

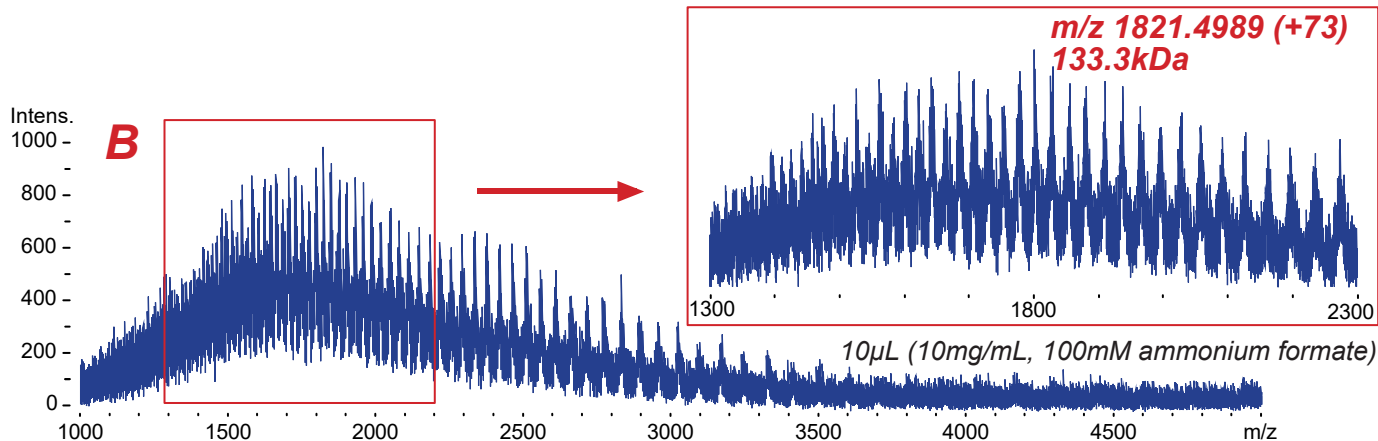
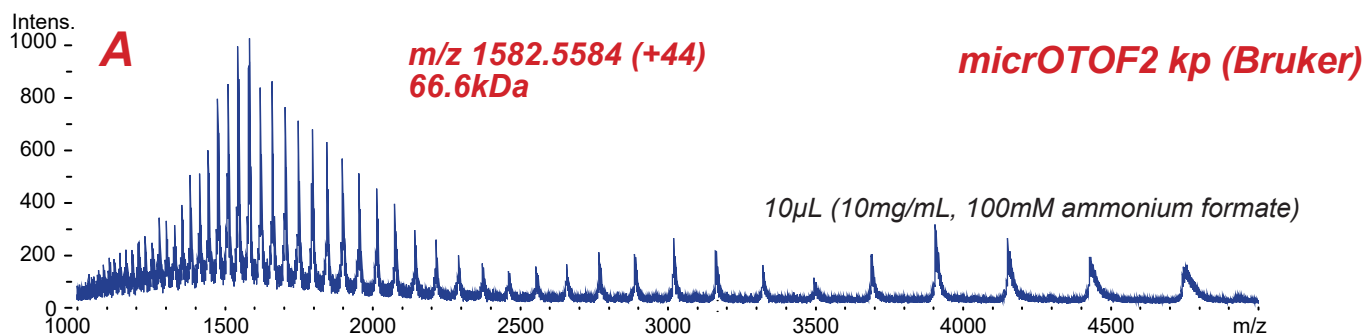
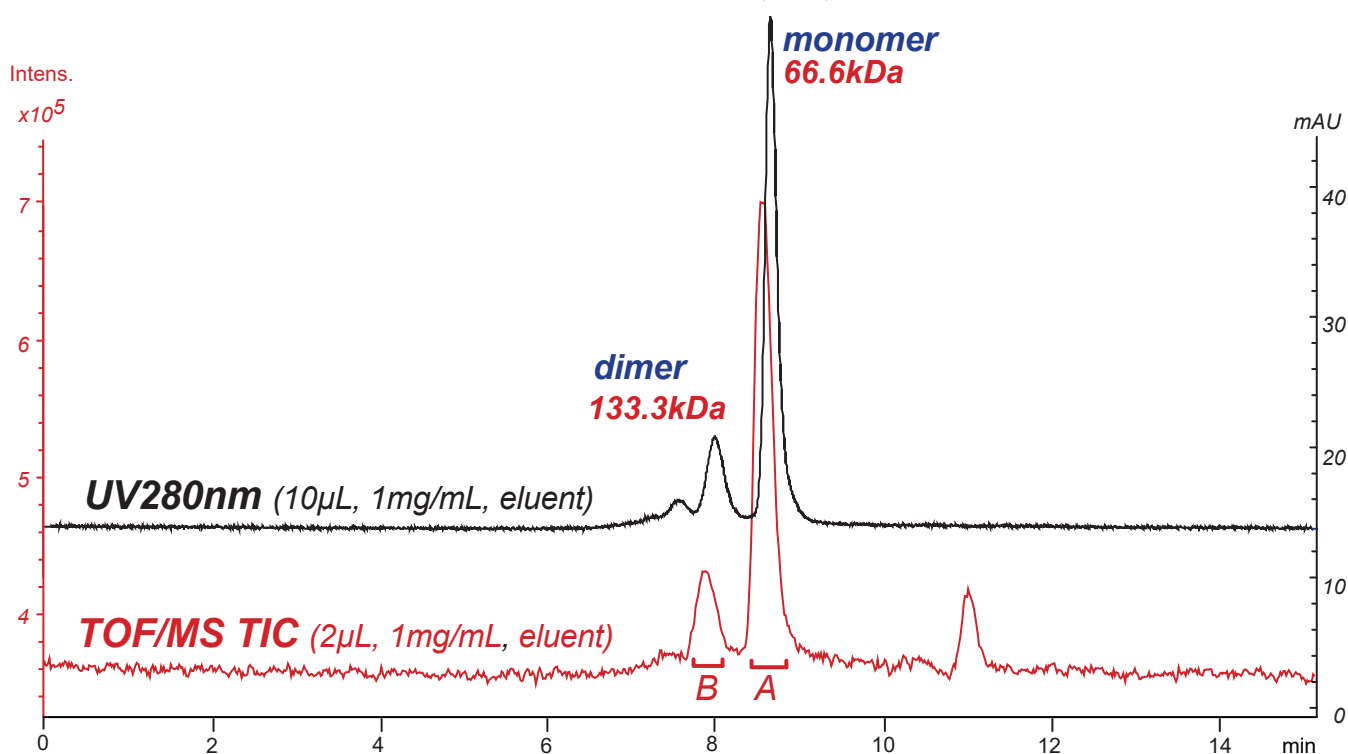
Intrada SEC

250 x 4.6 mm

HPLC COLUMN APPLICATION

SEC-MS: Bovine serum albumin (BSA)

ウシ血清アルブミン (BSA)の SEC-MS分析



Intrada SEC, 250 x 4.6 mm
100mM ammonium formate
0.3mL/min (6MPa), 37 $^{\circ}$ C