

**Unison UK-C18**

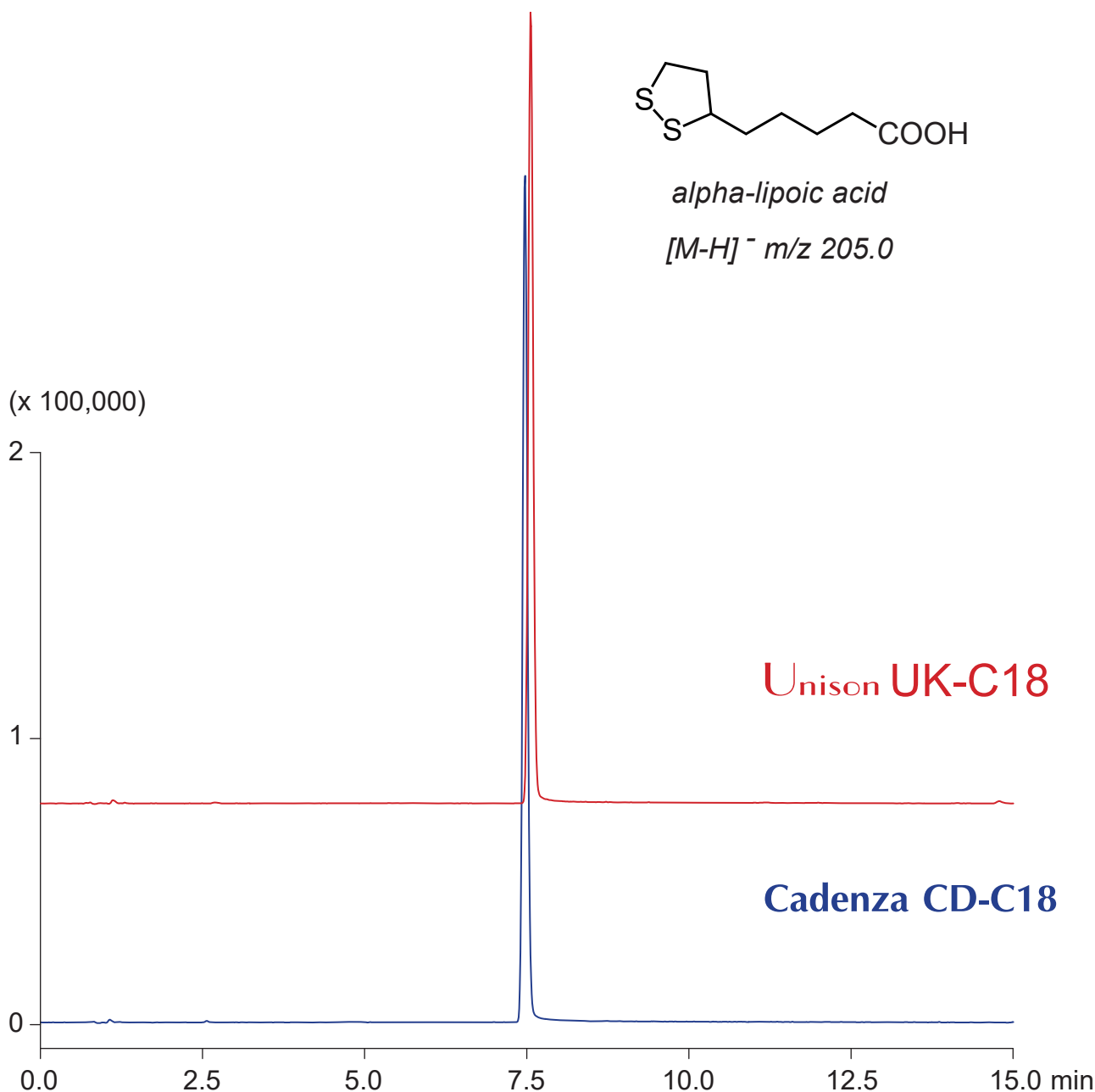
**Cadenza CD-C18**

100 x 3 mm

**HPLC COLUMN APPLICATION**

LC-MS: Alpha-lipoic acid (Cofactor for mitochondrial enzymes)

-リポ酸 (ミトコンドリア酵素補因子) の LC-MS 分析



100 x 3 mm

A: water / acetonitrile / acetic acid = 90 / 10 / 0.1

B: water / acetonitrile / acetic acid = 10 / 90 / 0.1

0-100%B (0-15min)

0.4mL/min (7MPa), 37°C, Single Quad. MS (ESI)

5µL (5µg/mL, ethanol / water / acetic acid = 15 / 85 / 1)