

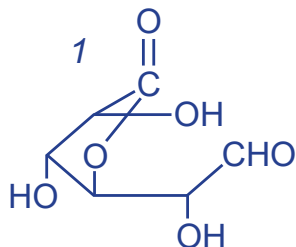
**Intrada** Organic Acid

150 x 2 mm

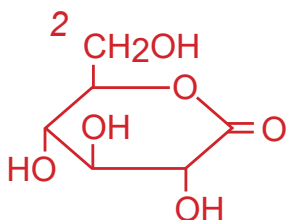
**HPLC COLUMN APPLICATION**

**LC-MS: Gluconic acid, glucuronic acid and lactones**

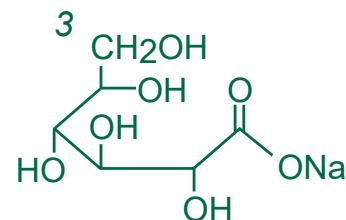
グルコン酸, グルクロン酸及びラクトン類の LC-MS 分析



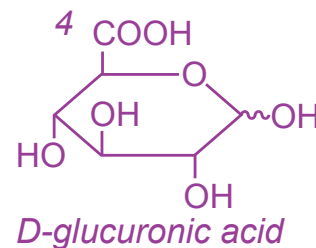
*D-glucono-6,3-lactone*  
(*D-glucuronic acid lactone*)



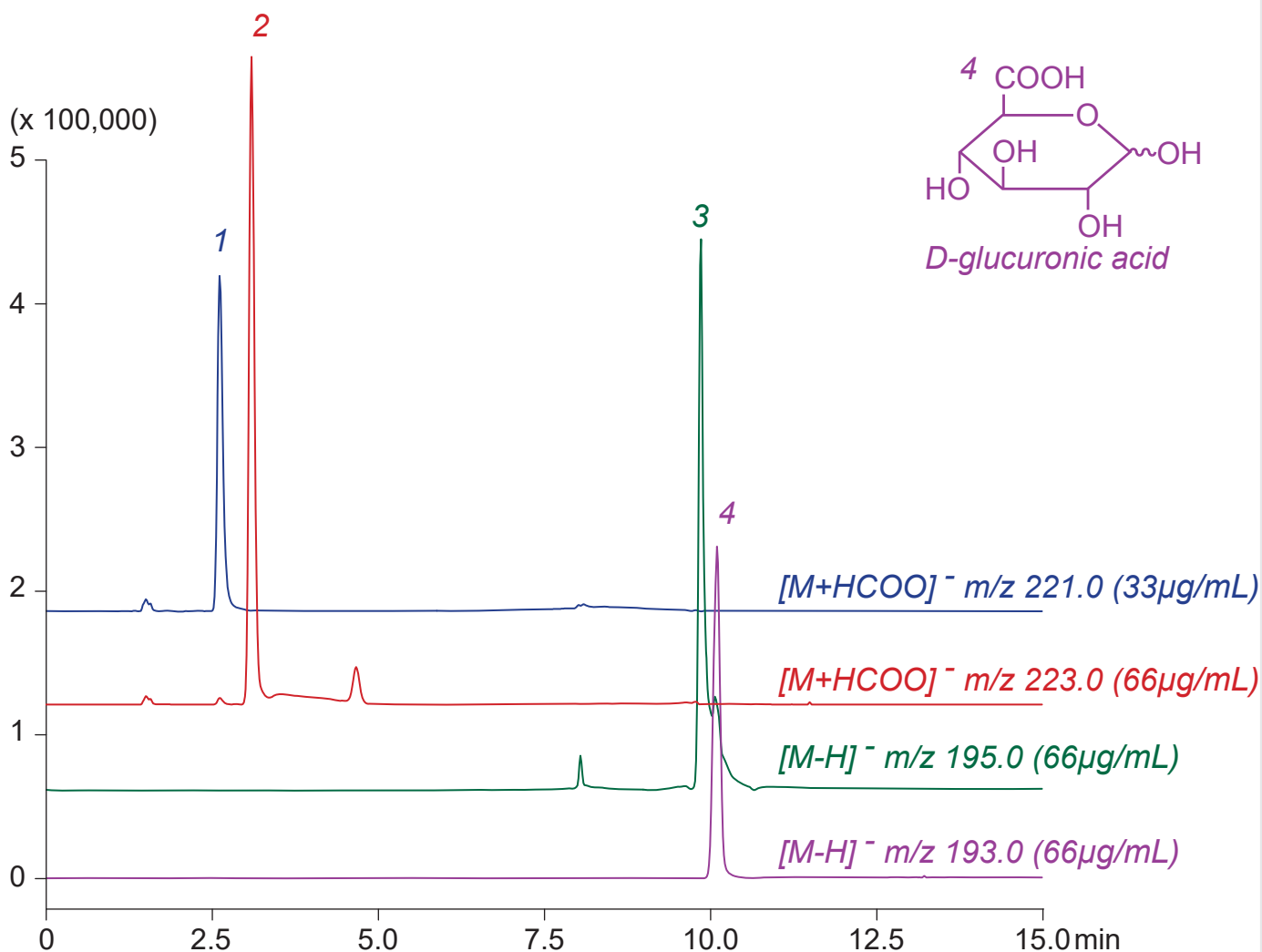
*D-glucono-1,5-lactone*  
(*D-gluconic acid delta lactone*)



*sodium gluconate*



*D-glucuronic acid*



*Intrada Organic Acid, 150 x 2 mm*

*A: acetonitrile / 100mM ammonium formate = 90 / 10*

*B: acetonitrile / water / formic acid = 60 / 40 / 0.5*

*0%B (0-1min), 0-100%B (1-8min), 100%B (8-15min)*

*0.2mL/min (6MPa), 37°C, Single Quad. MS (ESI)*

*2µL (33-66µg/mL, ACN / water / HCOOH = 70 / 25 / 0.1)*