

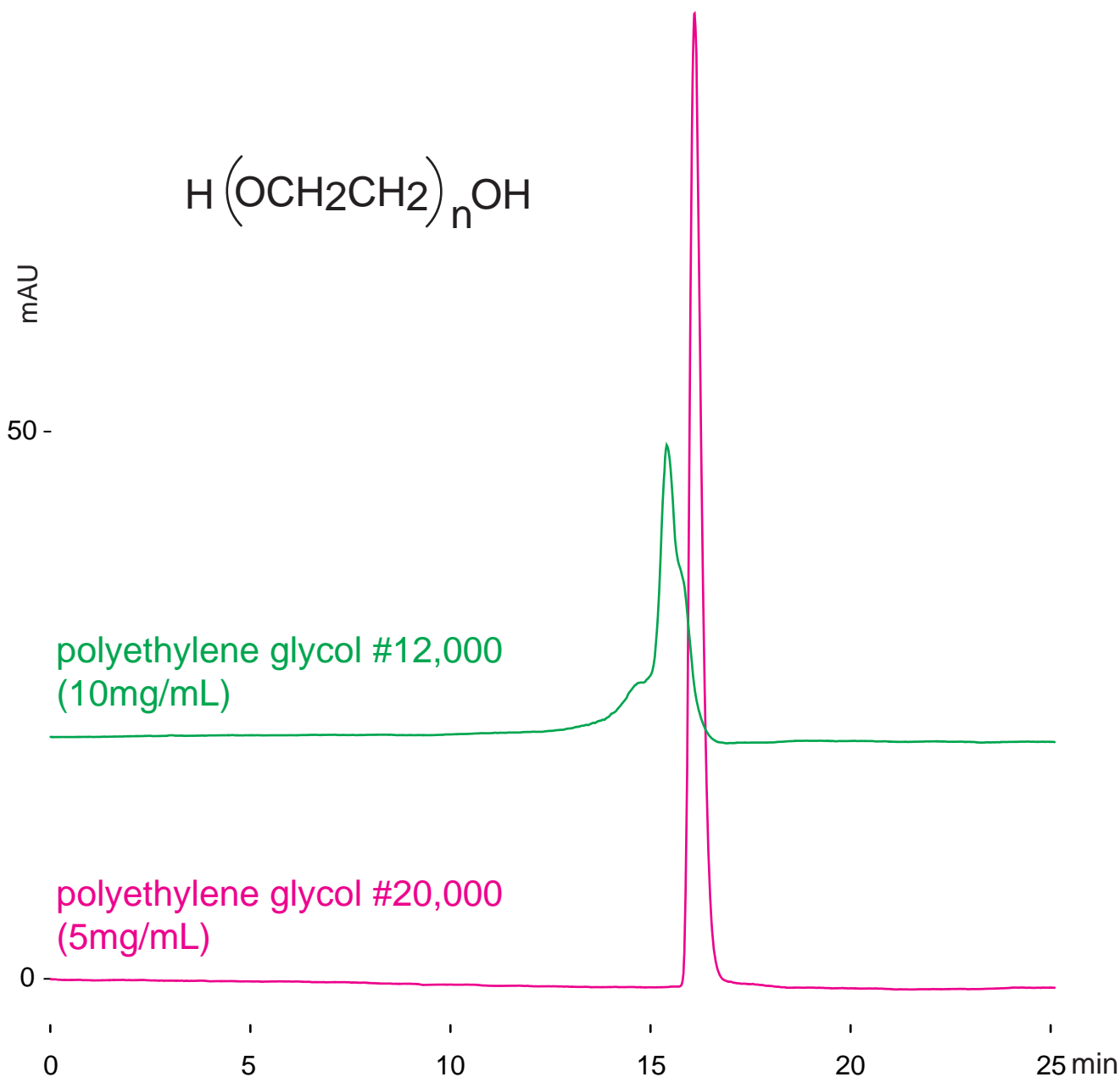
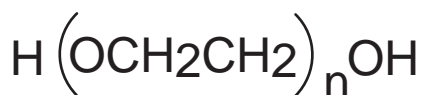
Cadenza CW-C18

250 x 4.6 mm

HPLC COLUMN APPLICATION

Polyethylene glycol (PEG)

ポリエチレングリコール



Cadenza CW-C18, 250 x 4.6 mm

A: water / formic acid = 100 / 0.1

B: acetonitrile / formic acid = 100 / 0.1

30-60%B (0-25min)

0.3mL/min (18MPa), 37°C

ELSD (spray chamber 50°C, drift chamber 100°C)

10µL (5-10mg/mL, water/acetonitrile=50/50)