

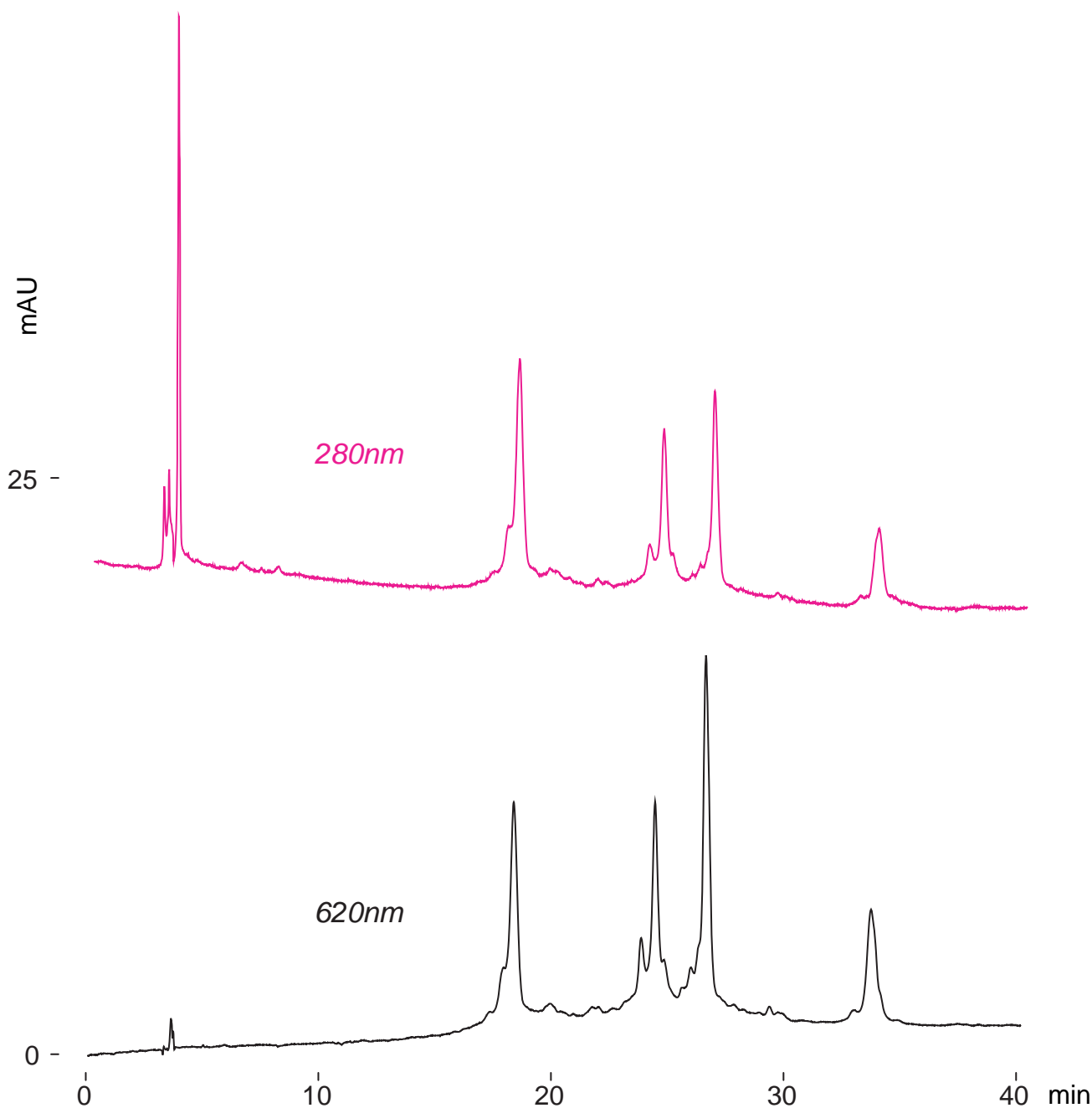
Intrada WP-RP

250 x 4.6 mm

HPLC COLUMN APPLICATION

Phycocyanin from Spirulina

フィコシアニン (スピルリナ由来)



Intrada WP-RP, 250 x 4.6 mm

A: water / trifluoroacetic acid = 100 / 0.1

B: acetonitrile / trifluoroacetic acid = 100 / 0.07

35-45%B (0-40min)

1.0mL/min (18MPa), 37°C

20µL (5mg/mL, water / trifluoroacetic acid = 100 / 0.1)