

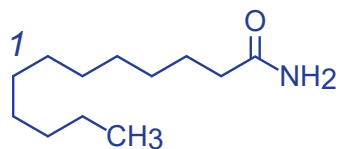
Unison UK-C1

150 x 3 mm

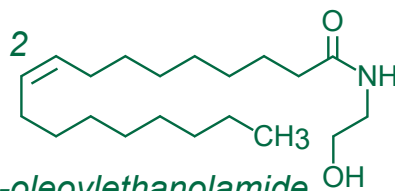
HPLC COLUMN APPLICATION

LC-MS: Fatty acid amides

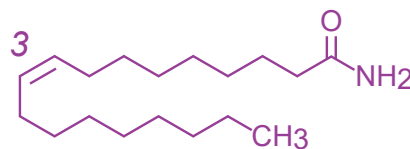
脂肪酸アミド類の LC-MS 分析



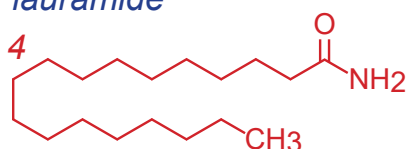
lauramide



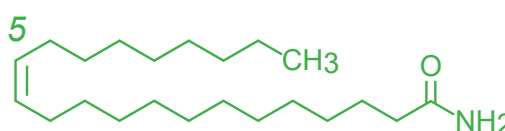
N-oleoylethanolamide



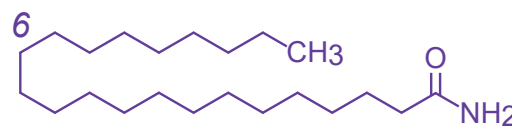
oleamide



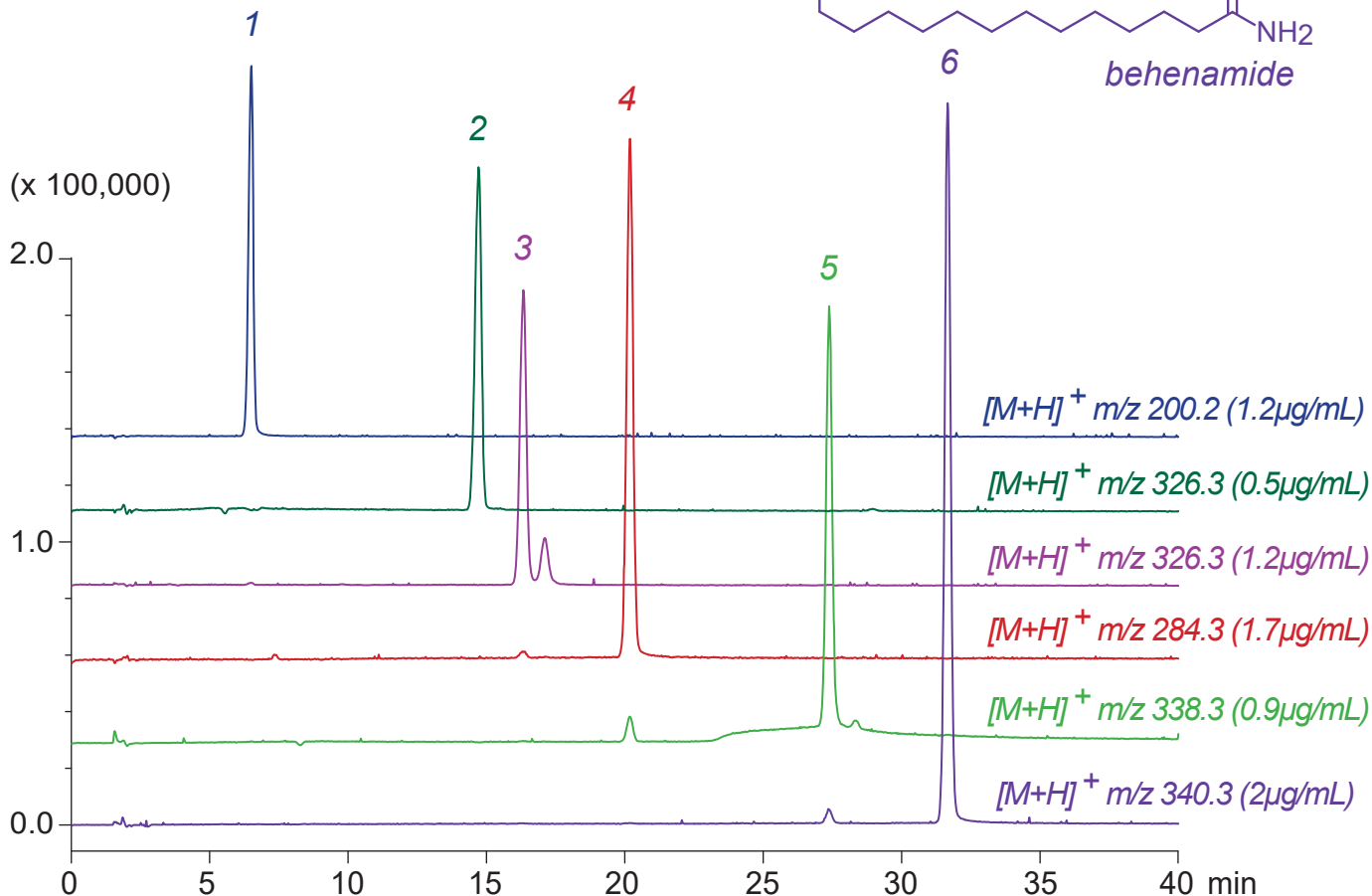
stearamide



erucamide



behenamide



Unison UK-C1, 150 x 3 mm

A: methanol / water / acetic acid = 40 / 60 / 0.5

B: methanol / acetic acid = 100 / 0.5

30-60%B (0-40min)

0.4mL/min (10MPa), 60°C, Single Quad. MS (ESI)

5µL (0.5-2µg/mL, methanol / acetic acid = 100 / 1)