

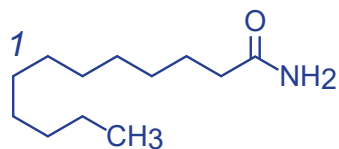
Unison UK-C8

150 x 3 mm

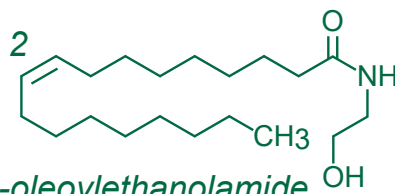
HPLC COLUMN APPLICATION

LC-MS: Fatty acid amides

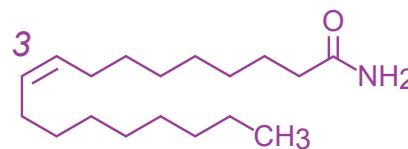
脂肪酸アミド類の LC-MS 分析



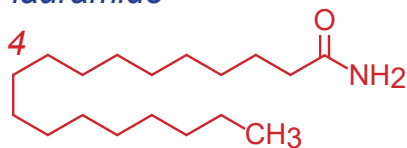
*lauramide*



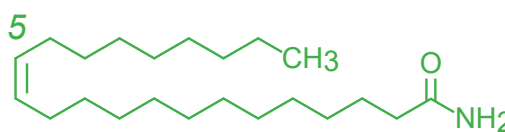
*N-oleoylethanolamide*



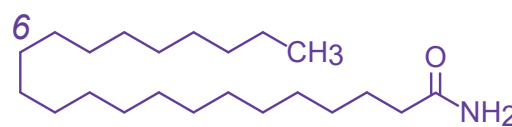
*oleamide*



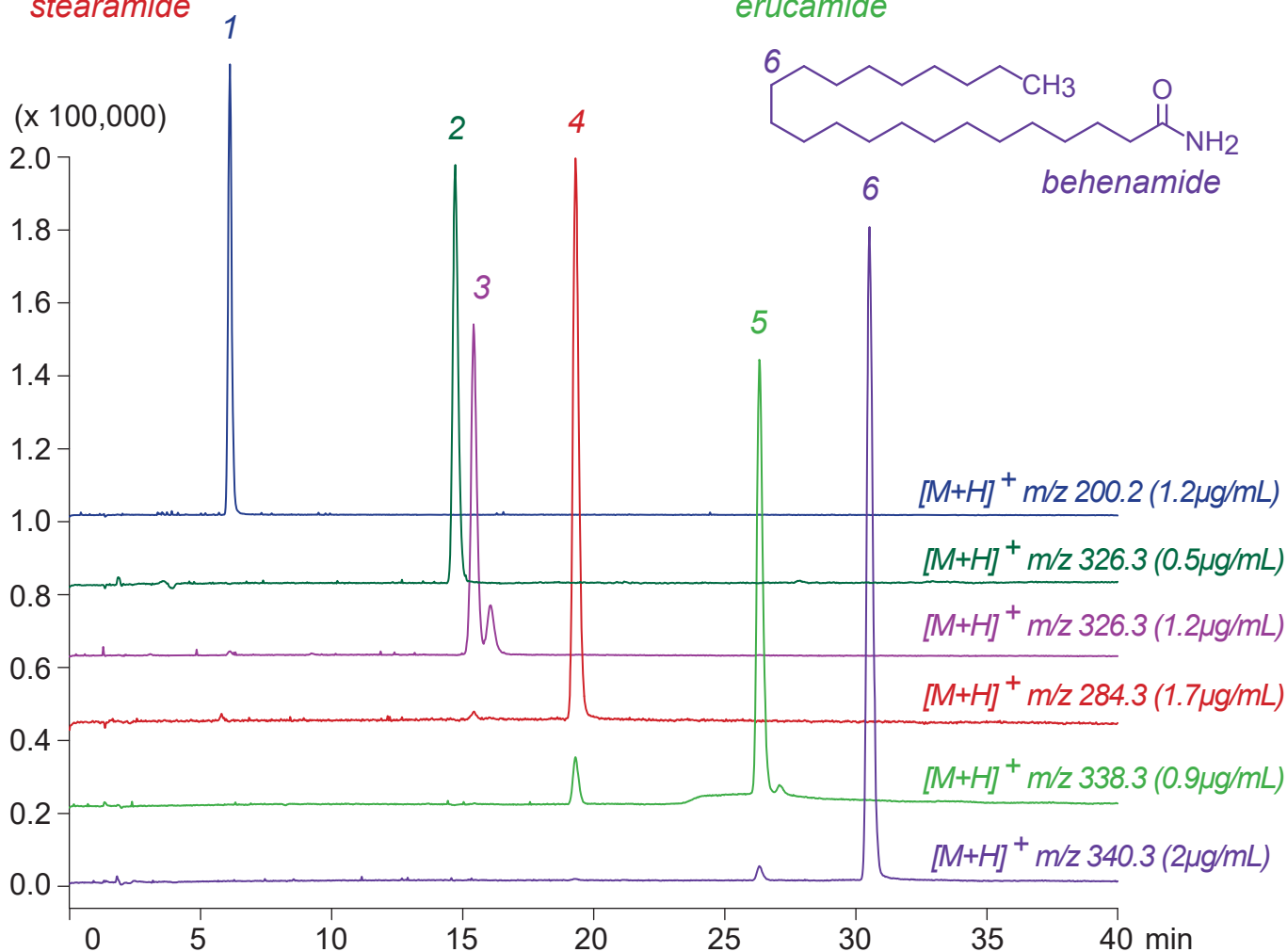
*stearamide*



*erucamide*



*behenamide*



Unison UK-C8, 150 x 3 mm

A: methanol / water / acetic acid = 40 / 60 / 0.5

B: methanol / acetic acid = 100 / 0.5

50-80%B (0-40min)

0.4mL/min (9MPa), 60°C, Single Quad. MS (ESI)

5µL (0.5-2µg/mL, methanol / acetic acid = 100 / 1)