

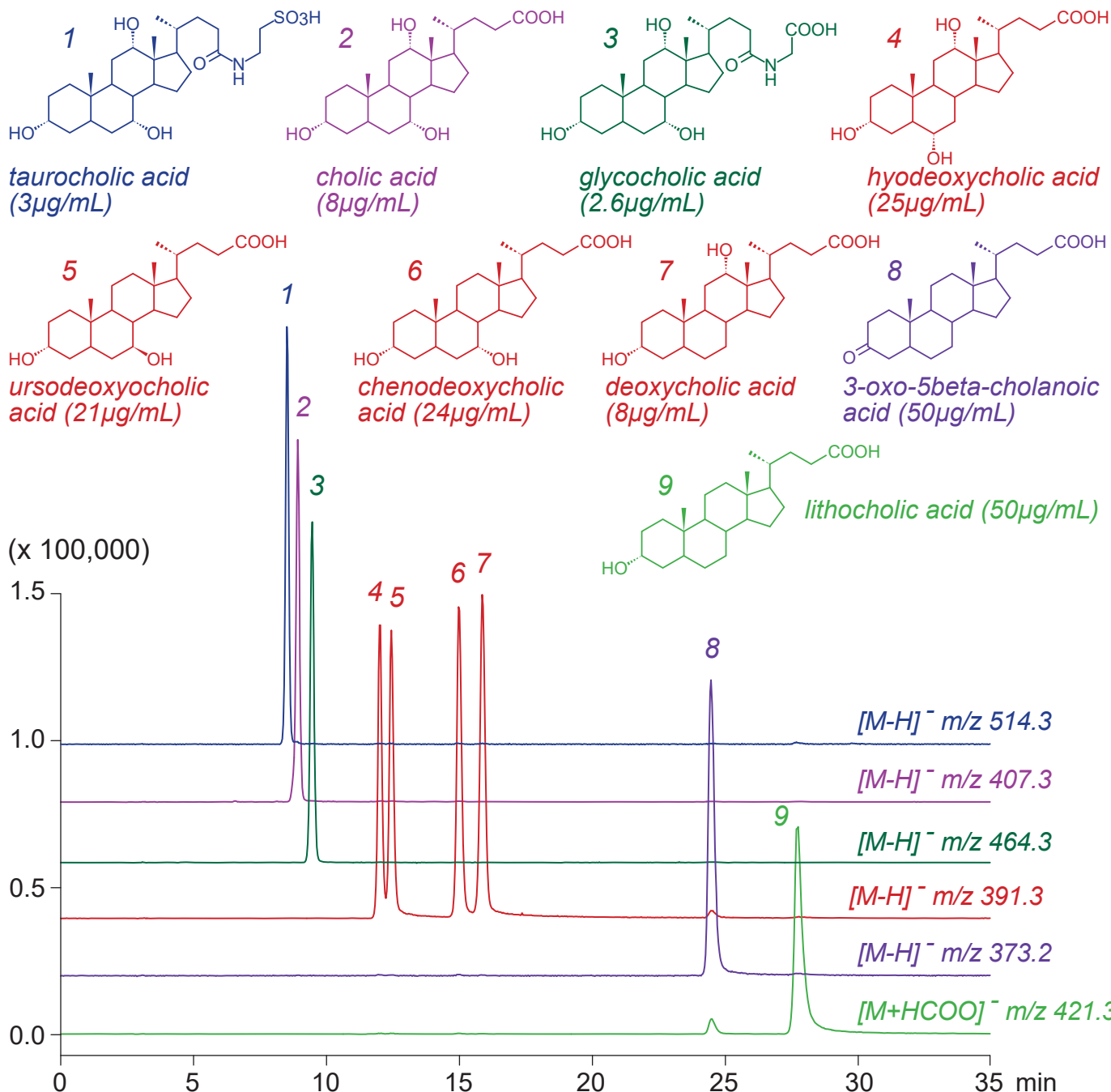
**Intrada Organic Acid**

250 x 2 mm

**HPLC COLUMN APPLICATION**

**LC-MS: Cholane derivatives (Cholanic acids)**

コラン誘導体 (コラン酸) の LC-MS 分析



*Intrada Organic Acid, 250 x 2 mm*

*A: acetonitrile / water / formic acid = 20 / 80 / 0.1*

*B: acetonitrile / 100mM ammonium formate = 50 / 50*

*40-65%B (0-35min)*

*0.2mL/min (16MPa), 37°C, Single Quad. MS (ESI)*

*5µL (2.6-50µg/mL, MeOH / water / HCOOH = 50 / 50 / 0.1)*