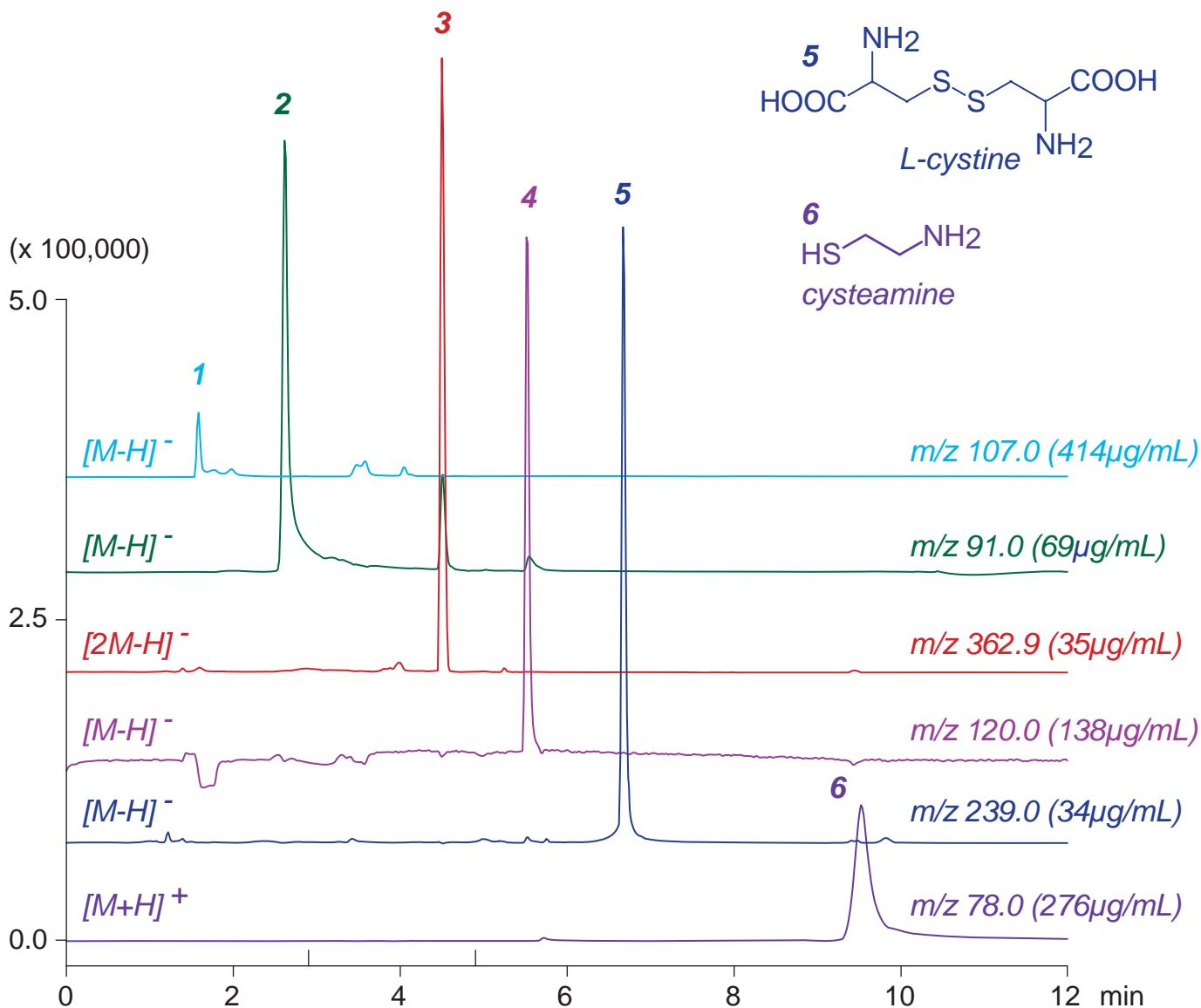
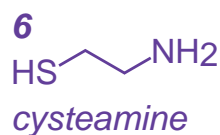
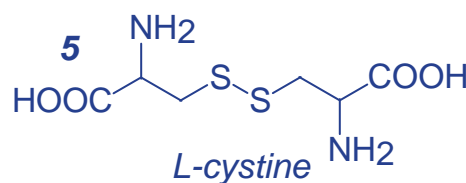
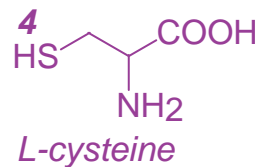
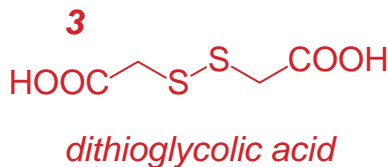
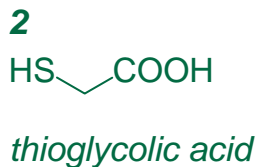
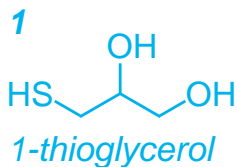


Intrada Amino Acid 100 x 3 mm **HPLC COLUMN APPLICATION**

LC-MS: Components in permanent wave lotion (2)

パーマ液成分の LC-MS 分析 (2)



Intrada Amino Acid, 100 x 3 mm
 A: acetonitrile / acetic acid = 100 / 0.5
 B: acetonitrile / 100mM ammonium acetate = 20 / 80
 0-100%B (0-8min), 100%B (8-12min)
 0.5mL/min (3MPa), 37°C, Single Quad. MS (ESI)
 5µL (34-414µg/mL, ACN / water / AcOH = 50 / 50 / 5)