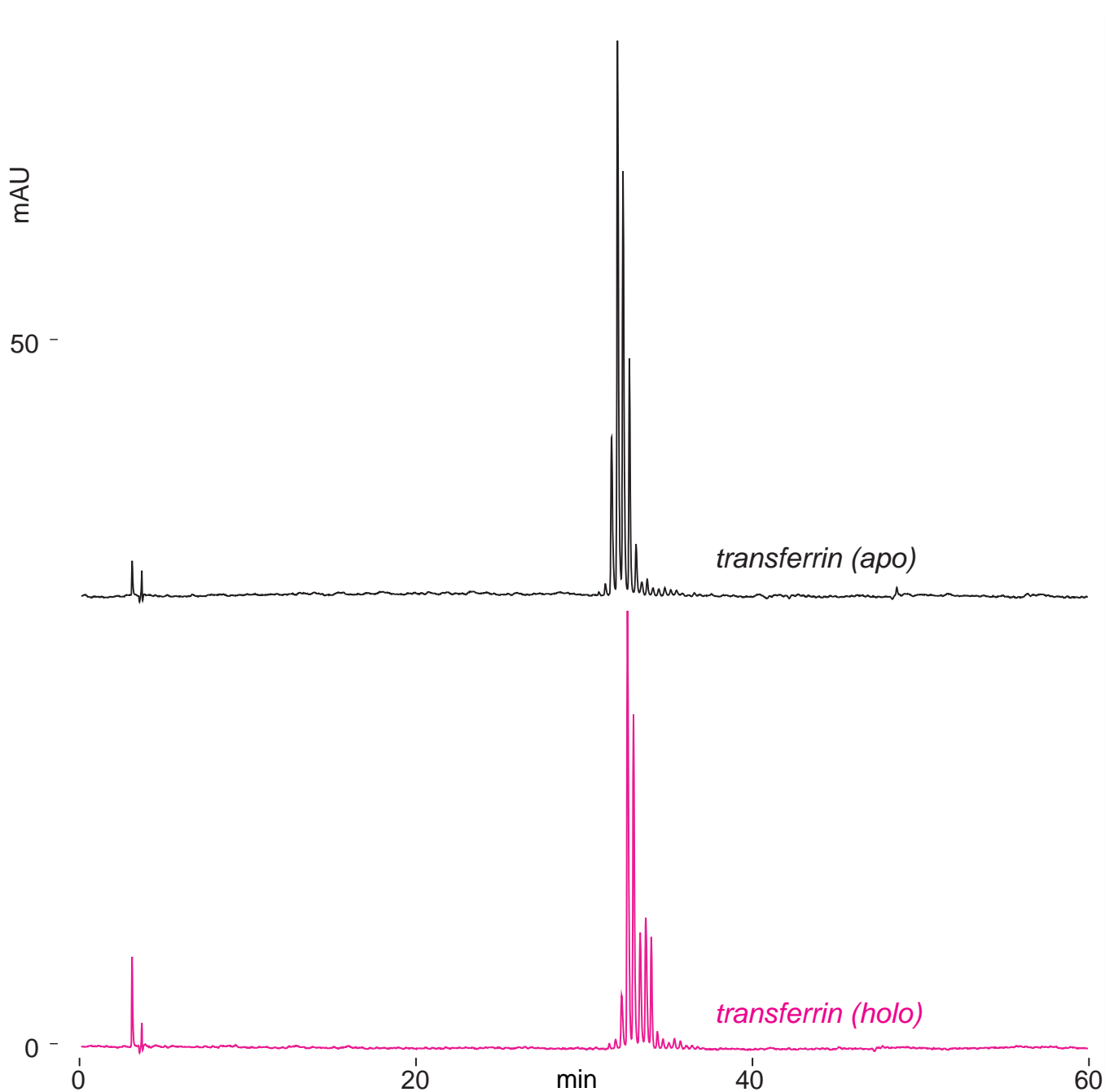


**Intrada WP-RP**

250 x 4.6 mm

**HPLC COLUMN APPLICATION**

**Transferrin**  
トランスフェリン



*Intrada WP-RP, 250 x 4.6 mm*

*A: water / acetonitrile / trifluoroacetic acid = 90 / 10 / 0.1*

*B: water / acetonitrile / trifluoroacetic acid = 10 / 90 / 0.1*

*20-35%B (0-60min)*

*1mL/min, 37°C, 280nm*

*10µL (1mg/mL, water / trifluoroacetic acid = 100 / 0.1)*