

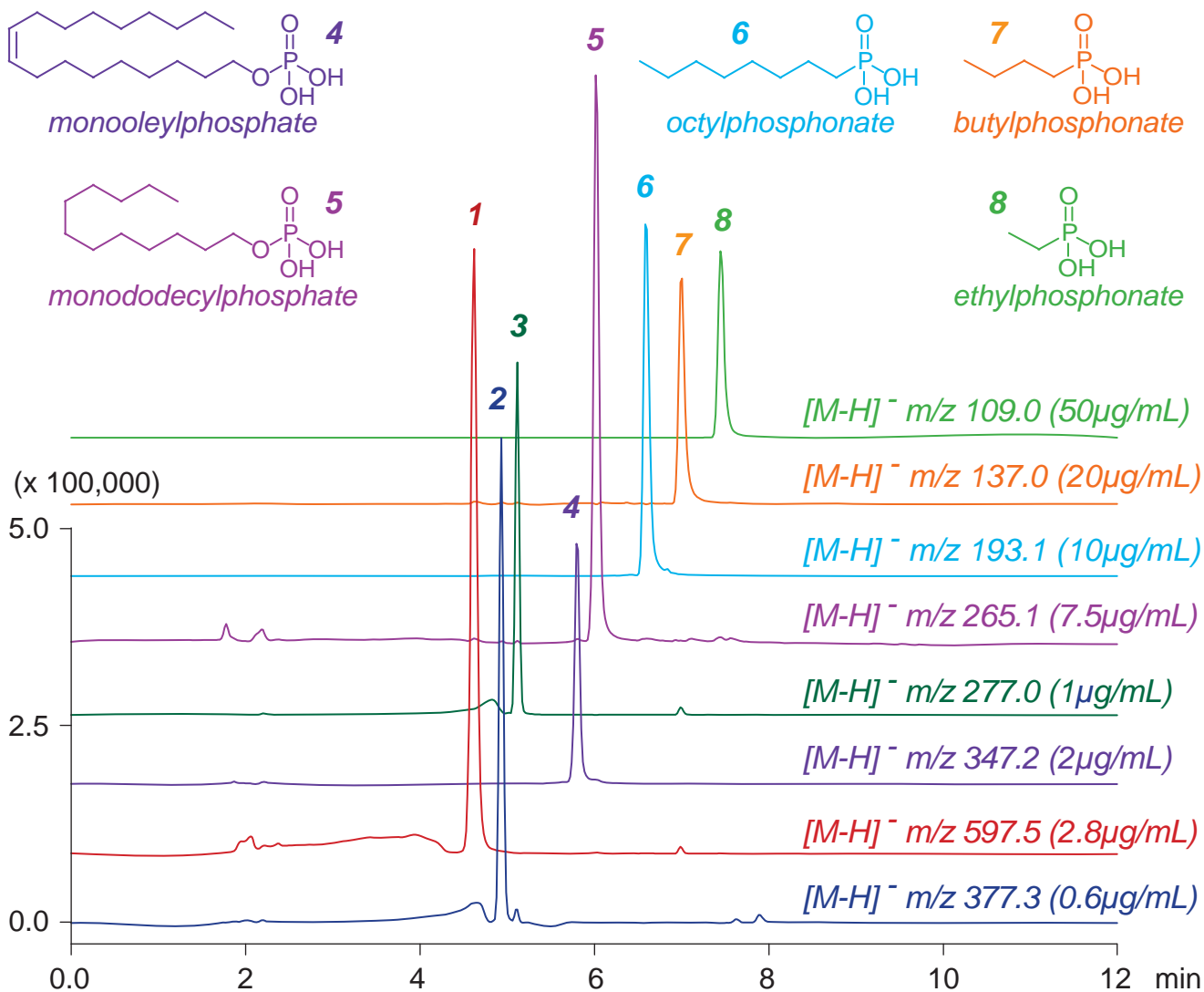
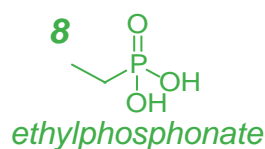
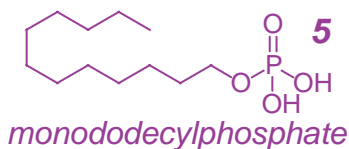
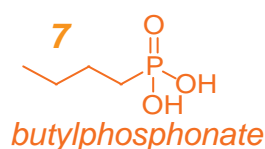
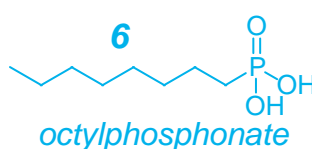
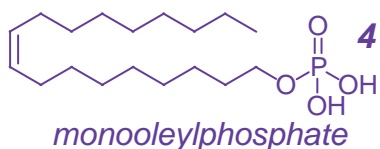
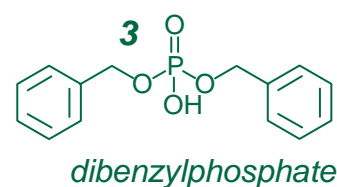
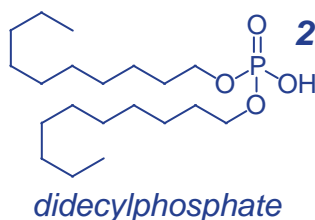
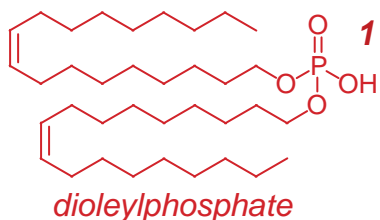
**Intrada Organic Acid**

150 x 2 mm

**HPLC COLUMN APPLICATION**

**LC-MS: Alkylphosphates and alkylphosphonates**

アルキルリン酸エステル及びアルキルホスホン酸の LC-MS 分析



*Intrada Organic Acid, 150 x 2 mm*

*A: acetonitrile / water / acetic acid = 95 / 5 / 0.5*

*B: acetonitrile / 100mM ammonium acetate = 40 / 60*

*0-100%B (0-8min), 100%B (8-12min)*

*0.2mL/min (5MPa), 37°C, Single Quad. MS (ESI)*

*5  $\mu\text{L}$  (0.6-50  $\mu\text{g/mL}$ , methanol / acetic acid = 100 / 1)*