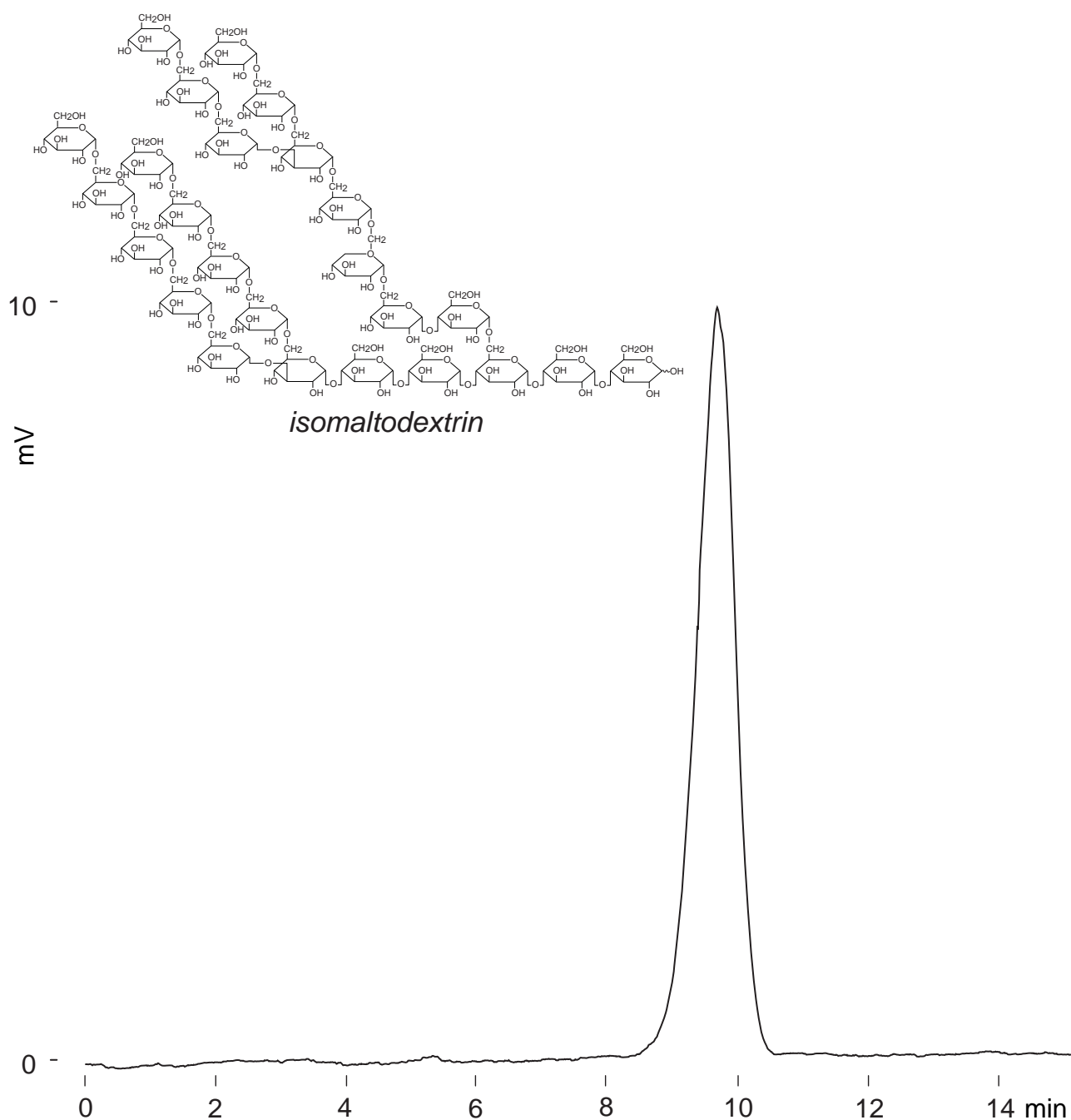


Intrada SEC

250 x 4.6 mm

HPLC COLUMN APPLICATION

Isomaltodextrin
イソマルトデキストリン



Intrada SEC, 250 x 4.6 mm
100mM ammonium formate
0.3mL/min (6MPa), 37°C
ELSD (spray chamber 30°C, drift chamber 60°C)
2µL (5mg/mL, 100mM ammonium formate)