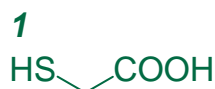


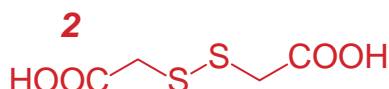
Intrada Amino Acid 100 x 3 mm **HPLC COLUMN APPLICATION**

LC-MS: Components in permanent wave lotion

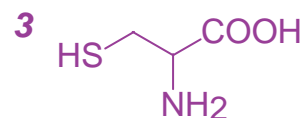
パーマ液成分の LC-MS 分析



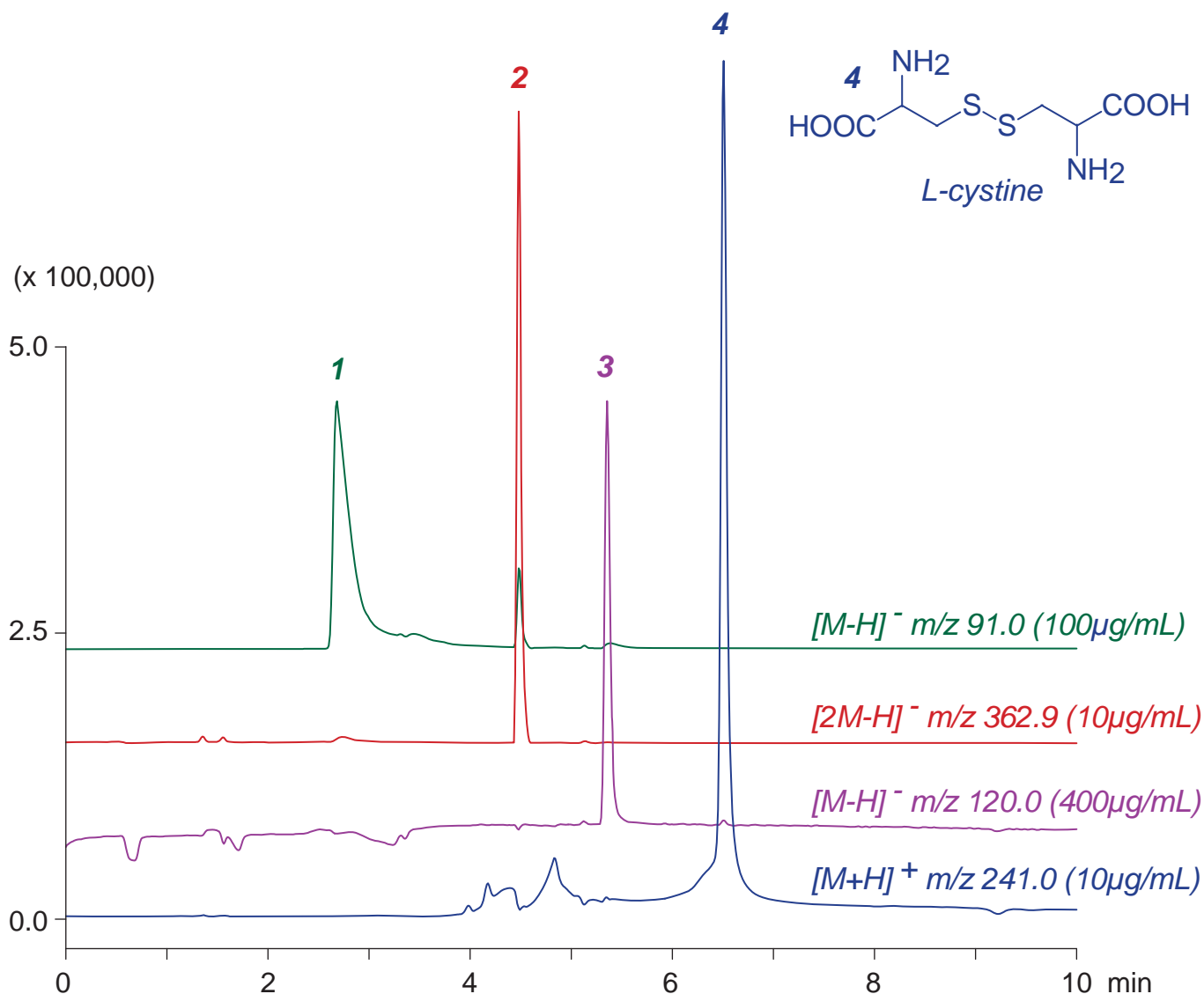
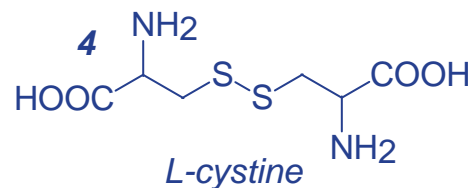
thioglycolic acid



dithioglycolic acid



L-cysteine



Intrada Amino Acid, 100 x 3 mm

A: acetonitrile / acetic acid = 100 / 0.5

B: acetonitrile / 100mM ammonium acetate = 20 / 80

0-100%B (0-8min), 100%B (8-10min)

0.5mL/min (4MPa), 37°C, Single Quad. MS (ESI)

5µL (10-400µg/mL, ACN / water / AcOH = 50 / 50 / 5)