

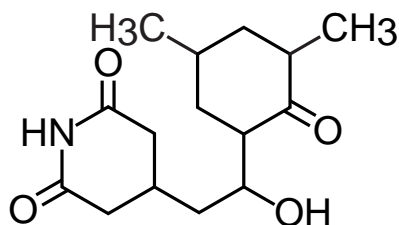
Cadenza CW-C18

100 x 3 mm

HPLC COLUMN APPLICATION

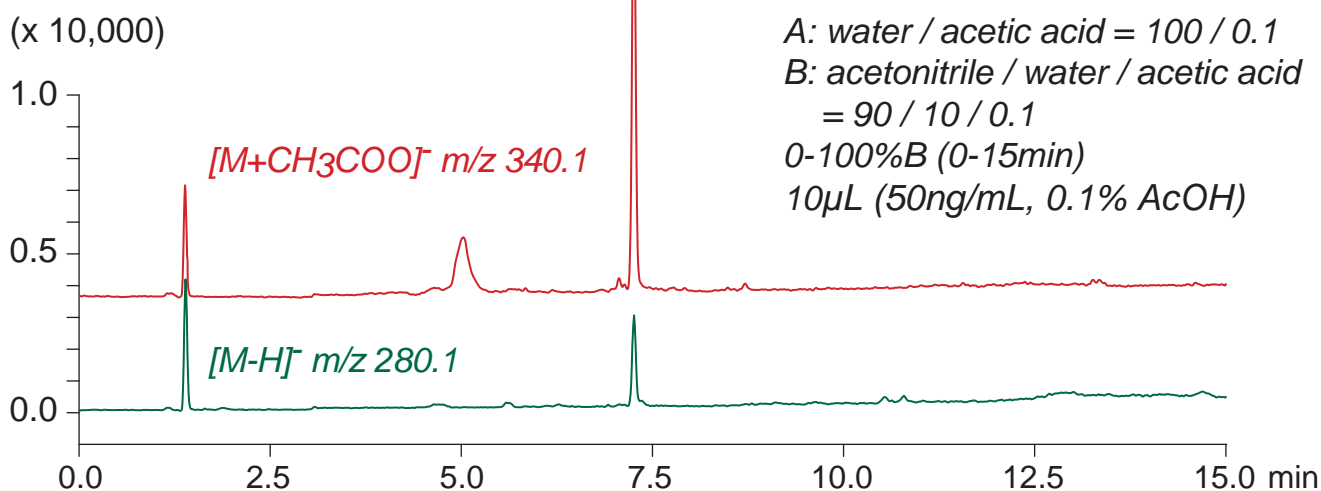
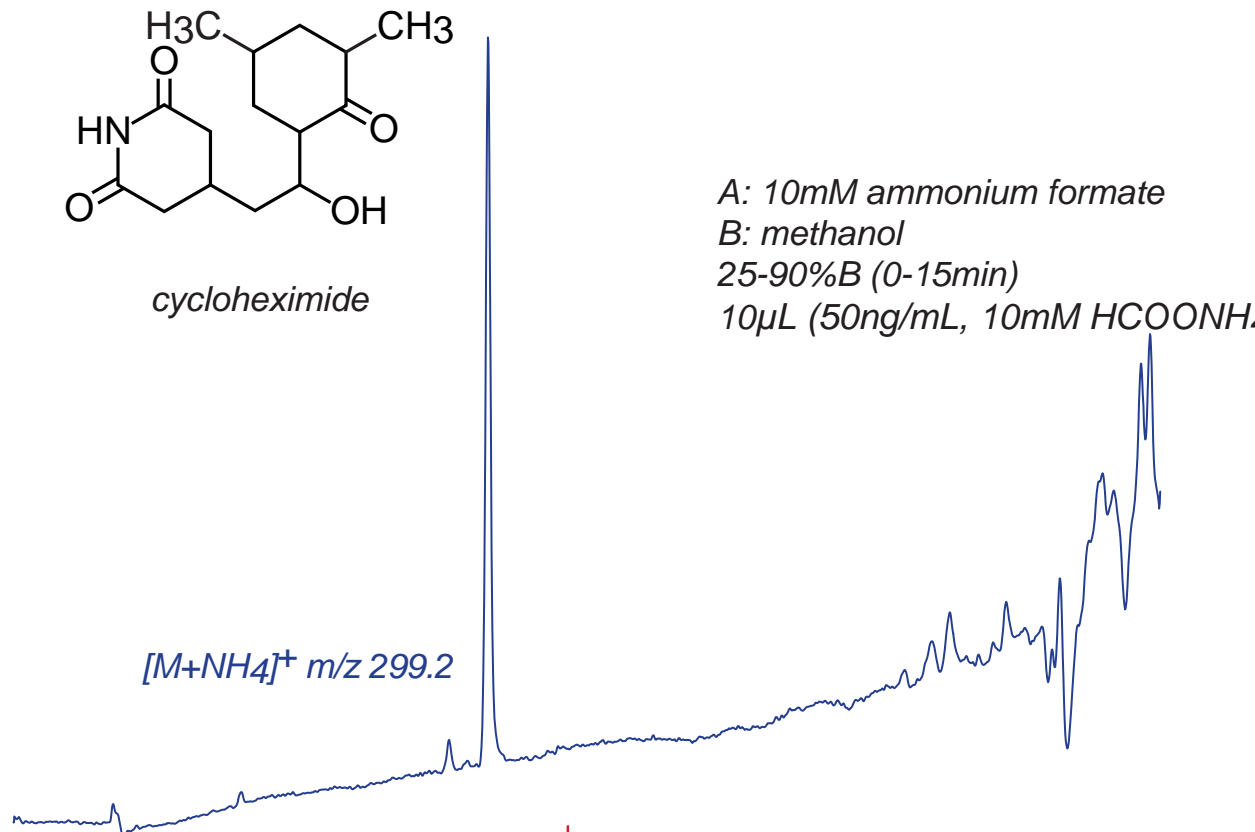
LC-MS: Cycloheximide (Glutarimide antibiotics)

シクロヘキシミド (グルタリイミド系抗生物質) の LC-MS 分析



cycloheximide

A: 10mM ammonium formate
 B: methanol
 25-90%B (0-15min)
 10µL (50ng/mL, 10mM HCOONH₄)



A: water / acetic acid = 100 / 0.1
 B: acetonitrile / water / acetic acid
 = 90 / 10 / 0.1
 0-100%B (0-15min)
 10µL (50ng/mL, 0.1% AcOH)

Cadenza CW-C18, 100 x 3 mm
 0.4mL/min (7-10MPa), 37°C, Single Quad. MS (ESI)