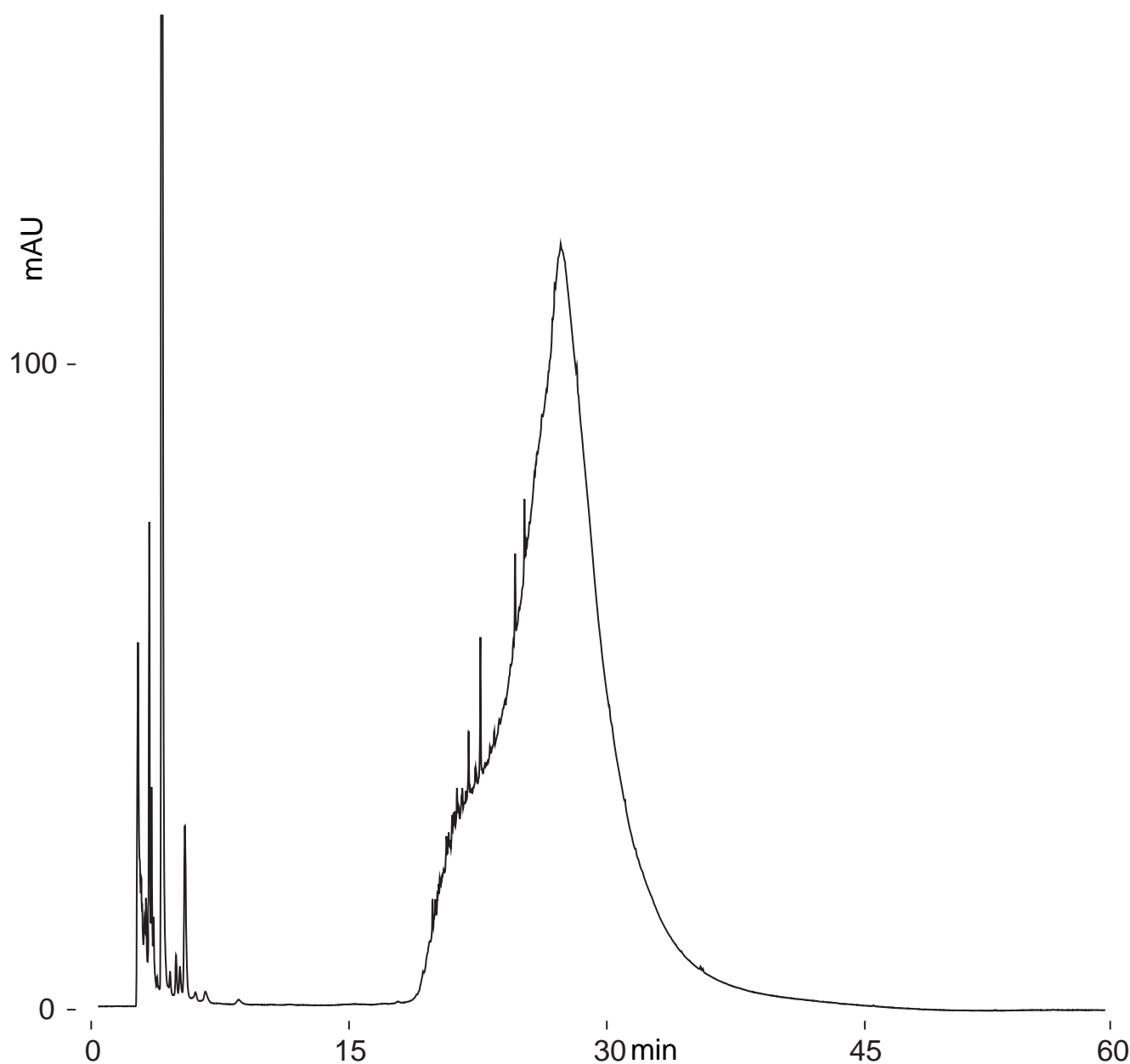


Presto FF-C18

150 x 4.6 mm

HPLC COLUMN APPLICATION

Lignin  
リグニン

Presto FF-C18, 150 x 4.6 mm

A: water / acetic acid = 100 / 0.1

B: water / acetonitrile / acetic acid = 10 / 90 / 0.1

0%B (0-5min), 0-100%B (5-50min), 100%B (50-60min)

0.4mL/min, 37°C, 280nm

10 $\mu$ L (5mg/mL, water / acetic acid = 100 / 1)