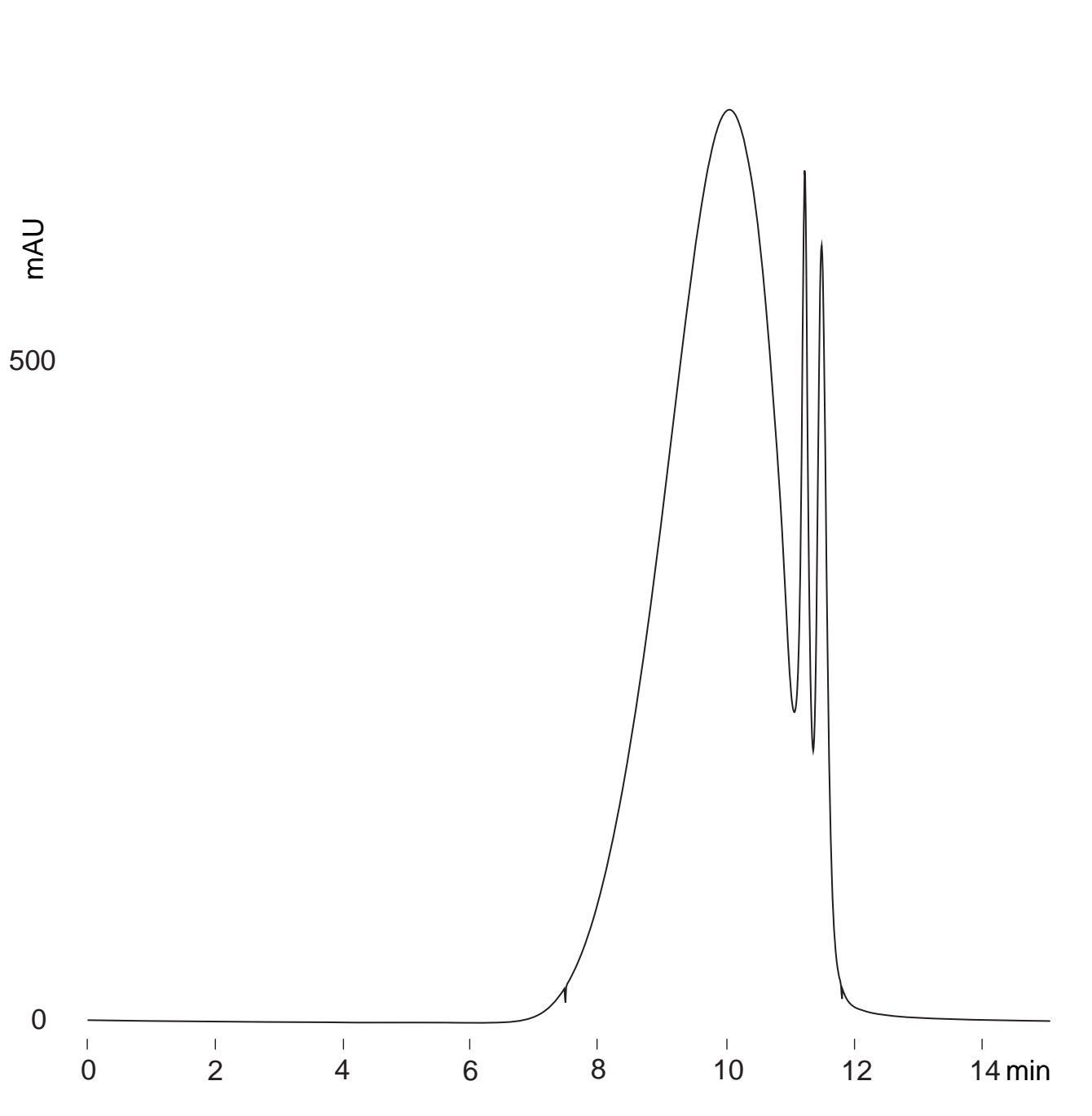


Intrada SEC

250 x 4.6 mm

HPLC COLUMN APPLICATION

Lignin
リグニン



*Intrada SEC, 250 x 4.6 mm
100mM HCOONH₄ / ACN = 70 / 30
0.3mL/min (6MPa), 37°C
280nm
10μL (5mg/mL, 100mM HCOONH₄)*