

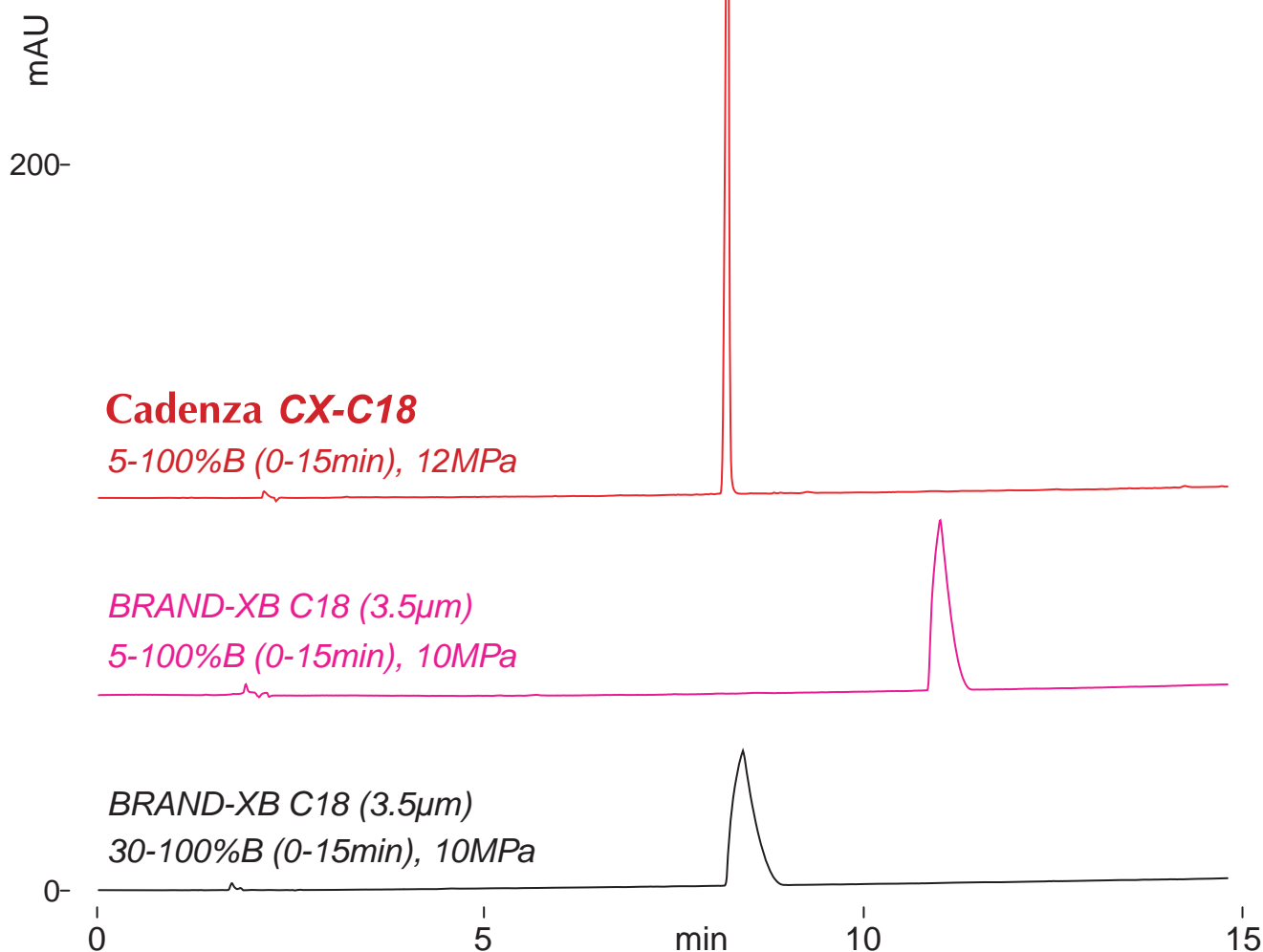
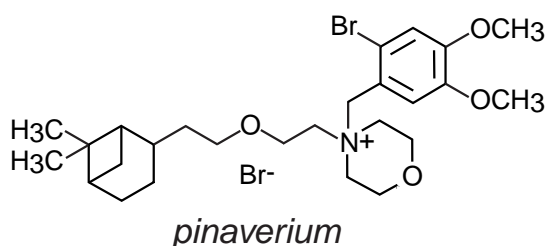
Cadenza **CX-C18**

150 x 3 mm

HPLC COLUMN APPLICATION

Pinaverium (Antispasmodic)

ピナベリウム (鎮痙薬)



150 x 3 mm

A: water / formic acid = 100 / 0.1

B: water / acetonitrile / formic acid = 10 / 90 / 0.1

0.4mL/min, 37°C, 250nm

2 μ L (1mg/mL, water / formic acid = 100 / 1)