

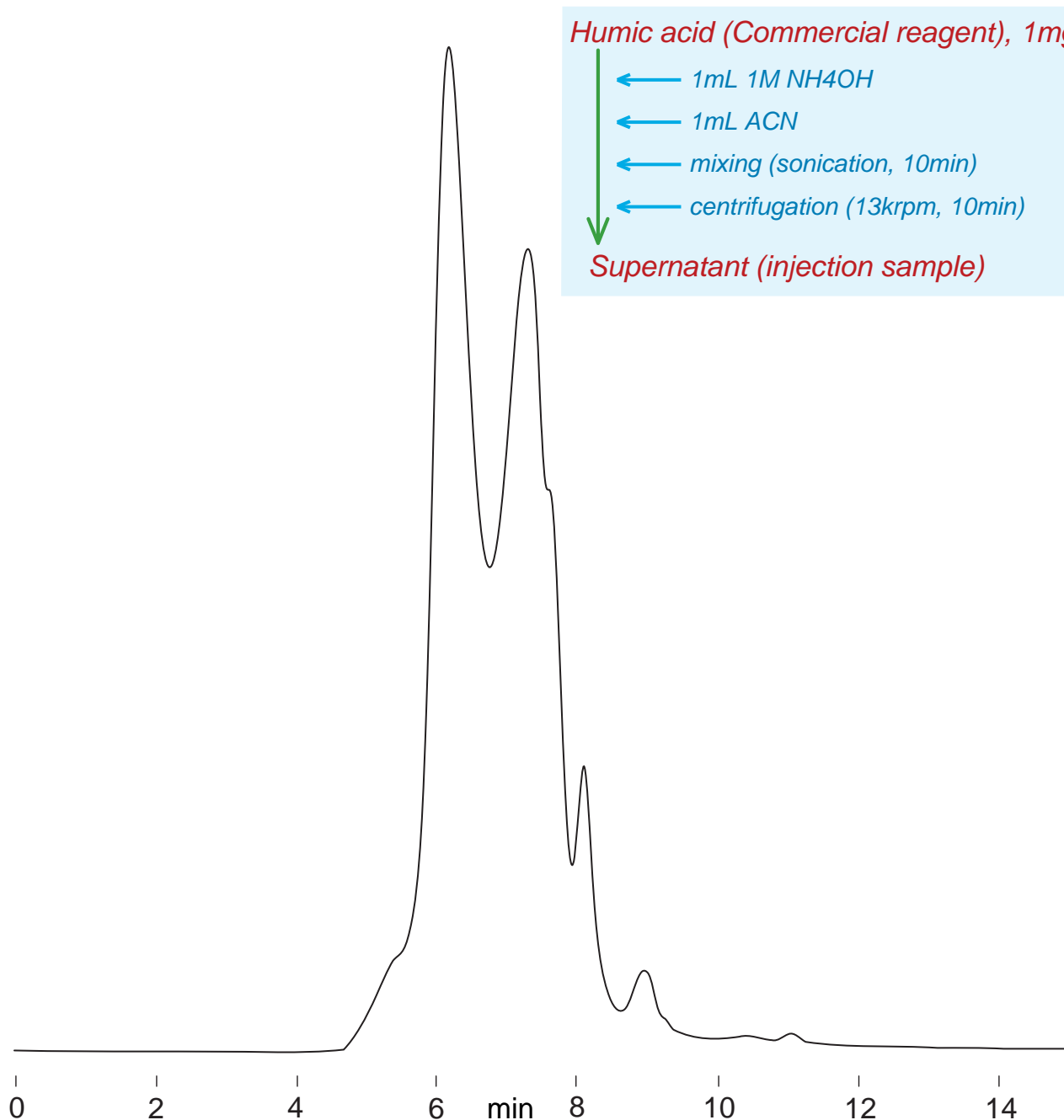
**Intrada SEC**

250 x 4.6 mm

**HPLC COLUMN APPLICATION**

**Humic acid**

フミン酸



*Intrada SEC, 250 x 4.6 mm*  
*10mM NH<sub>4</sub>OH / 10mM AcONH<sub>4</sub> / ACN = 10 / 40 / 50*  
*0.3mL/min (6MPa), 37°C, 260nm*  
*10µL (0.5mg/mL, 1M NH<sub>4</sub>OH / ACN = 50 / 50)*