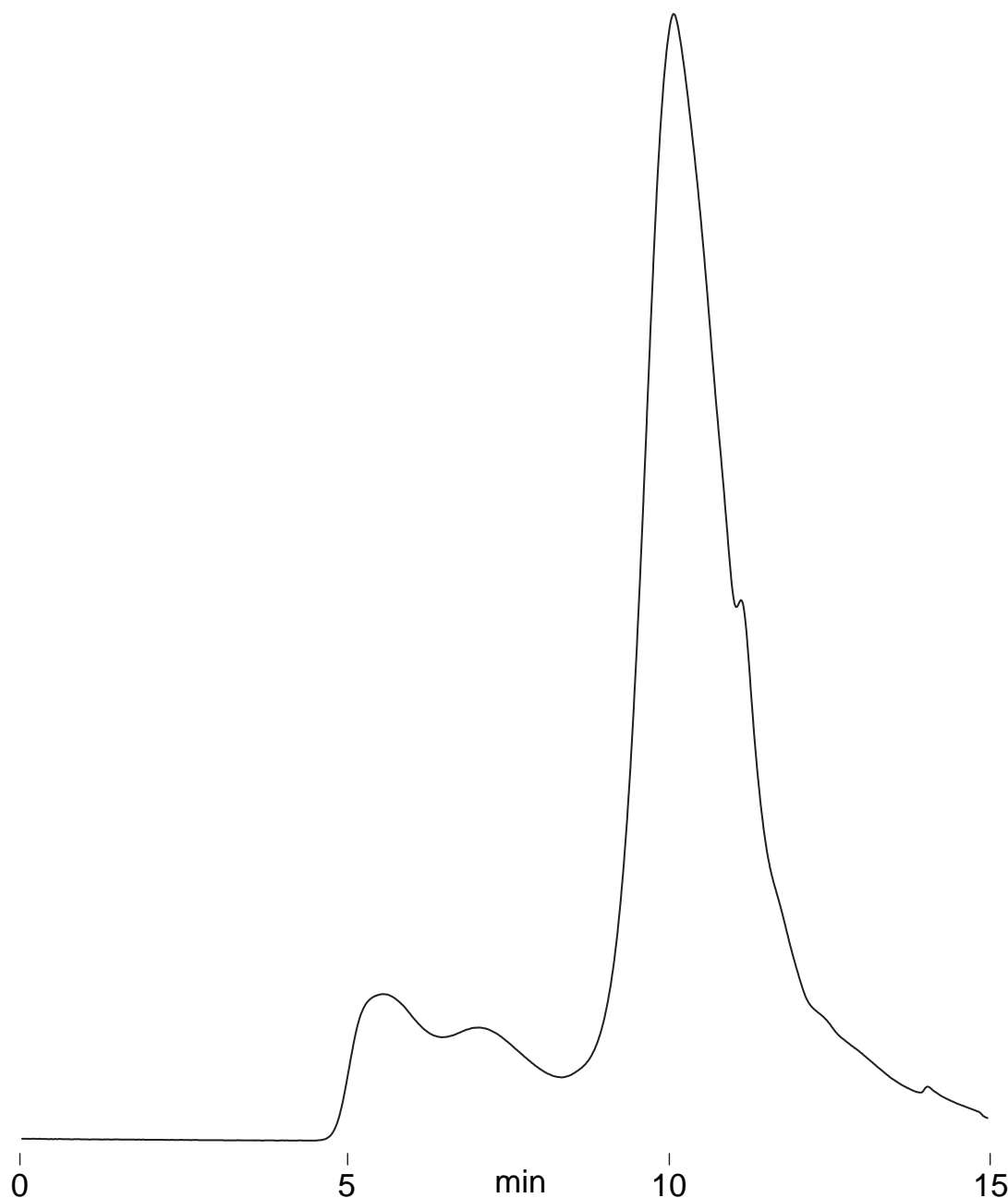


Intrada SEC

250 x 4.6 mm

HPLC COLUMN APPLICATION

Mucin
ムチン



*Intrada SEC, 250 x 4.6 mm
100mM ammonium formate
0.3mL/min (5MPa), 37°C
ELSD (spray chamber 30°C, drift tube 60°C)
20µL (20mg/mL, 3% ammonia water)*