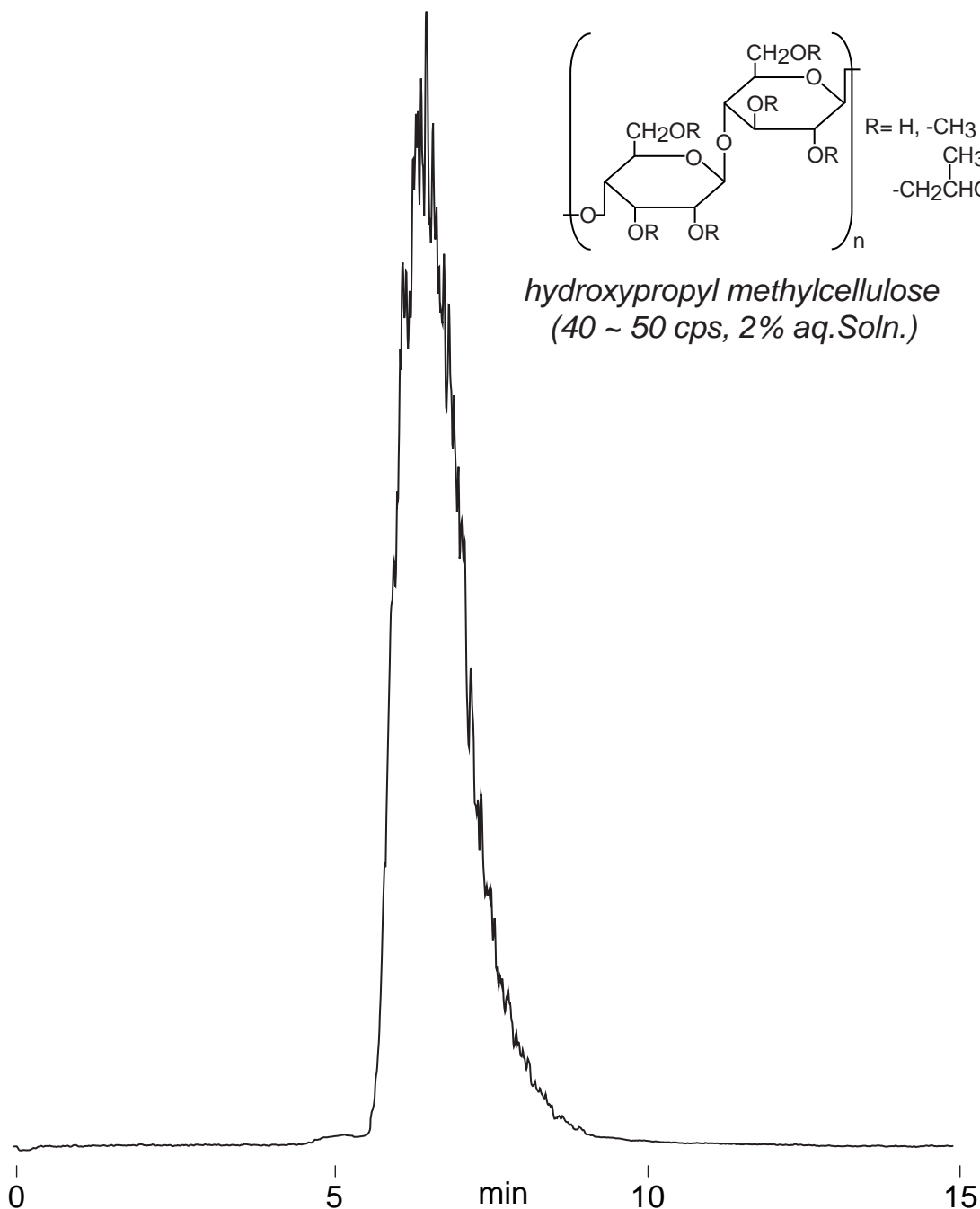


Intrada SEC

250 x 4.6 mm

HPLC COLUMN APPLICATION**Hydroxypropyl methylcellulose**

ヒドロキシプロピルメチルセルロース



Intrada SEC, 250 x 4.6 mm
100mM ammonium formate
0.3mL/min (5MPa), 37°C
ELSD (spray chamber 30°C, drift tube 60°C)
5µL (10mg/mL, 100mM ammonium formate)