

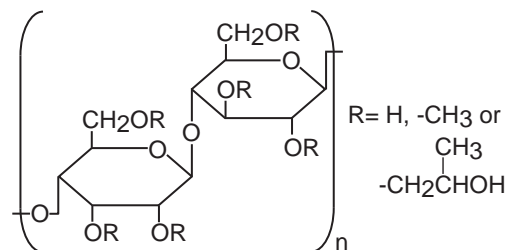
Intrada WP-RP

250 x 4.6 mm

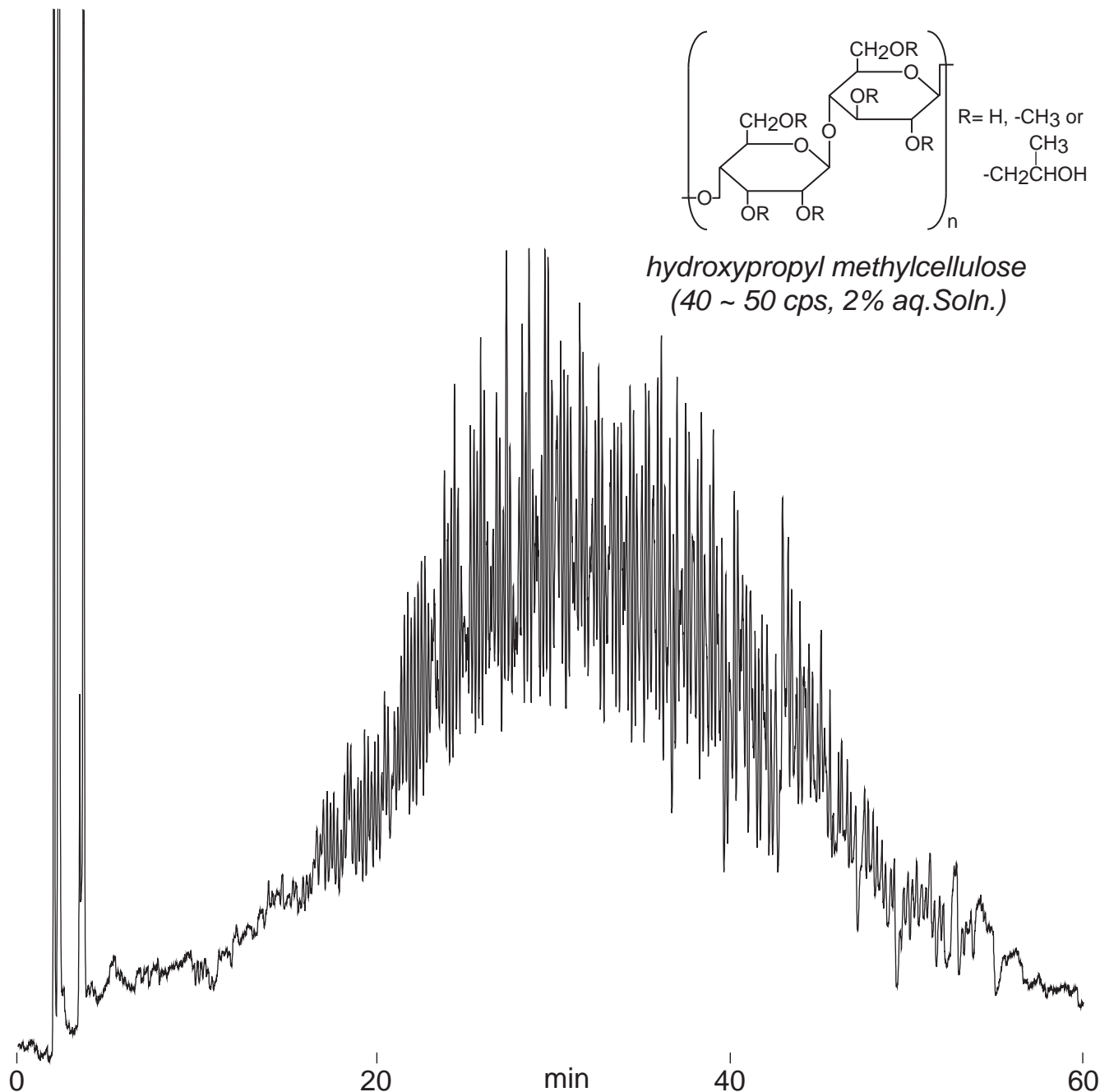
HPLC COLUMN APPLICATION

Hydroxypropyl methylcellulose

ヒドロキシプロピルメチルセルロース



hydroxypropyl methylcellulose
 (40 ~ 50 cps, 2% aq. Soln.)



Intrada WP-RP, 250 x 4.6 mm
A: water / formic acid = 100 / 0.1
B: water / acetonitrile / formic acid = 10 / 90 / 0.1
47-65%B (0-60min)
1.0mL/min (15 MPa), 37°C
ELSD (spray chamber 30°C, drift tube 60°C)
20µL (10mg/mL, water / formic acid = 100 / 1)