

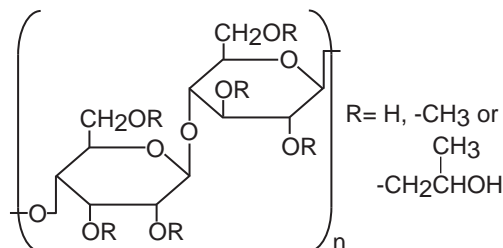
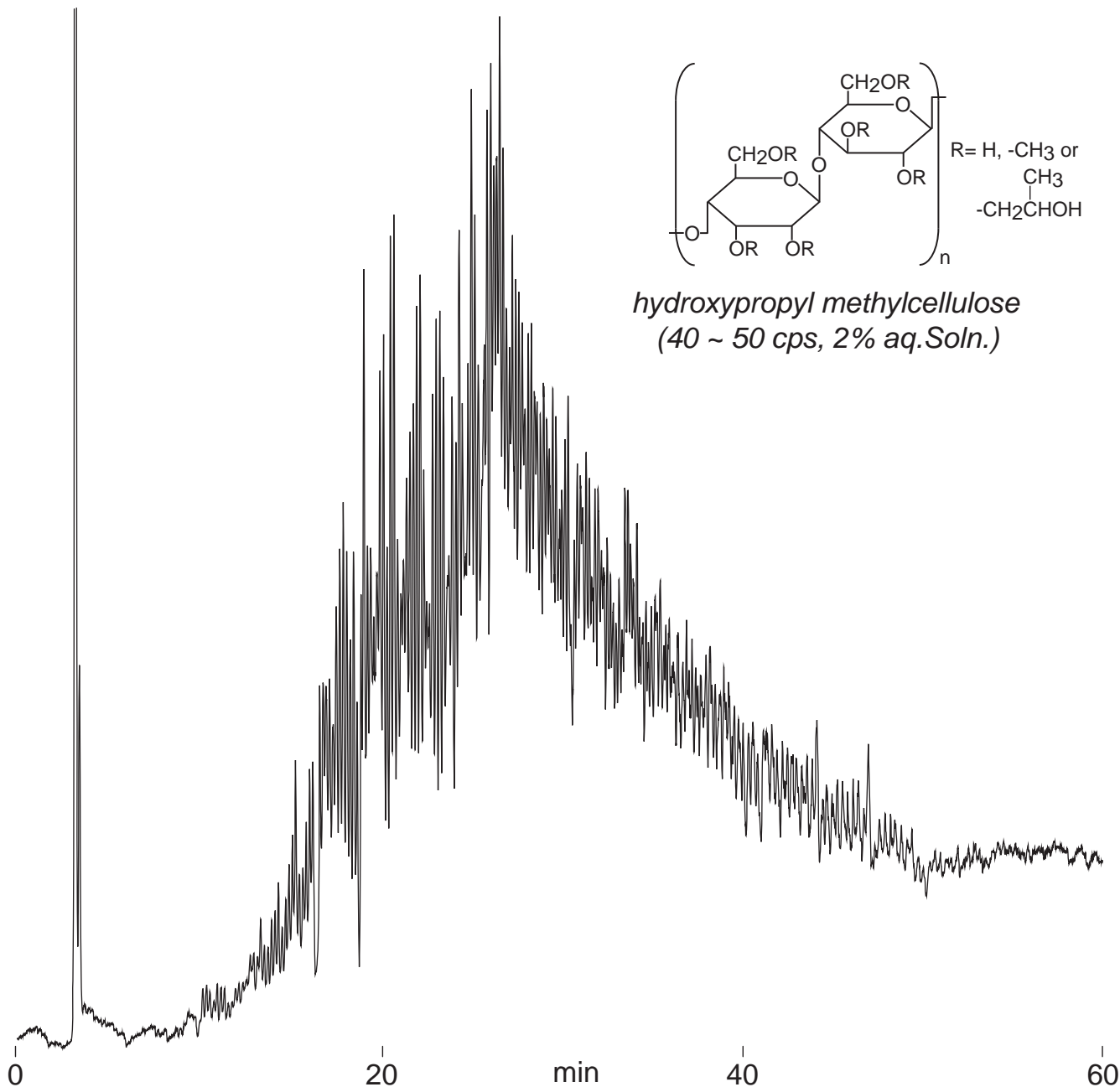
Cadenza CW-C18

250 x 4.6 mm

HPLC COLUMN APPLICATION

Hydroxypropyl methylcellulose

ヒドロキシプロピルメチルセルロース



hydroxypropyl methylcellulose
 (40 ~ 50 cps, 2% aq.Soln.)

Cadenza CW-C18, 250 x 4.6 mm

A: water / formic acid = 100 / 0.1

B: water / acetonitrile / formic acid = 10 / 90 / 0.1

45-75%B (0-60min)

1.0mL/min (18MPa), 37°C

ELSD (spray chamber 30°C, drift tube 60°C)

20µL (10mg/mL, water / formic acid = 100 / 1)