

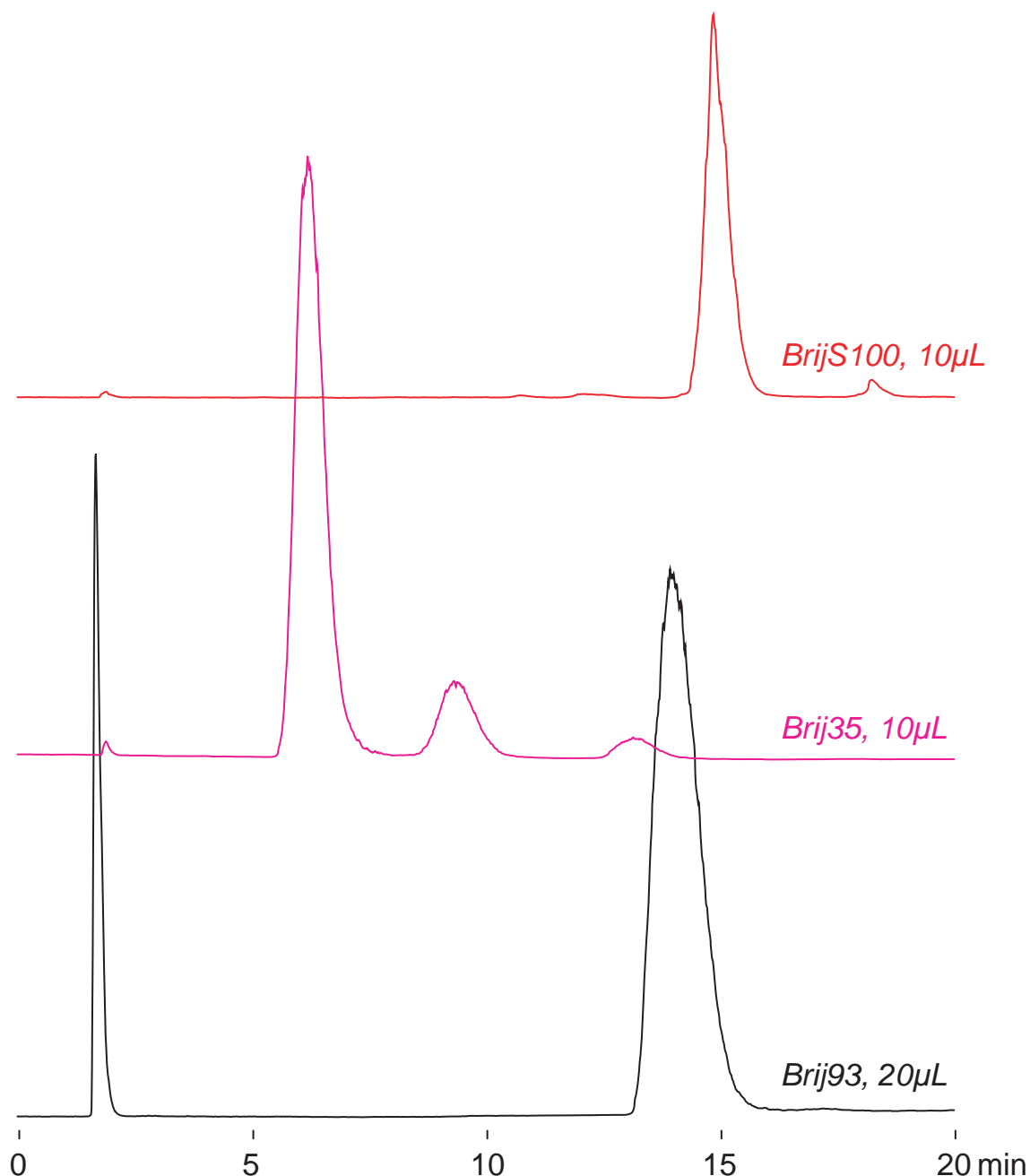
Cadenza CW-C18

150 x 4.6 mm

HPLC COLUMN APPLICATION

Polyoxethylene lauryl ether ( Nonionic surfactant )

ポリオキシエチレンラウリルエーテル ( 非イオン性界面活性剤 )



Cadenza CW-C18, 150 x 4.6 mm

A: water / acetic acid = 100 / 0.5

B: acetonitrile / acetic acid = 100 / 0.5

65-100%B (0-20min)

1.0mL/min (6MPa), 37°C

ELSD (spray chamber 30°C, drift chamber 60°C)

10-20µL (5mg/mL, ACN / 100mM HCOONH<sub>4</sub> = 50 / 50)