

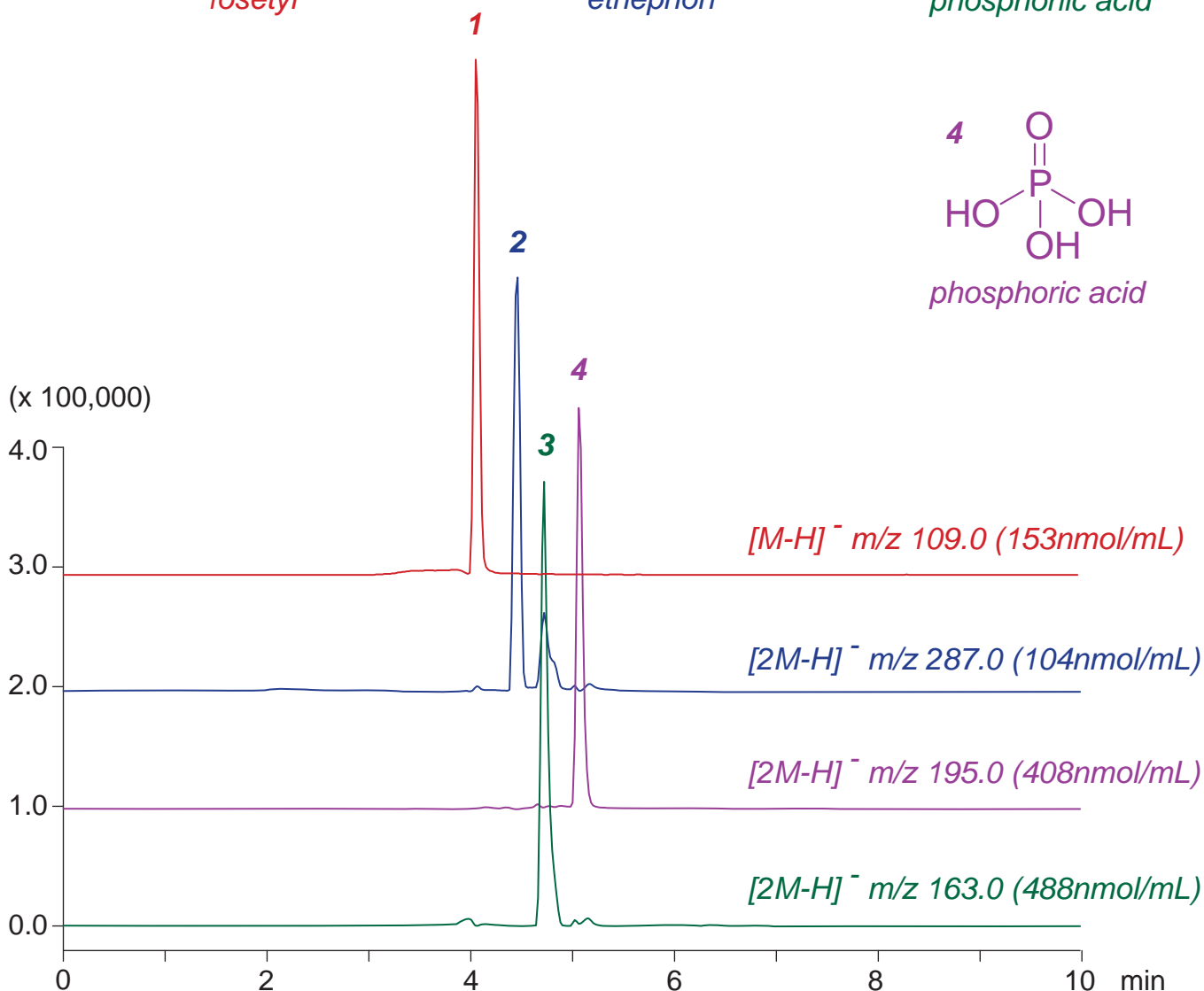
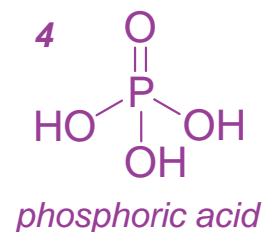
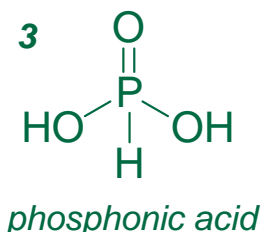
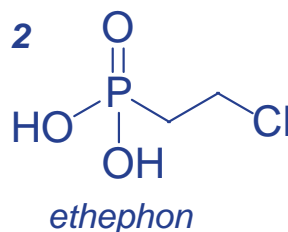
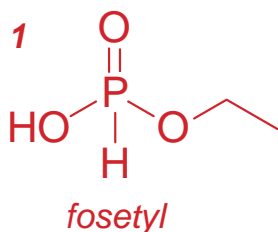
**Intrada Organic Acid**

150 x 2 mm

**HPLC COLUMN APPLICATION**

**LC-MS: Fosetyl, Ethepon, Phosphonic acid, Phosphoric acid**

ホセチル, エテホン, ホスホン酸, リン酸の LC-MS 分析



Intrada Organic Acid, 150 x 2 mm

A: acetonitrile / 100mM ammonium formate = 95 / 5

B: acetonitrile / 100mM ammonium formate = 10 / 90

10%B (0-1min), 10-100%B (1-5min), 100%B (5-10min)

0.2mL/min (6MPa), 37°C, Single Quad. MS (ESI)

5µL (104-488nmol/mL, water / HCOOH = 100 / 2)