

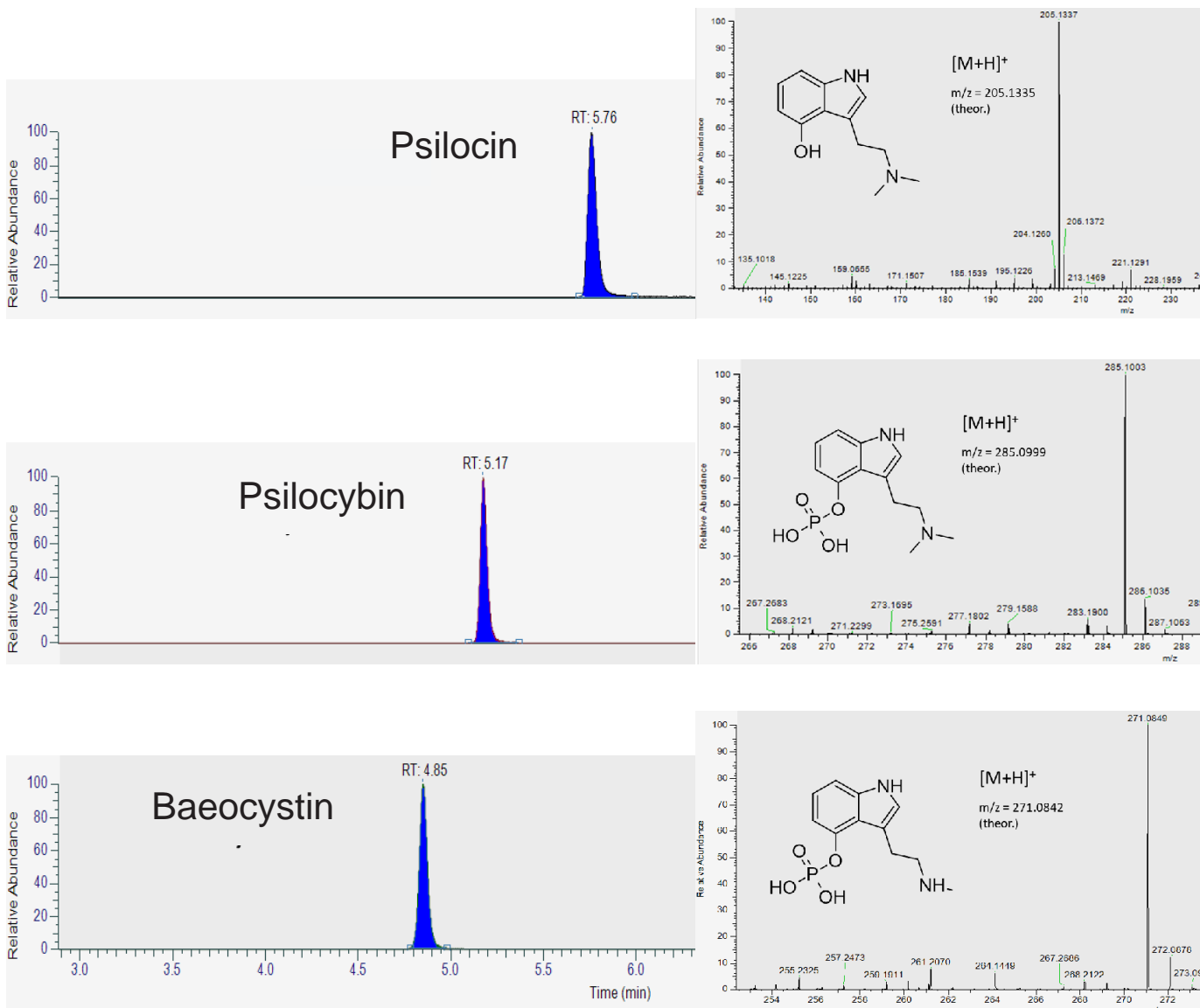
Scherzo SM-C18 MF

150 x 2 mm

HPLC COLUMN APPLICATION

High Resolution Accurate Mass (HRAM) Analysis of 'Magic' Mushroom Psychedelics

マジックマッシュルーム中の幻覚作用物質の高分解能質量分析



Scherzo SM-C18 MF, 150 x 2 mm

A) water / HCOOH = 100 / 0.1

B) ACN / water / HCOOH = 70 / 30 / 0.5

2%B (0-3min), 2-100%B (3-13min), 100%B (13-16min), 100-2%B (16-17min), 2%B (17-22min)

0.3mL/min, 30°C, 0.5µL (~ 5 ppm in 50% ACN/water)

Thermo Orbitrap Exploris 120 MS combined with a Vanquish Flex HPLC at Numinus Bioscience

Courtesy of

Bernd O. Keller, Kristina Grotzinger, Amanda Brunton, Eric Zhou, Maria Baranova, Sharan Sidhu
 Numinus Bioscience, Nanaimo, British Columbia, CANADA