

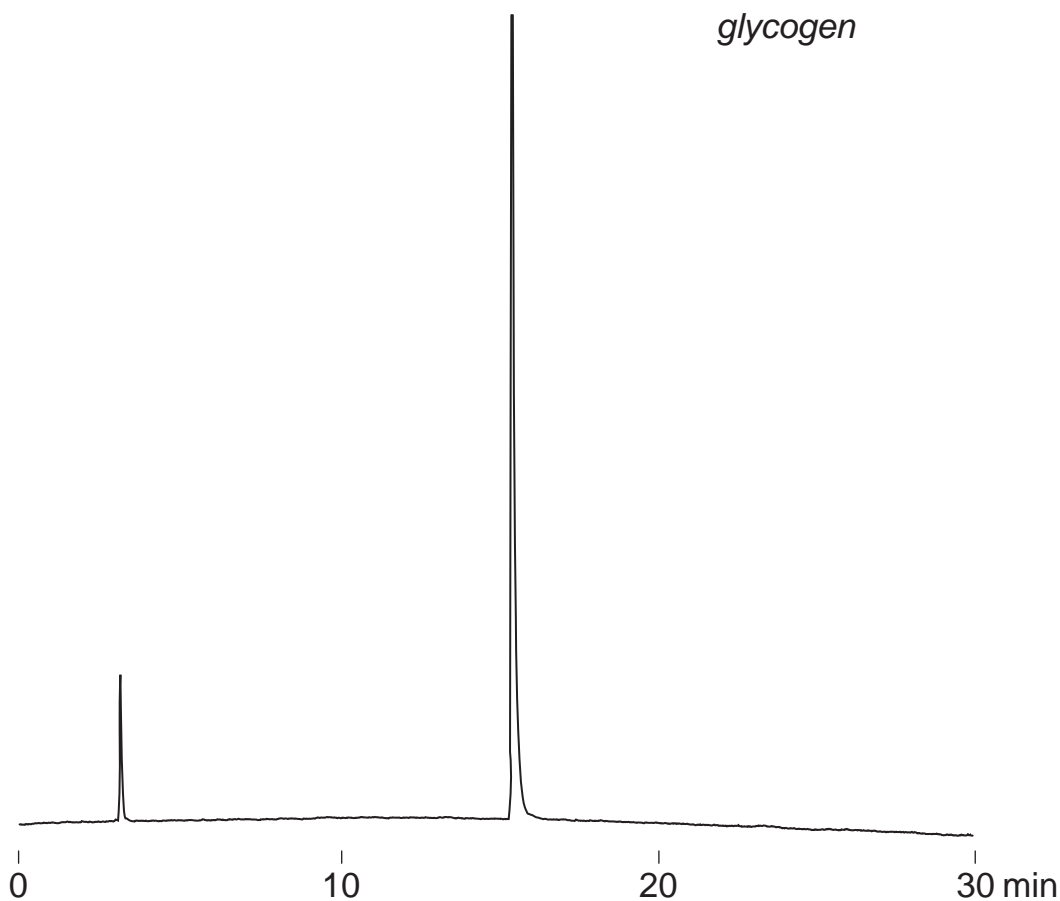
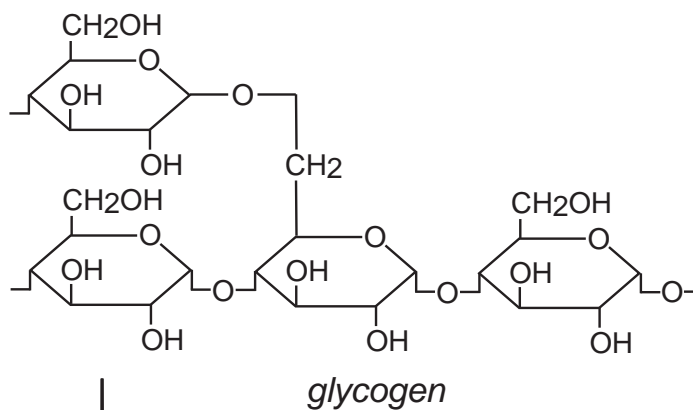
Cadenza CW-C18

250 x 4.6 mm

Application

### Glycogen

グリコーゲン (牡蠣由来)



Cadenza CW-C18, 250 x 4.6 mm  
 A: water / formic acid = 100 / 0.1  
 B: acetonitrile / formic acid = 100 / 0.1  
 0-15%B (0-30min)  
 1mL/min (15MPa), 37°C  
 ELSD (spray chamber 50°C, drift chamber 100°C)  
 10µL (2mg/mL, water)