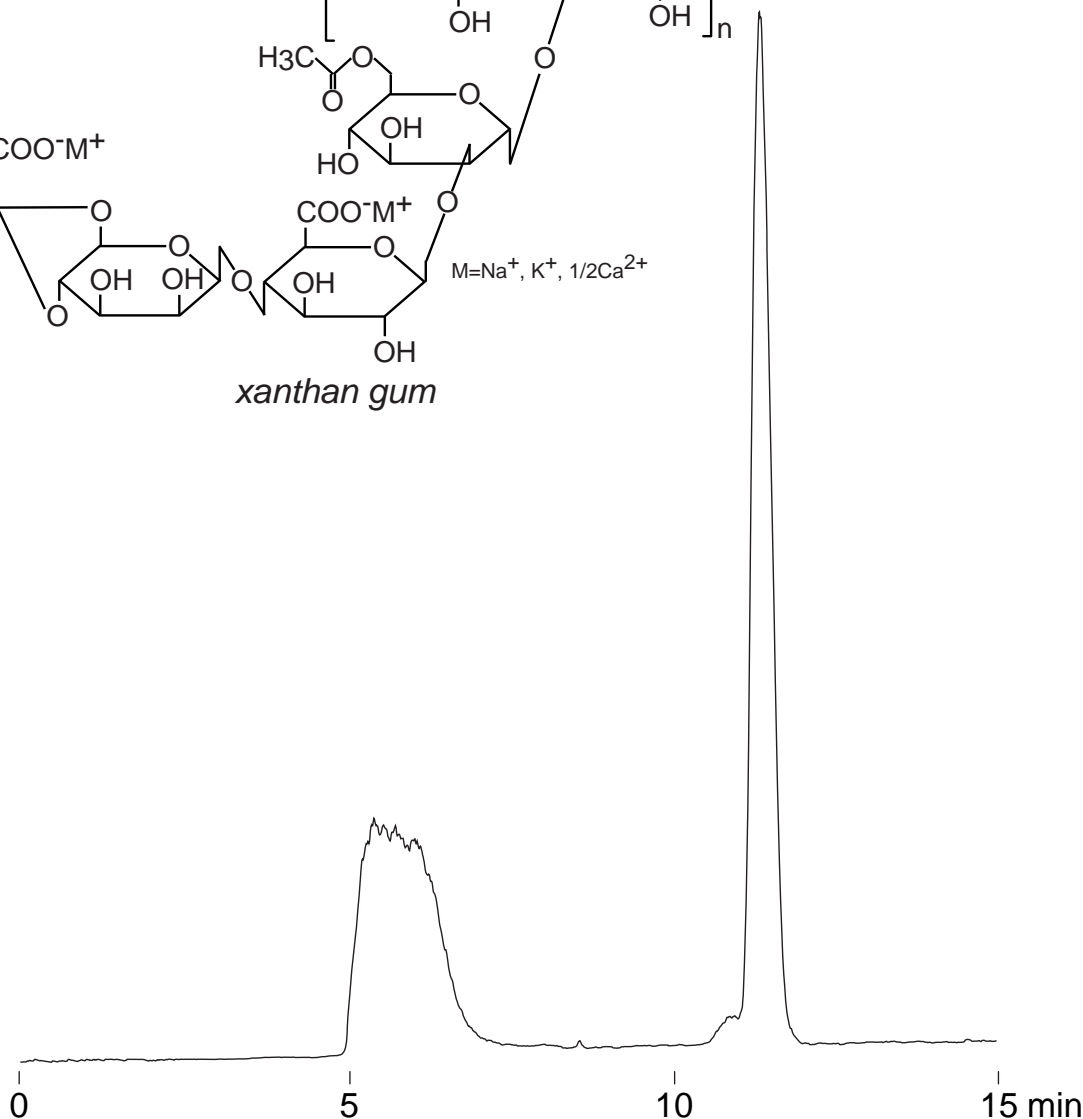
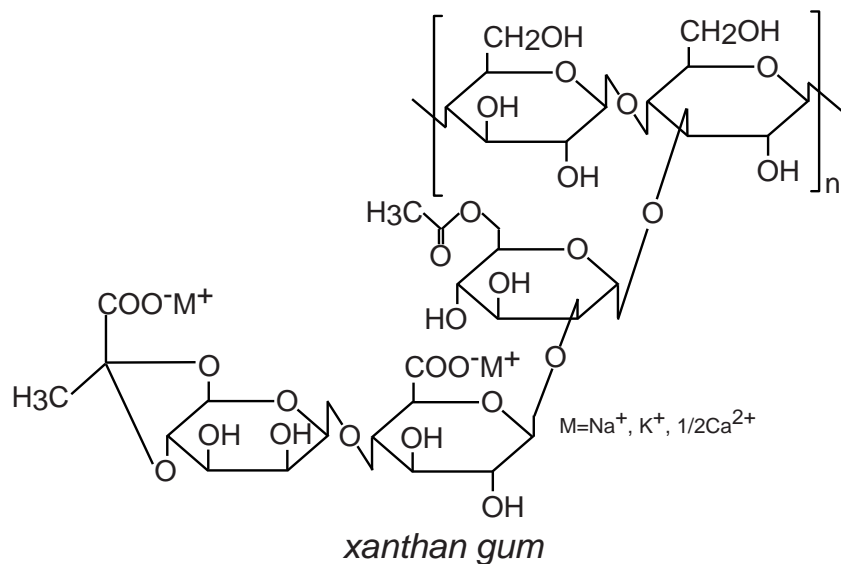


Intrada SEC

250 x 4.6 mm

HPLC COLUMN APPLICATION

SEC: Xanthan gum
キサントランガム



Intrada SEC, 250 x 4.6 mm
100mM ammonium formate
0.3mL/min (5MPa), 37°C
ELSD (spray chamber 50°C, drift chamber 100°C)
10µL (0.5mg/mL, 10mM NaOH)