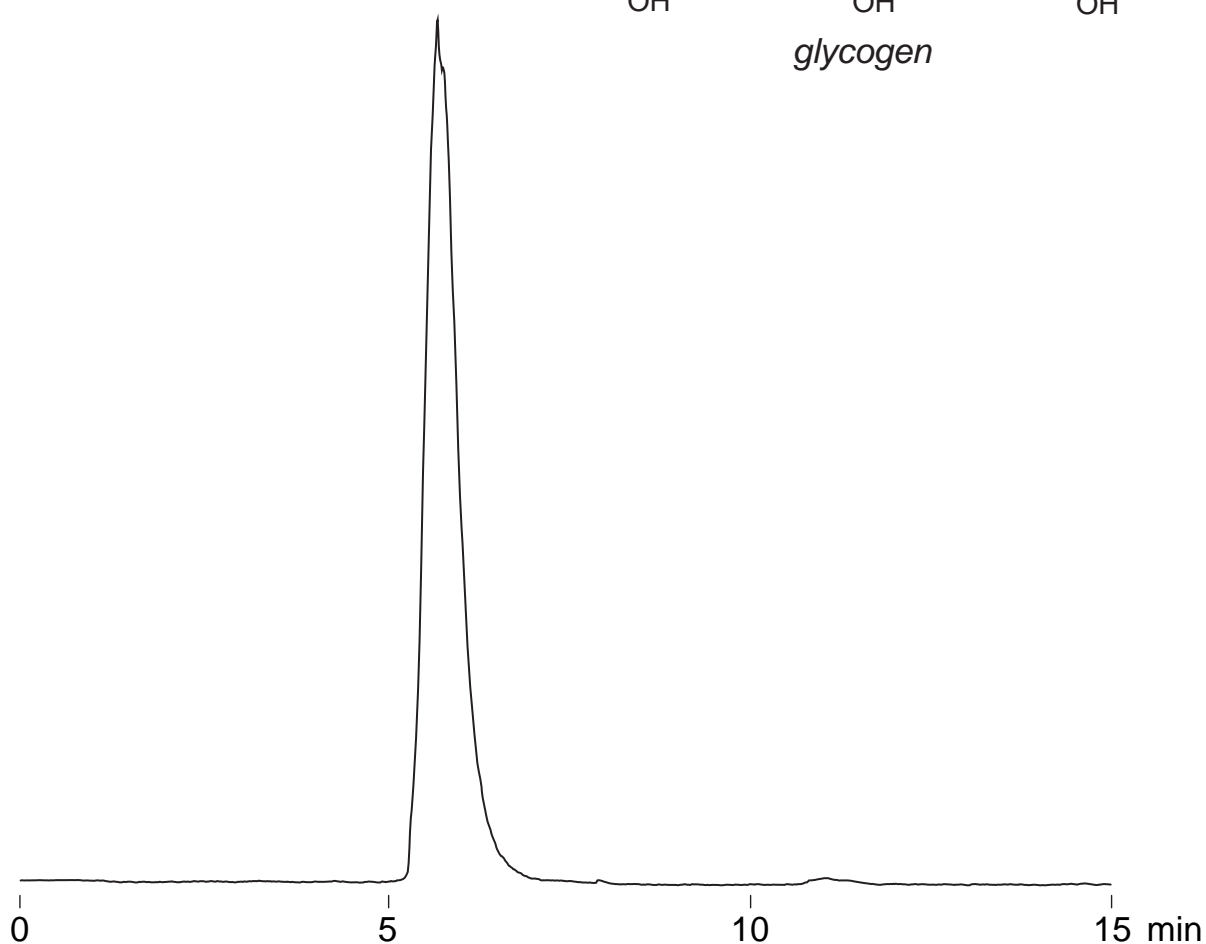
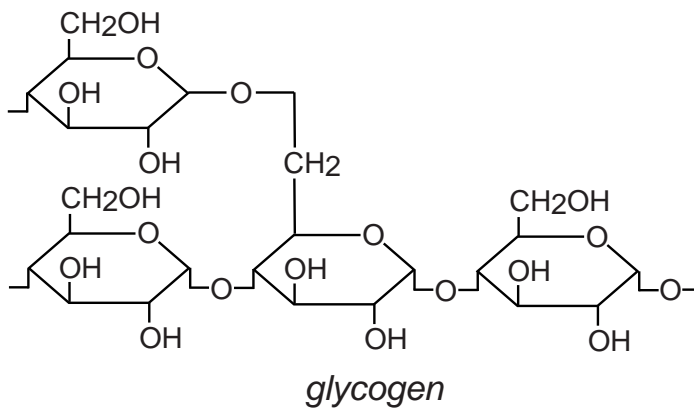


Intrada SEC

250 x 4.6 mm

HPLC COLUMN APPLICATION

SEC: glycogen
 グリコーゲン (牡蠣由来)



*Intrada SEC, 250 x 4.6 mm
 100mM ammonium acetate
 0.3mL/min (5MPa), 37°C,
 ELSD (spray chamber 50°C, drift chamber 100°C)
 10µL (2mg/mL, water)*