

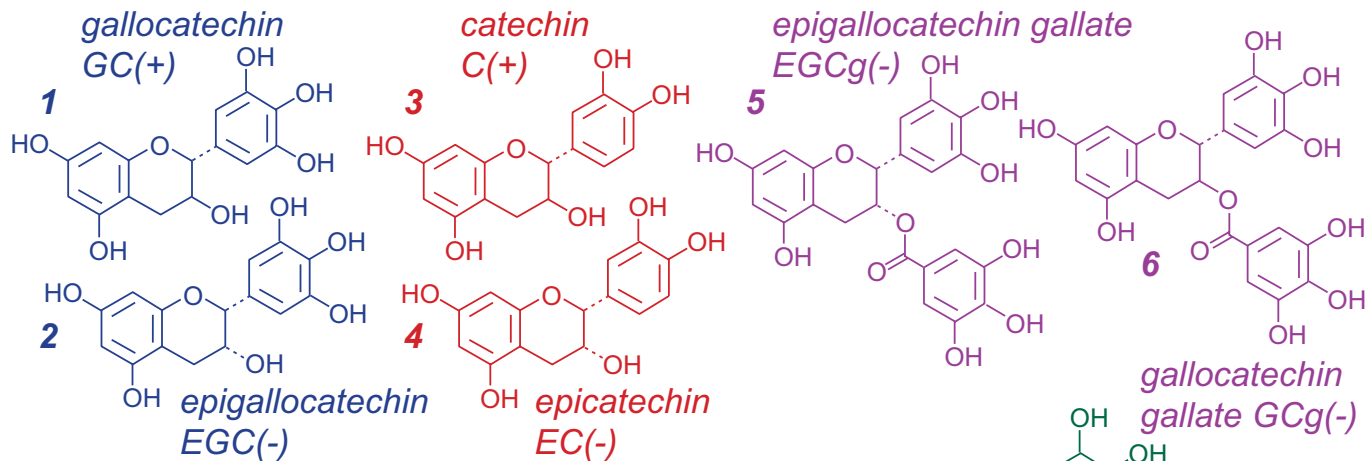
Scherzo SM-C18

150 x 3 mm

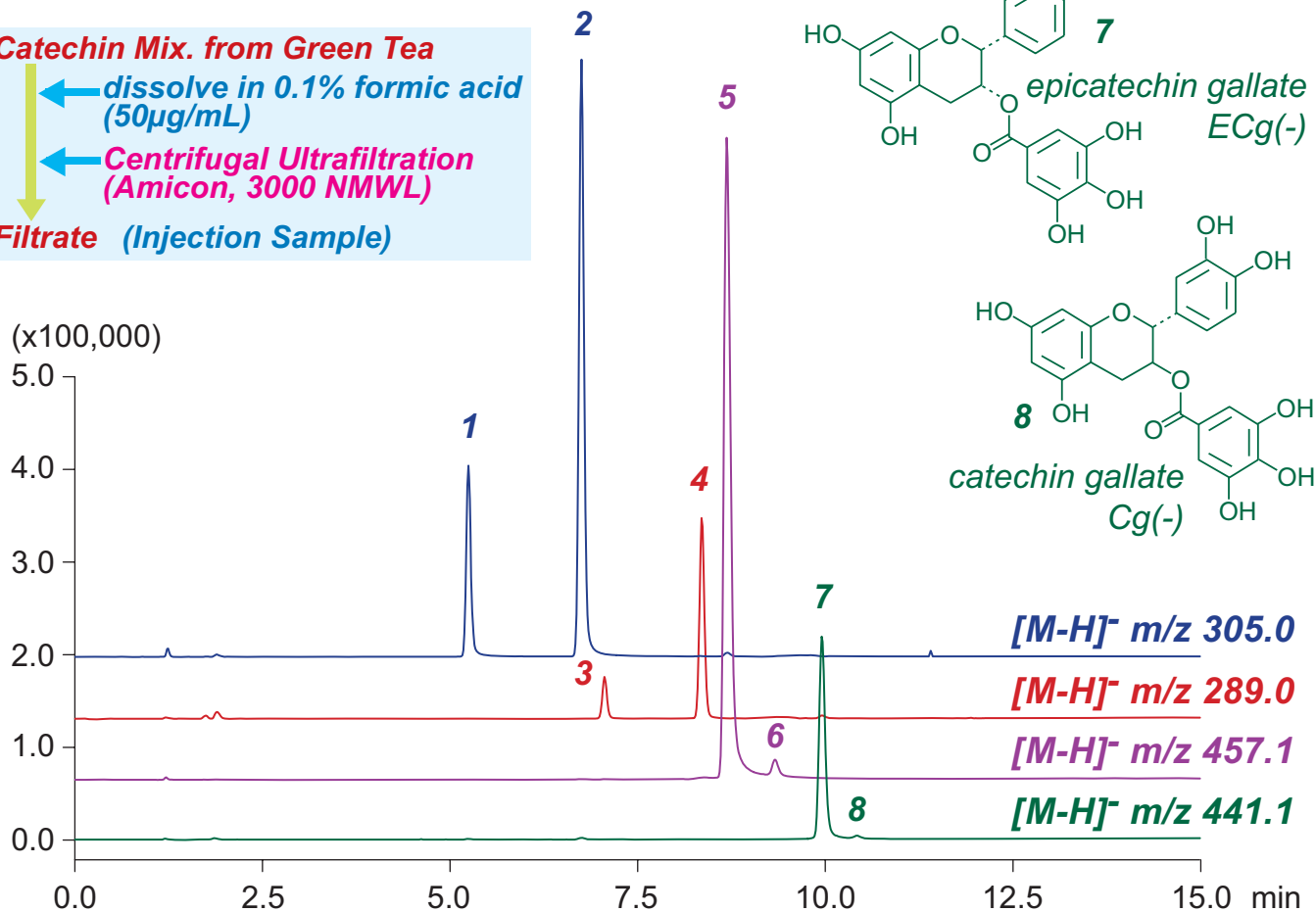
Application

### LC-MS: Catechin Mixture from Green Tea

カテキン混合物(緑茶由来)中のカテキン類のLC-MS分析



**Catechin Mix. from Green Tea**  
 ↓ dissolve in 0.1% formic acid (50µg/mL)  
 ↓ Centrifugal Ultrafiltration (Amicon, 3000 NMWL)  
**Filtrate (Injection Sample)**



Scherzo SM-C18, 150 x 3 mm  
 A: water / formic acid = 100 / 0.1  
 B: methanol / water / formic acid = 60 / 40 / 0.5  
 20%B (0-1min), 20-100%B (1-12min), 100%B (12-15min)  
 0.4mL/min (10MPa), 37°C, 5µL  
 MS (ESI, SIM, Negative)