

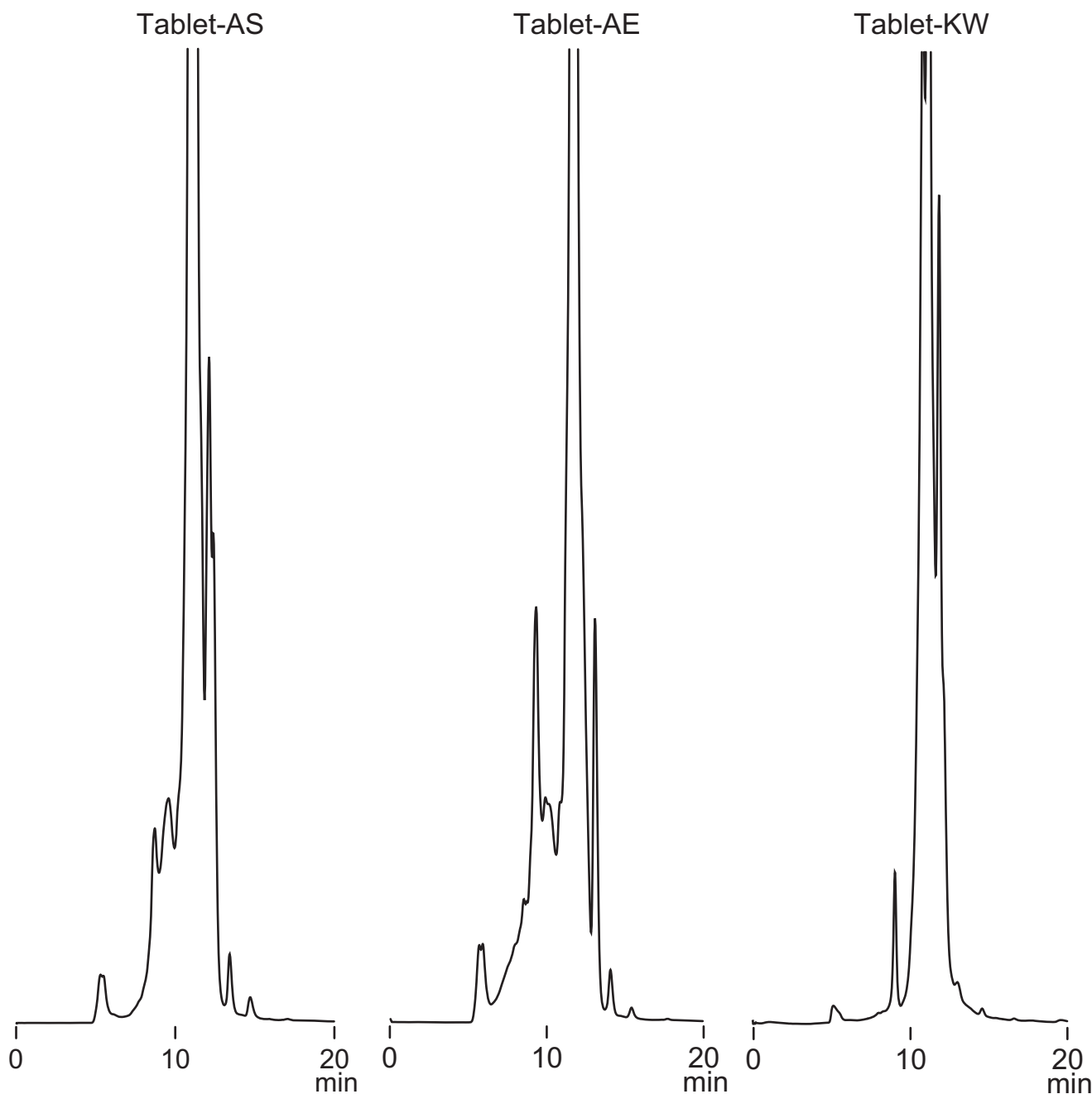
**Intrada SEC**

250 x 4.6 mm

Application

**SEC: Beer yeast extract tablets**

ビール酵母錠剤成分のSEC分離



*Intrada SEC, 250 x 4.6 mm  
100mM ammonium formate  
0.3 mL/min, 37°C, 280nm  
10 µL (1 tablet / 1mL, 100mM ammonium formate)*