

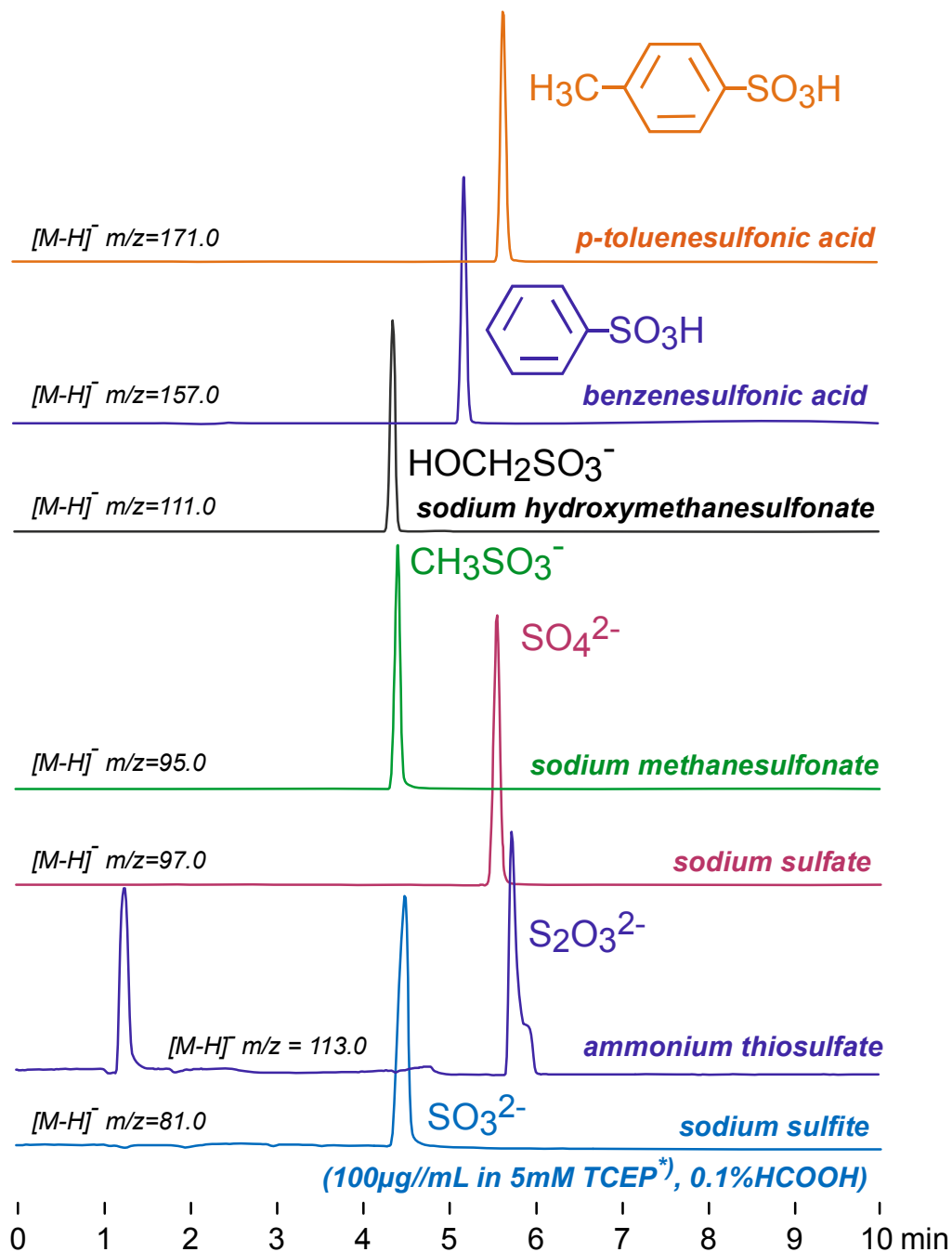
**Intrada Organic Acid**

150 x 2 mm

Application

**LC-MS: Sulfonic acids and sulfuric acids**

スルホン酸, 硫酸類のLC-MS分析



<sup>\*</sup>) TCEP: tris(2-carboxyethyl)phosphine)

**Intrada Organic Acid, 150 x 2mm**

**A: acetonitrile / water / formic acid = 10 / 90 / 0.1**

**B: acetonitrile / 100mM ammonium formate = 10 / 90**

**0%B (0-1min), 0-100%B (1-7min), 100%B (7-10min)**

**0.2mL/min, 37°C, MS (ESI, SIM, Negative)**

**5 $\mu$ L (50-100 $\mu$ g/mL in 0.1% HCOOH)**