

Cadenza CX-C18

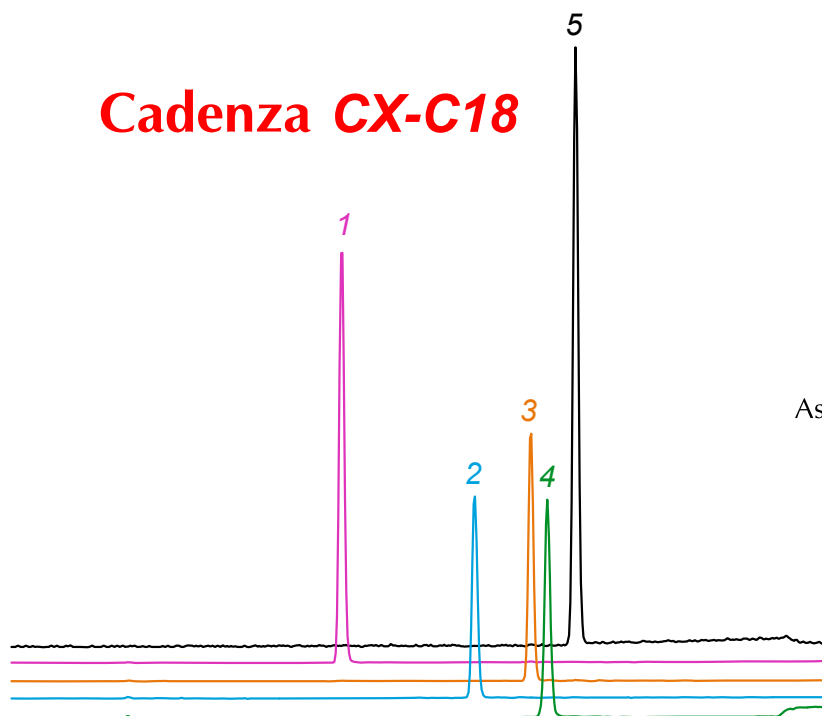
150 x 3 mm

Application

LC-MS: Peptides (Angiotensin)

ペプチド(アンジオテンシン)のLC-MS分析

Cadenza CX-C18



1. Angiotensin III (Human)
 $[M+2H]^{2+}$ m/z 466.2
 Arg-Val-Tyr-Ile-His-Pro-Phe

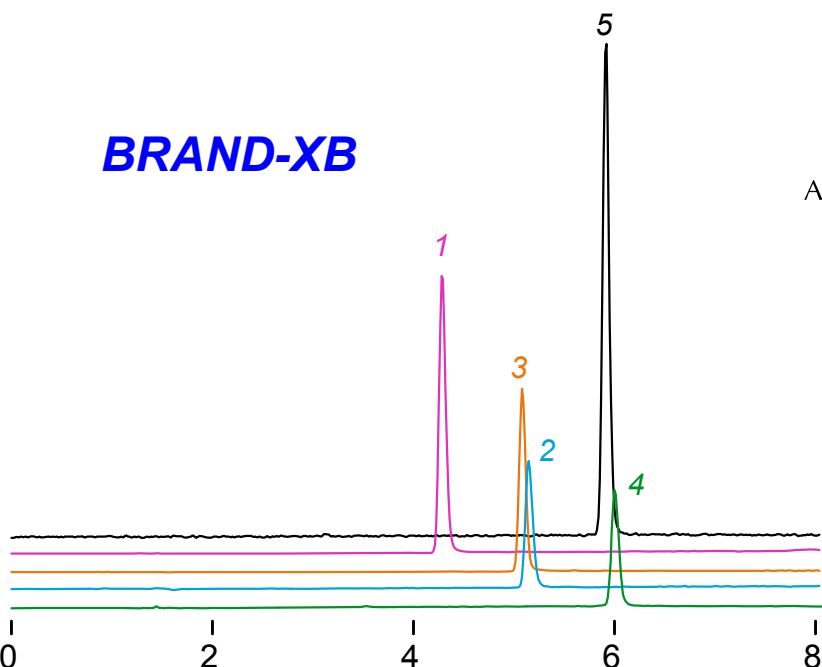
2. [Val⁵]- Angiotensin I (Bovine)
 $[M+3H]^{3+}$ m/z 428.2

Asp-Arg-Val-Tyr-Val-His-Pro-Phe-His-Ile

3. Angiotensin II (Human)
 $[M+2H]^{2+}$ m/z 523.7

Asp-Arg-Val-Tyr-Ile-His-Pro-Phe

BRAND-XB



4. Angiotensin I (Human)
 $[M+3H]^{3+}$ m/z 432.9

Asp-Arg-Val-Tyr-Ile-His-Pro-Phe-His-Ile

5. Angiotensin IV (Human)
 $[M+2H]^{2+}$ m/z 388.2

Val-Tyr-Ile-His-Pro-Phe

150 x 3 mm

A: water / formic acid = 100 / 0.1

B: acetonitrile / formic acid = 100 / 0.1

CX-C18 (5-30%B in 15min), Brand-XB (15-40%B in 15min)

0.4 mL/min (9-10MPa), 37°C, 1μL (1μg/mL, water), ESI (positive)