

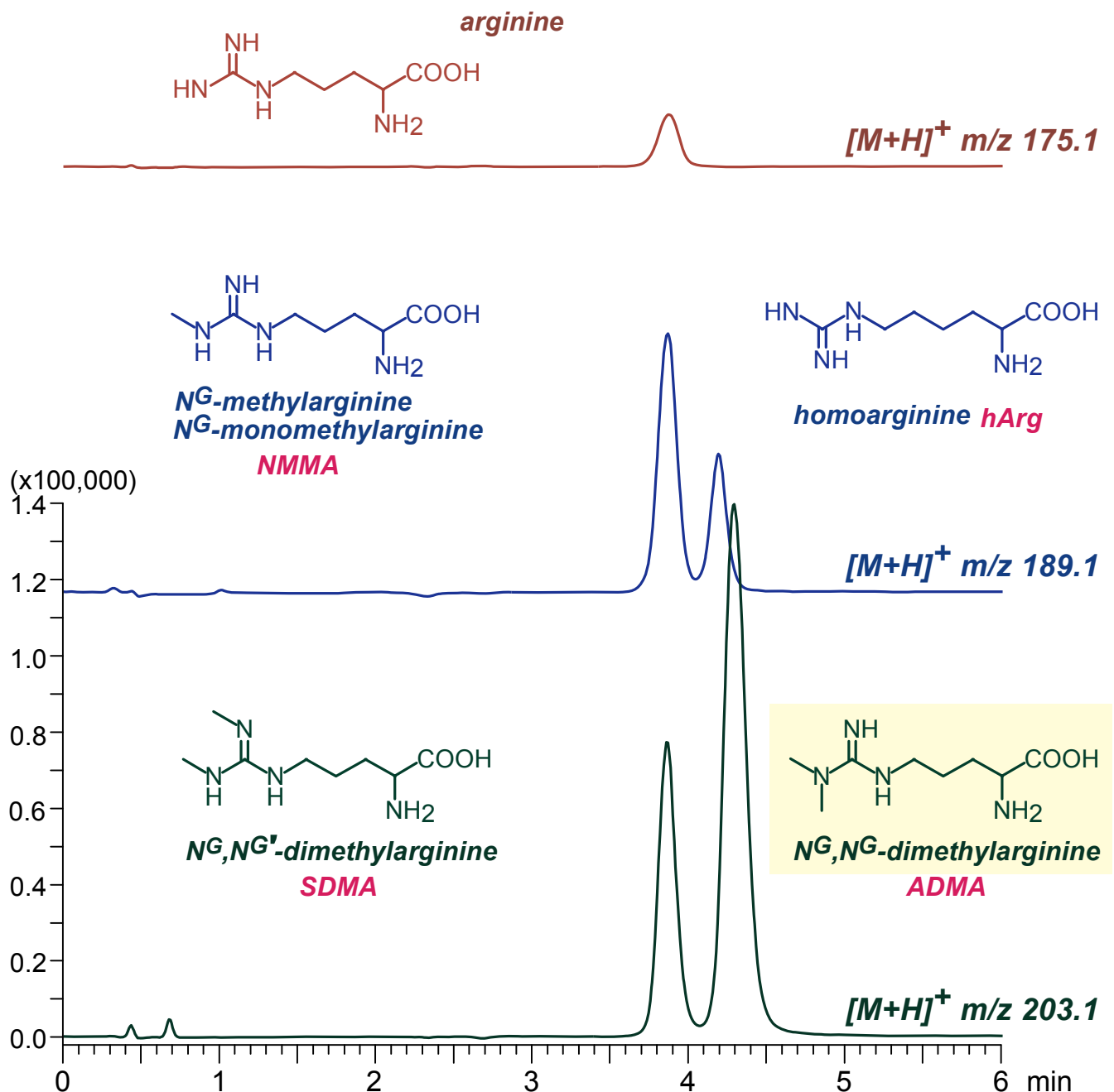
**Intrada** Amino Acid

75 x 2 mm

Application

LC-MS: Asymmetric / symmetric dimethylarginines (ADMA/SDMA) and related compounds

非対称性ジメチルアルギニン(ADMA)及び関連化合物のLC-MS分析



*Intrada* Amino Acid, 75 x 2 mm

A: 50mM ammonium formate

B: 100mM ammonium formate / methanol = 70 / 30

20-28%B (0-6min)

0.4 mL/min (10MPa), 37°C, 5  $\mu$ L (0.66-2.4 nmol/mL, 1% formic acid)

Single Quad. MS (ESI, positive)