

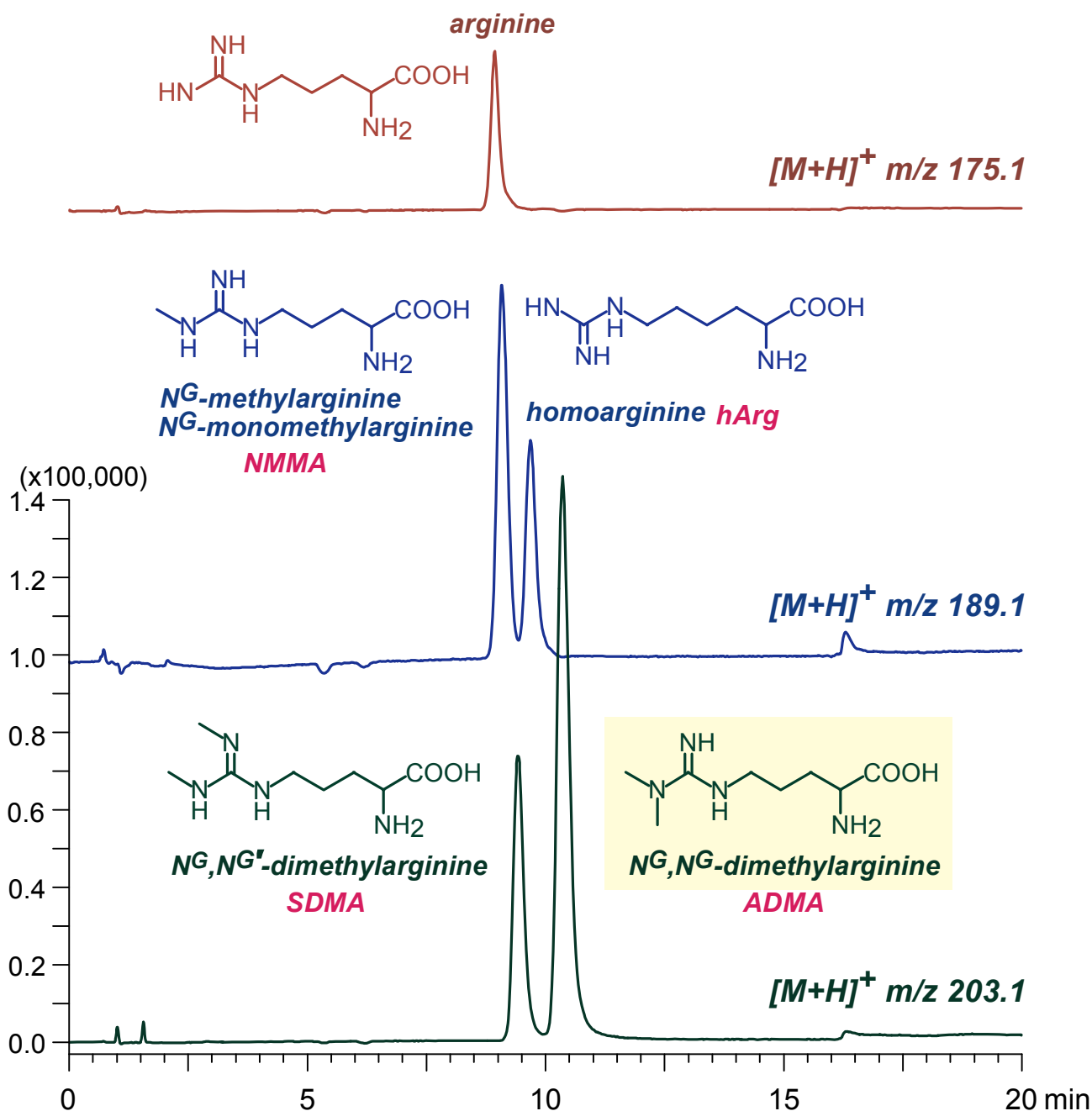
**Intrada** Amino Acid

100 x 3 mm

Application

LC-MS: Asymmetric / symmetric dimethylarginines (ADMA/SDMA) and related compounds

非対称性ジメチルアルギニン(ADMA)及び関連化合物のLC-MS分析



Intrada Amino Acid, 100 x 3 mm

A: 50mM ammonium formate

B: 100mM ammonium formate / methanol = 70 / 30

20-50%B (0-15min), 100%B(15-20min)

0.5 mL/min (8MPa), 37°C, 10  $\mu$ L (0.66-2.4 nmol/mL, 1% formic acid)

Single Quad. MS (ESI, positive)

Copyrighted by Imtakt Corporation, 2018