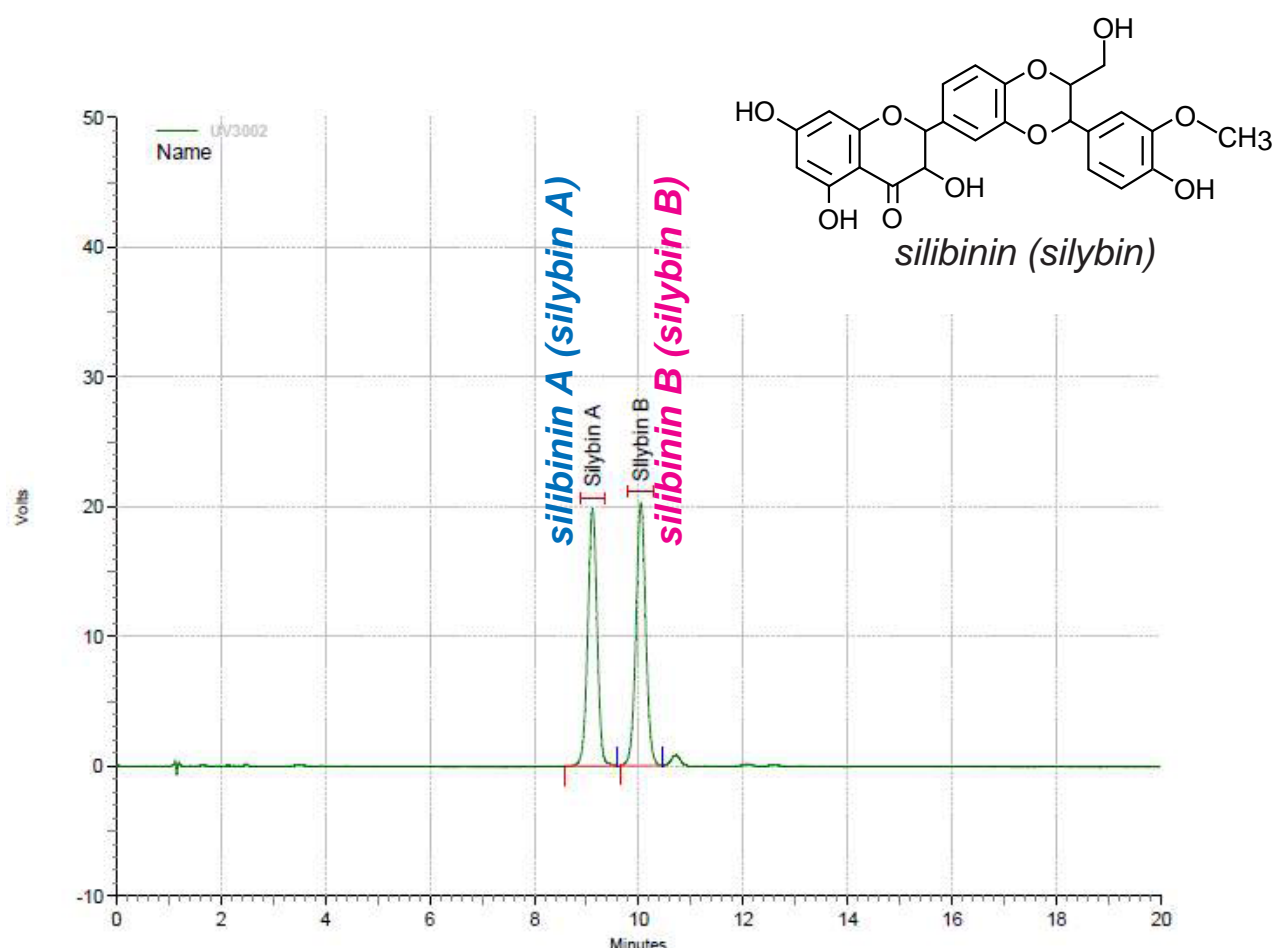


Cadenza CL-C18

100 x 4.6 mm

Application

Silibinin (Silybin) diastereomers, major components of silymarin  
 シリマリン活性成分 シリビニン(シリビン)



Cadenza CL-C18, 100 x 4.6 mm

A: 0.5% phosphoric acid

B: 0.5% phosphoric acid in methanol

45%B (0-5min), 45-50%B (5-12min), 50-45%B (12-15min), 45%B(15-20min)

0.9 mL/min, 35°C

5 µL (STD 50ppm in methanol)

288nm

Courtesy of PEAKMAN SP, KOREA