

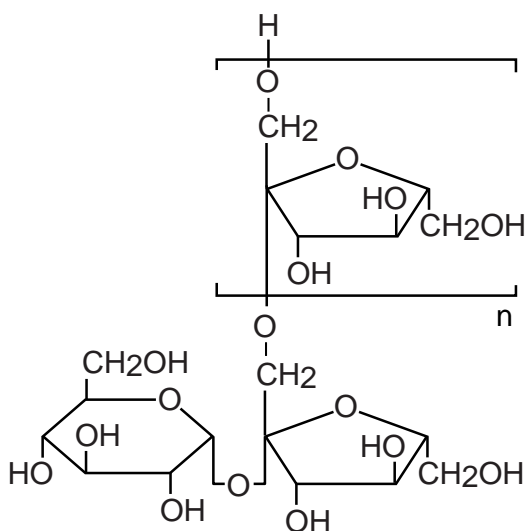
Intrada SEC

250 x 4.6 mm

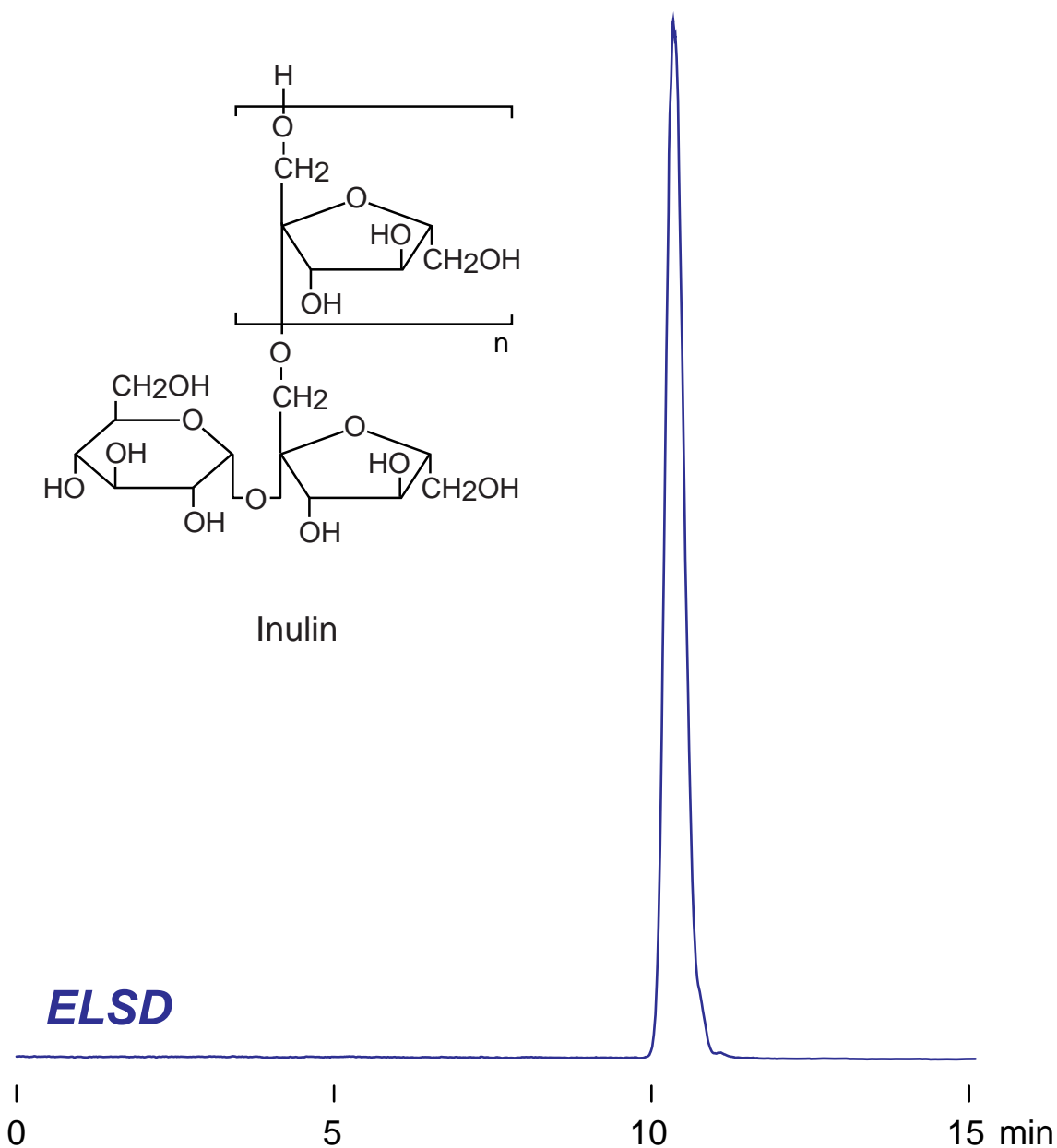
Application

Inulin

イヌリン



Inulin



*Intrada SEC, 250 x 4.6 mm
100mM ammonium formate
0.3 mL/min (5MPa), 37°C
10 μ L, (1mg/mL, water)
ELSD (Spray Chamber 50°C, Drift Tube 100°C)*