

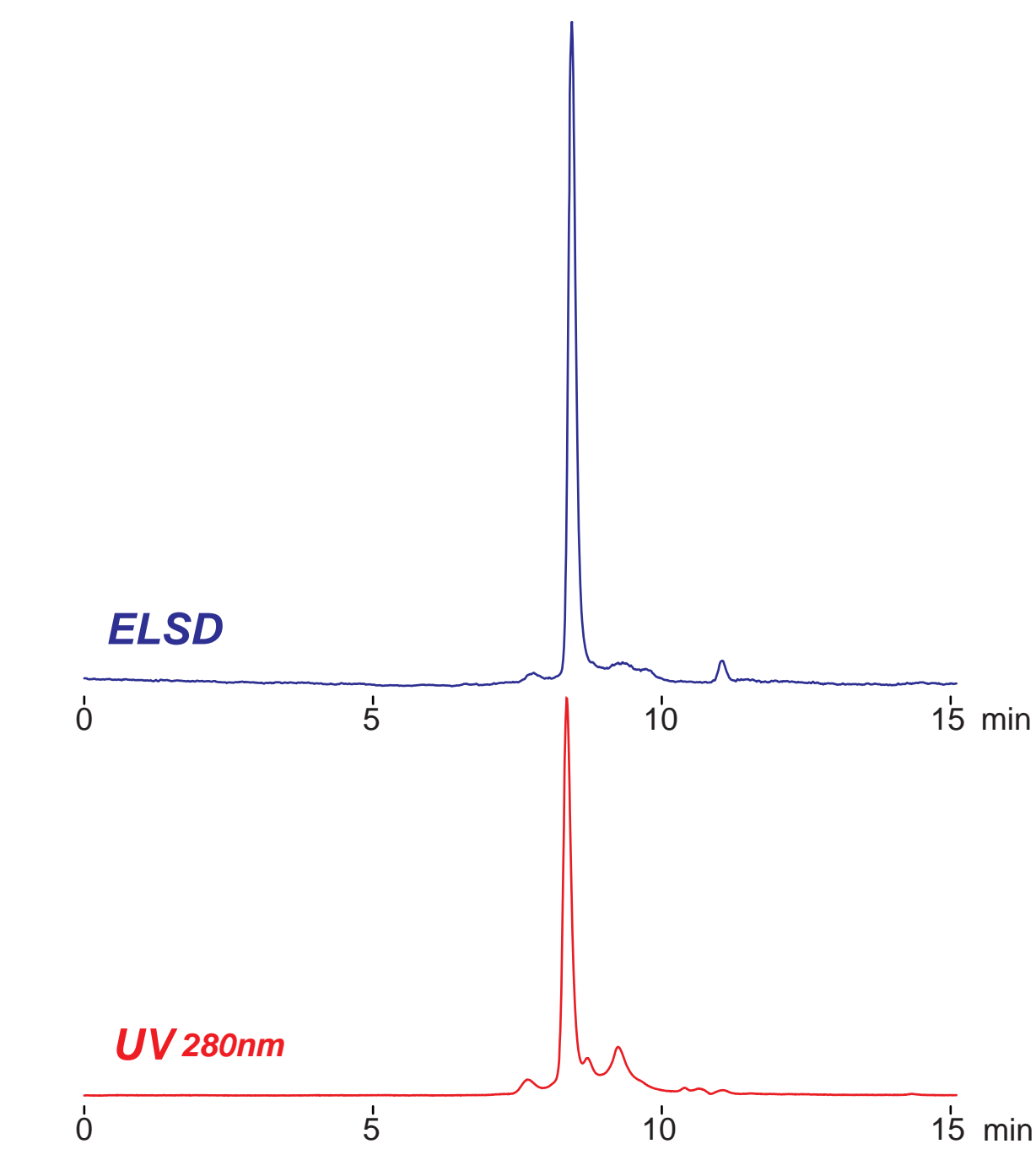
Intrada SEC

250 x 4.6 mm

Application

SEC: Bovine serum albumin (BSA)

ウシ血清アルブミン (BSA) のSEC分離



*Intrada SEC, 250 x 4.6 mm
100mM ammonium formate
0.3 mL/min (5MPa), 37°C
5 µL, (1mg/mL, water)*