

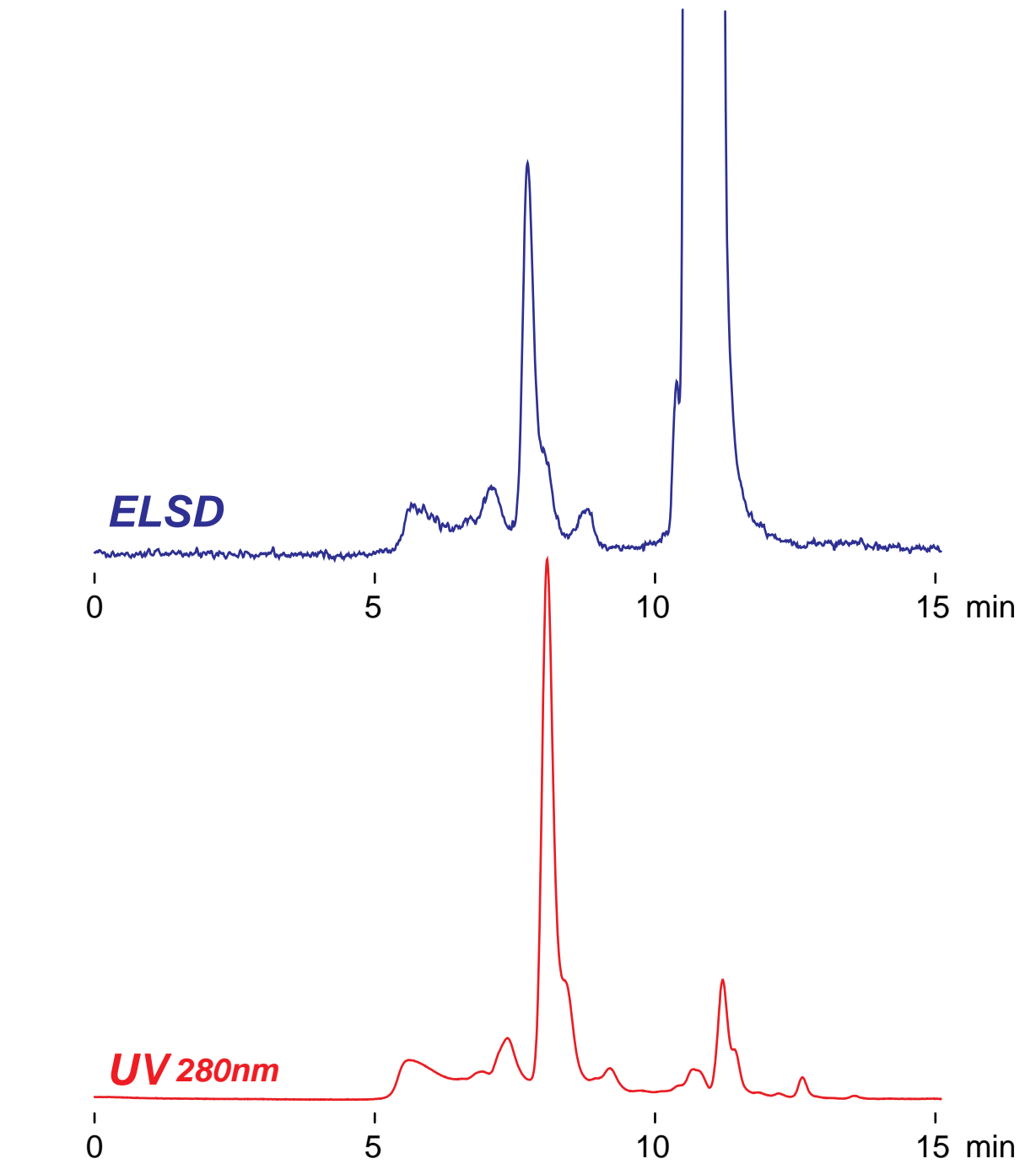
**Intrada SEC**

250 x 4.6 mm

Application

SEC: mAb (Anti-Human luteinizing hormone)

モノクローナル抗体 (Anti-Human luteinizing hormone)のSEC分離



Intrada SEC, 250 x 4.6 mm  
100mM ammonium formate  
0.3 mL/min (5MPa), 37°C  
20  $\mu$ L, (1mg/mL, PBS + 0.05% NaN3)