

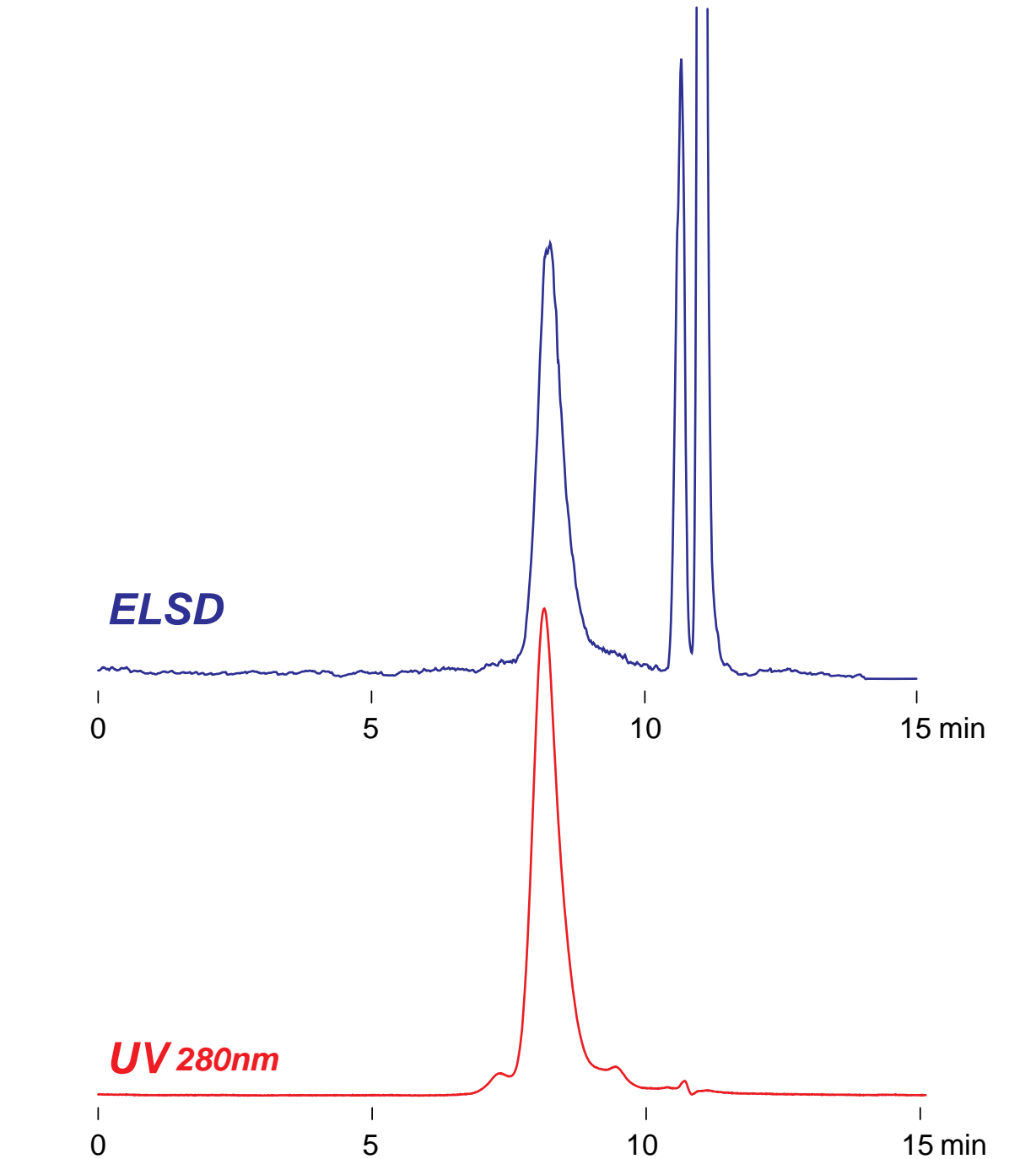
Intrada SEC

250 x 4.6 mm

Application

SEC: IgG, from human serum

ヒト血清中IgGのSEC分離



*Intrada SEC, 250 x 4.6 mm
100mM ammonium formate
0.3 mL/min (5MPa), 37°C
10 µL, (0.5mg/mL, PBS pH 7.3)*