

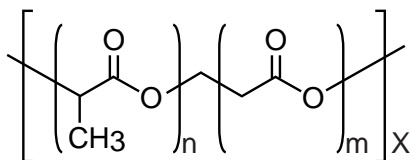
**Intrada SEC**

250 x 4.6 mm

Application

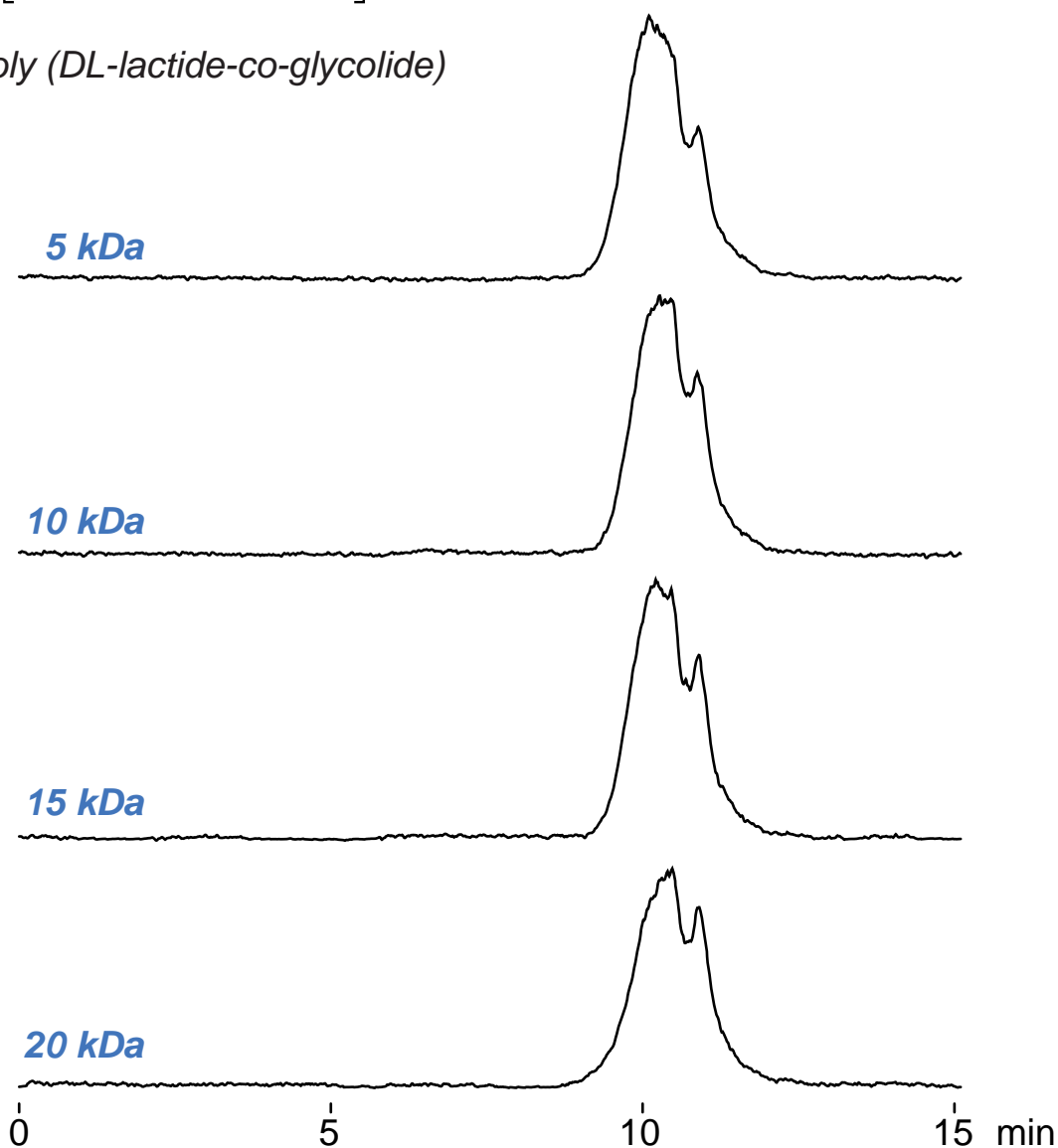
**SEC: PLGA, Poly(lactic-co-glycolic acid)**

ポリ乳酸-グリコール酸共重合体(PLGA)のSEC分離



**lactide / glycolide**  
**= 75 / 25 (mole %)**

poly (DL-lactide-co-glycolide)



Intrada SEC, 250 x 4.6 mm  
acetonitrile / water = 65 / 35  
0.3 mL/min (3MPa), 60°C  
2 μL (5mg/mL, THF)

**ELSD**