

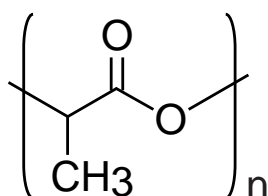
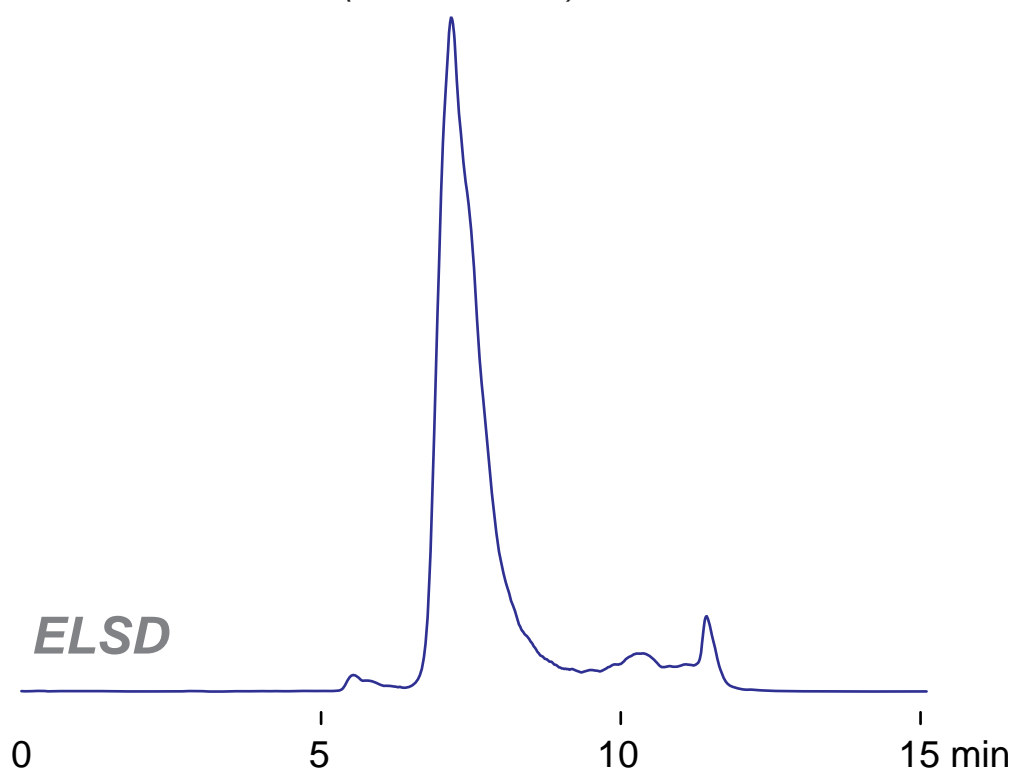
**Intrada SEC**

250 x 4.6 mm

Application

**SEC: Polylactide (PLA)**

ポリ乳酸のSEC分離

*poly DL-lactide*  
(75 ~ 120 kDa)

*Intrada SEC, 250 x 4.6 mm*  
*acetonitrile / water = 80 / 20*  
*0.3 mL/min (3MPa), 37°C*  
*5 μL (5mg/mL, THF)*