

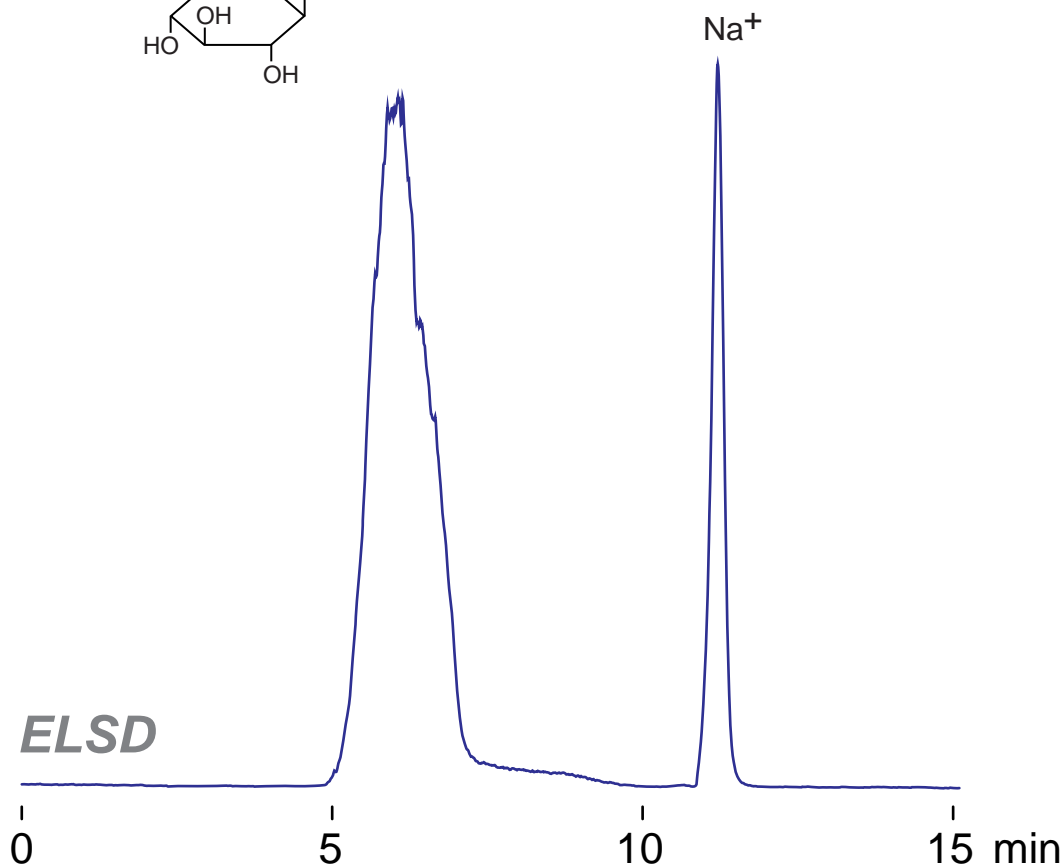
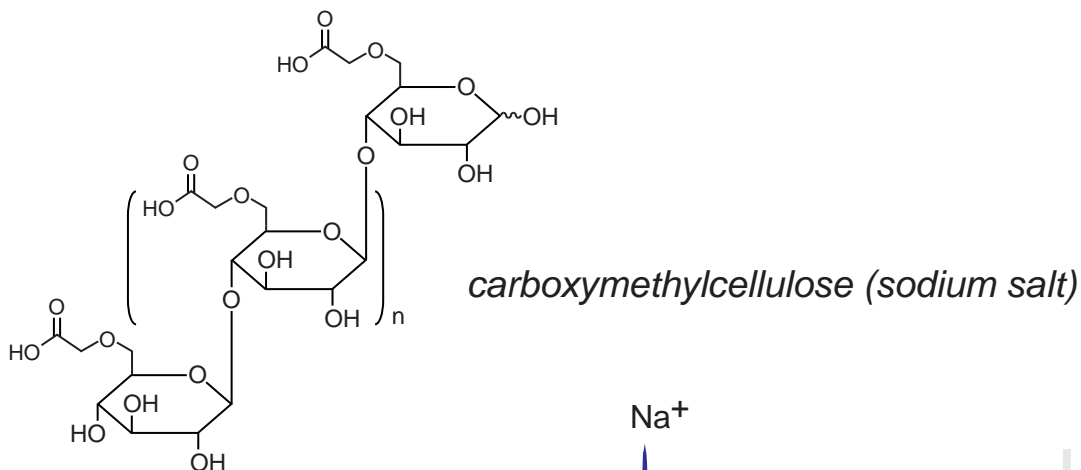
Intrada SEC

250 x 4.6 mm

Application

SEC: Carboxymethyl cellulose (CMC)

カルボキシセルロース(CMC)のSEC分離



Intrada SEC, 250 x 4.6 mm
 100mM ammonium formate
 0.3 mL/min (5MPa), 37°C
 10 μL (5mg/mL, eluent)