

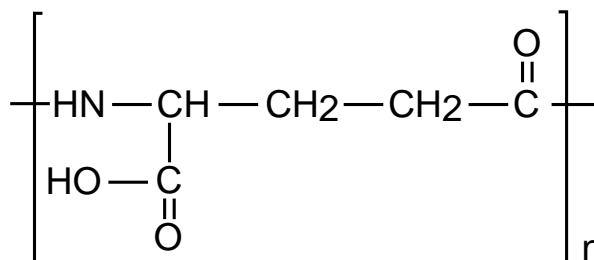
Intrada SEC

250 x 4.6 mm

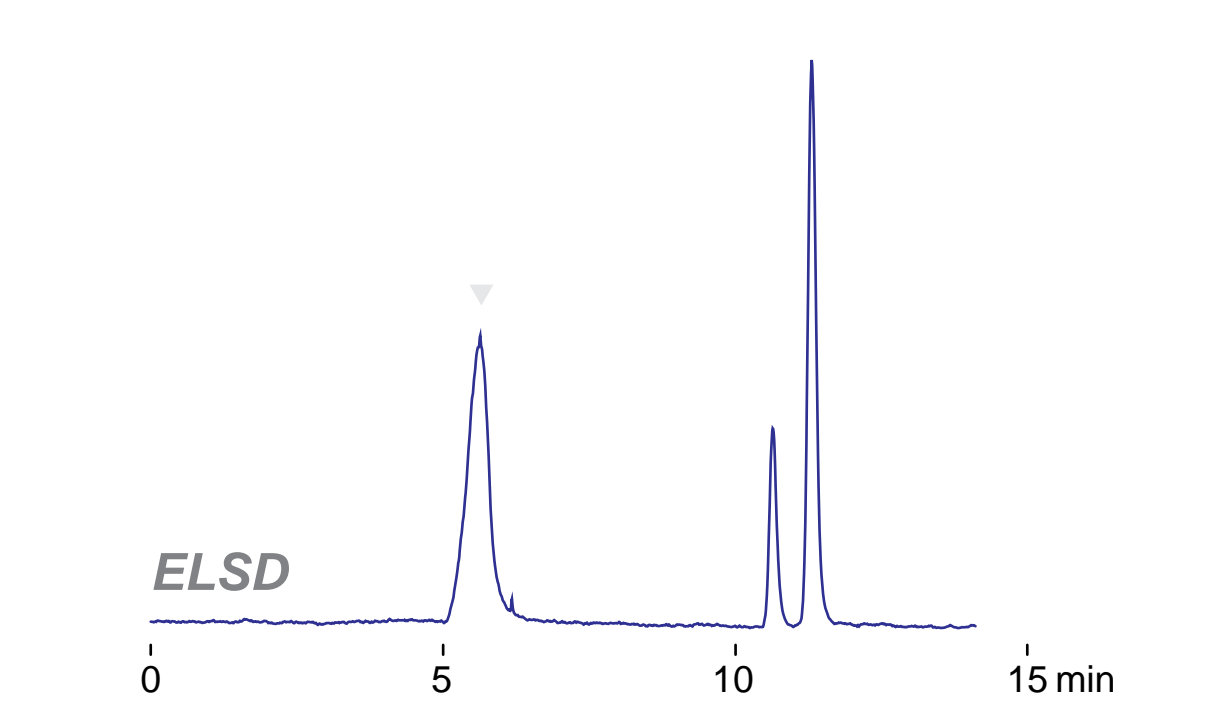
Application

SEC: Poly-gamma-glutamic acid

ポリ-γ-グルタミン酸のSEC分離



poly-gamma-glutamic acid (MW 1.5 - 2.5 MDa, Na salt)



*Intrada SEC, 250 x 4.6 mm
 100mM ammonium formate
 0.3 mL/min (5MPa), 37°C
 5 µL (1mg/mL, eluent)*