

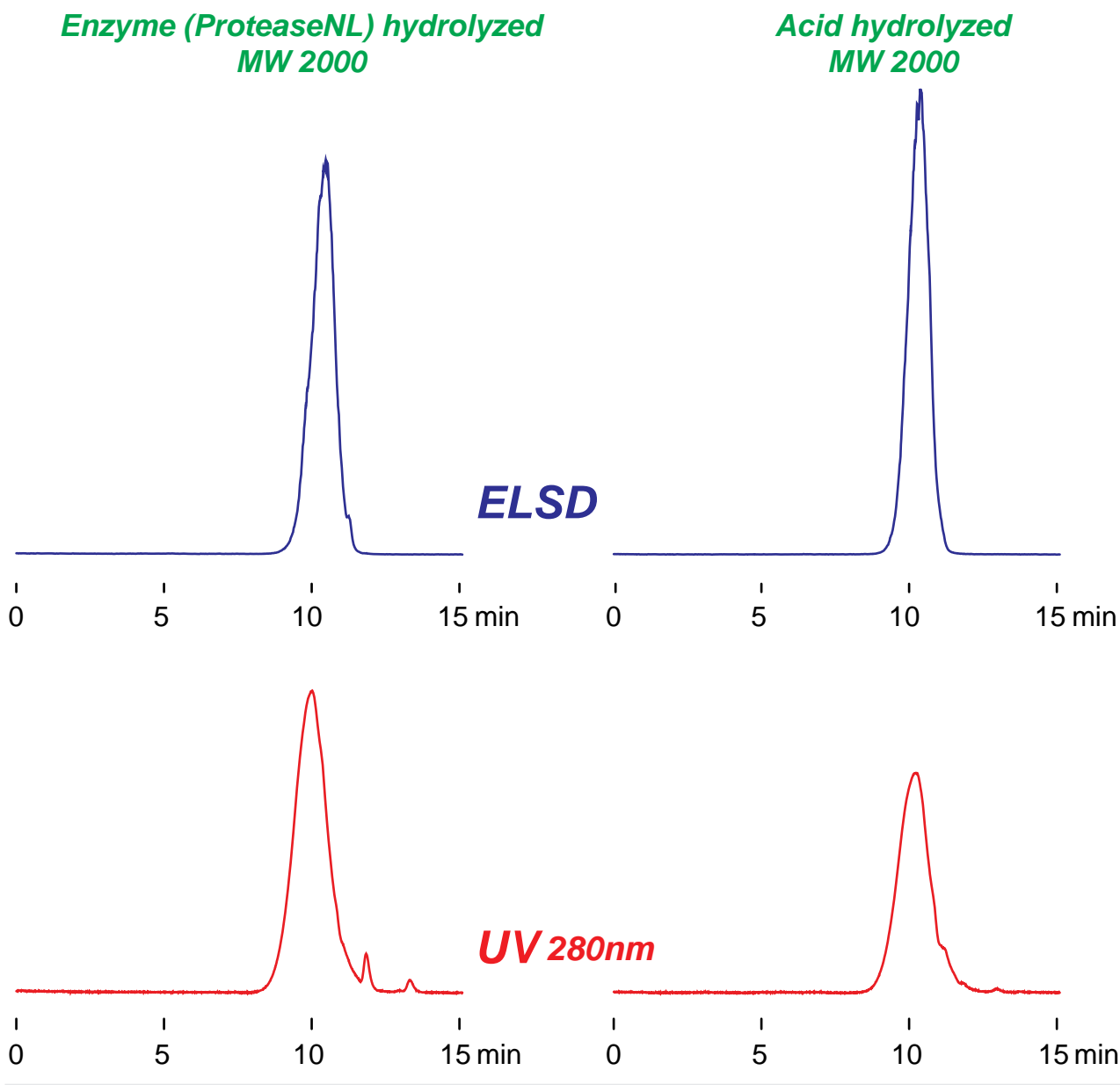
Intrada SEC

250 x 4.6 mm

Application

SEC: Collagenpeptide

コラーゲンペプチドのSEC分離



Intrada SEC, 250 x 4.6 mm
100mM ammonium formate
0.3 mL/min (5MPa), 37°C
10 µL(ELSD), 20 µL(UV) (5mg/mL, water)