

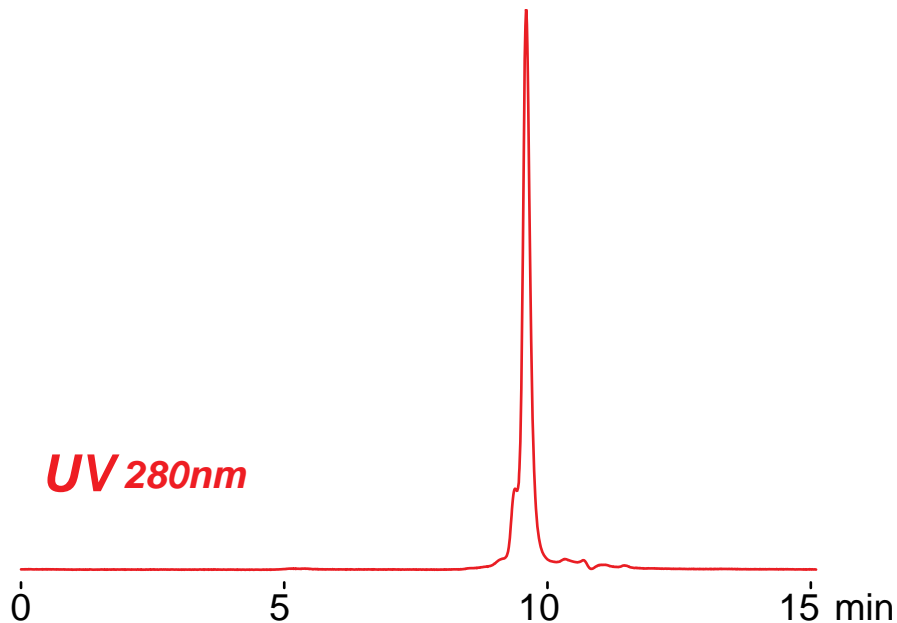
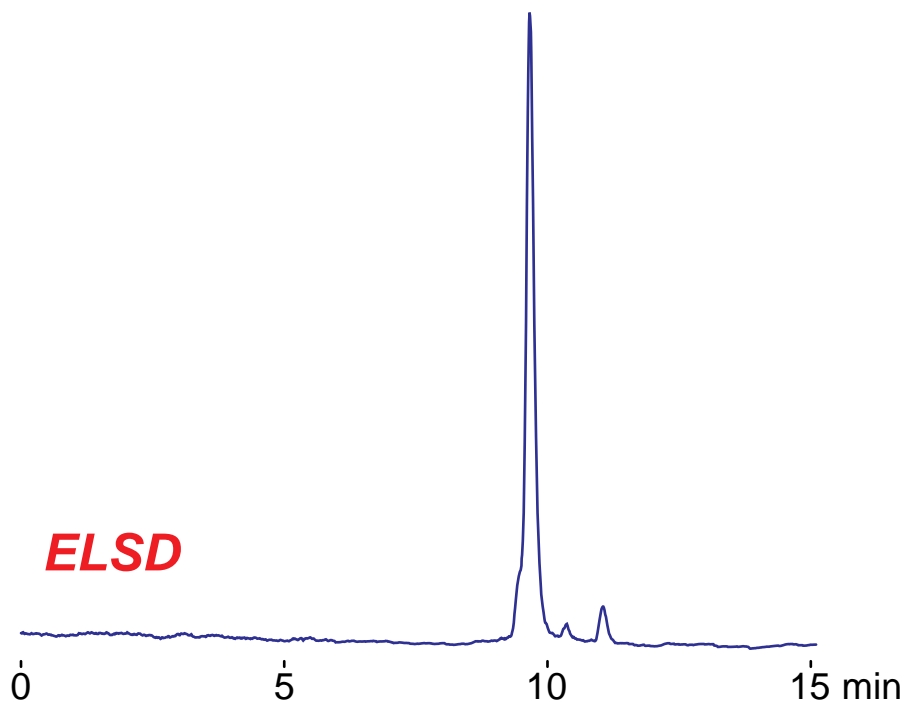
**Intrada SEC**

250 x 4.6 mm

Application

SEC:  $\alpha$ -lactalbumin, from bovine milk

$\alpha$ -ラクトアルブミンのSEC分離



Intrada SEC, 250 x 4.6 mm  
100mM ammonium formate  
0.3 mL/min (5MPa), 37°C  
5, 10  $\mu$ L (1mg/mL, water)