

**Intrada SEC**

250 x 4.6 mm

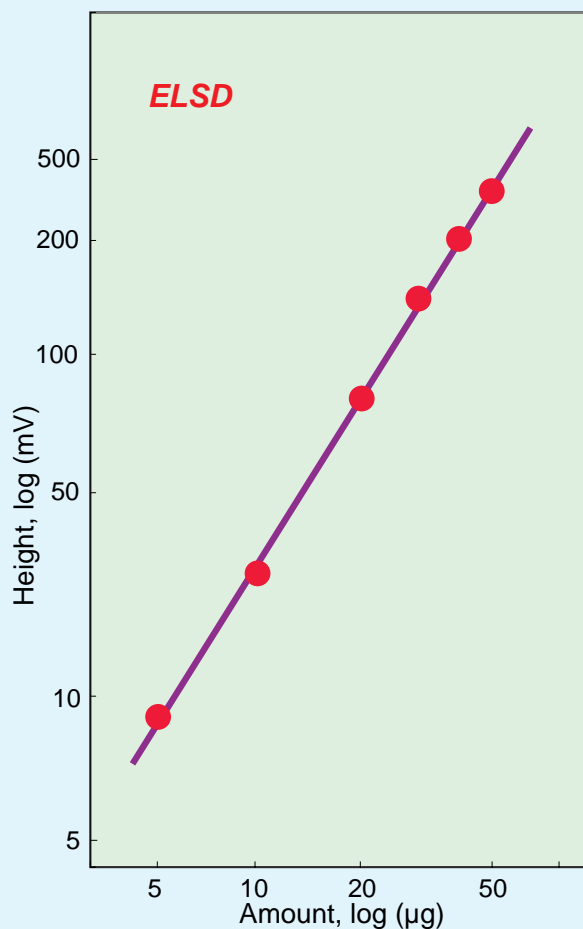
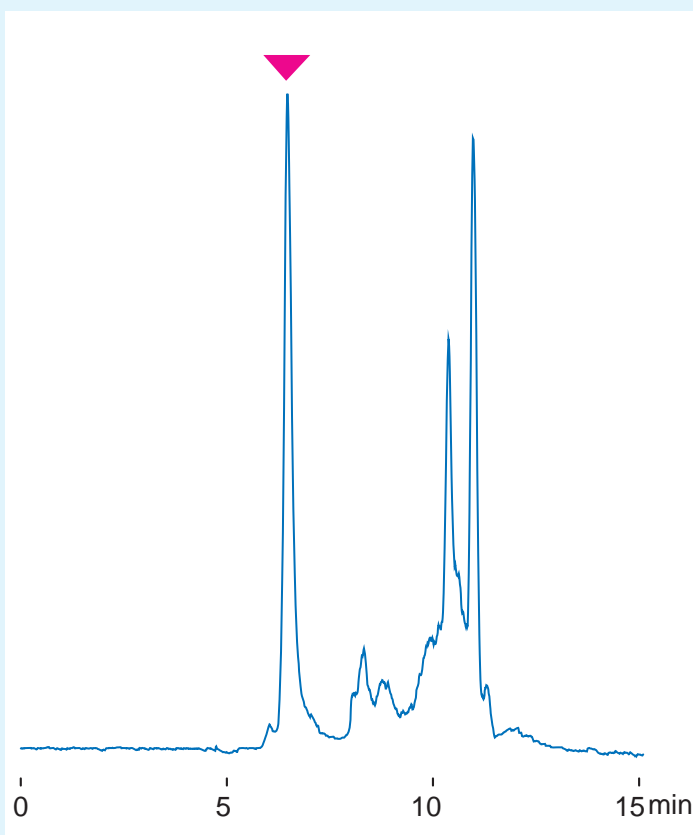
Application

SEC separation: Thyroglobulin (Tg)

サイログロブリン(Tg)のSEC分離

**SEC: Thyroglobulin** **Intrada SEC**

**Thyroglobulin MW 660 kDa**



*Intrada SEC, 250x4.6mm  
 100mM ammonium formate  
 0.3mL/min (5MPa), 37°C  
 ELSD (spray cham. 50°C, drift tube 100°C)  
 5-50 µL (1mg/mL)*