

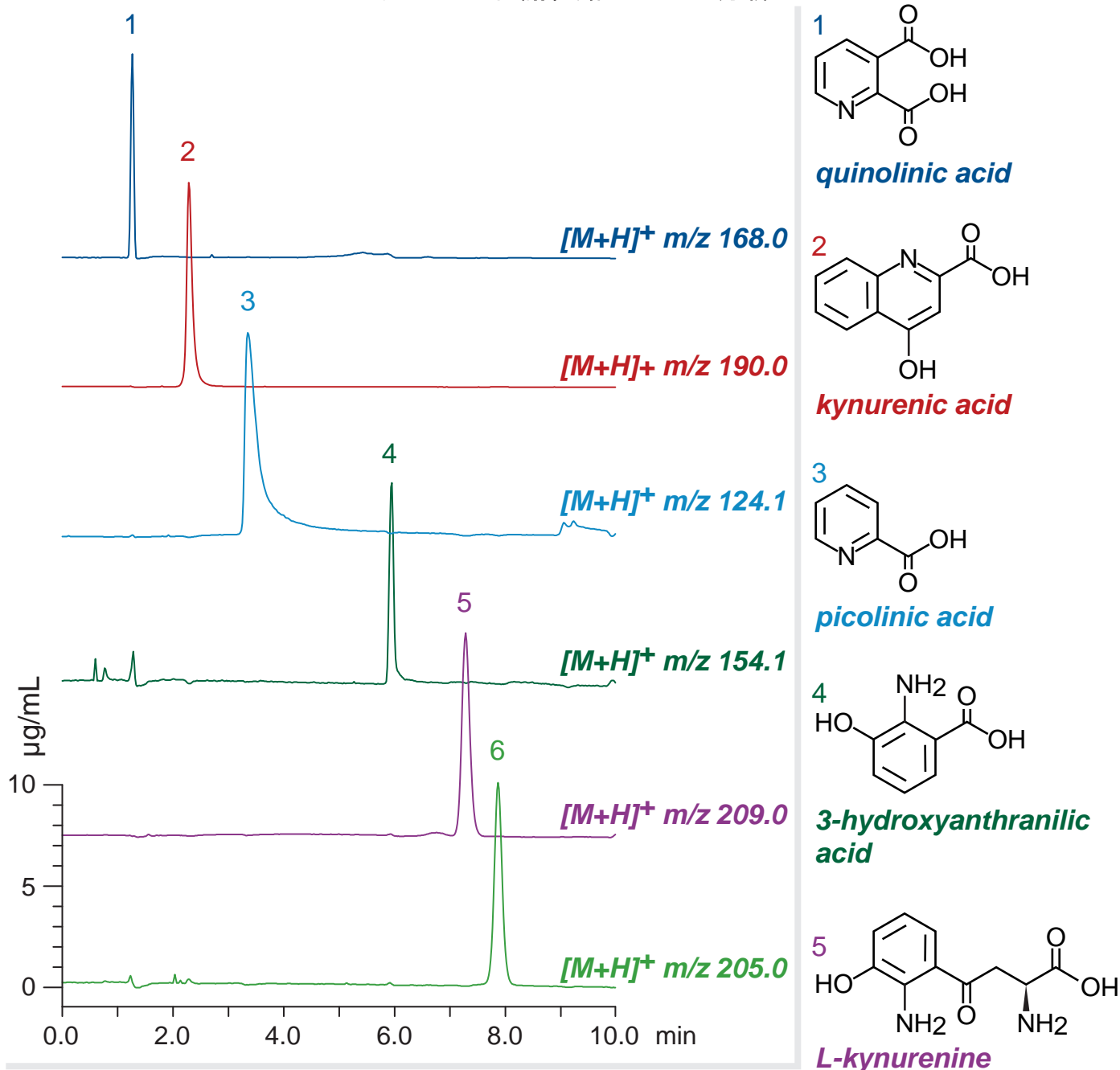
Intrada Amino Acid

100 x 3 mm

Application

LC-MS: Kynurenine metabolism pathway

キヌレニン代謝経路のLC-MS分析



Intrada Amino Acid, 100 x 3 mm

A: methanol / water / formic acid = 60 / 40 / 0.5

B: 100mM ammonium formate

0-100%B (0-10 min)

0.4 mL/min (9 MPa), 37°C, 10 µL (10µg/mL, 1% formic acid)

Single Quad. MS (ESI)

