

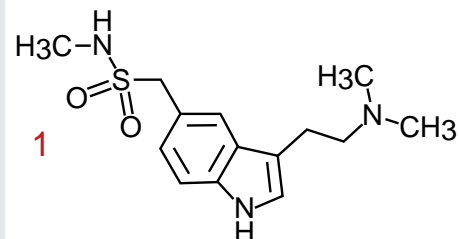
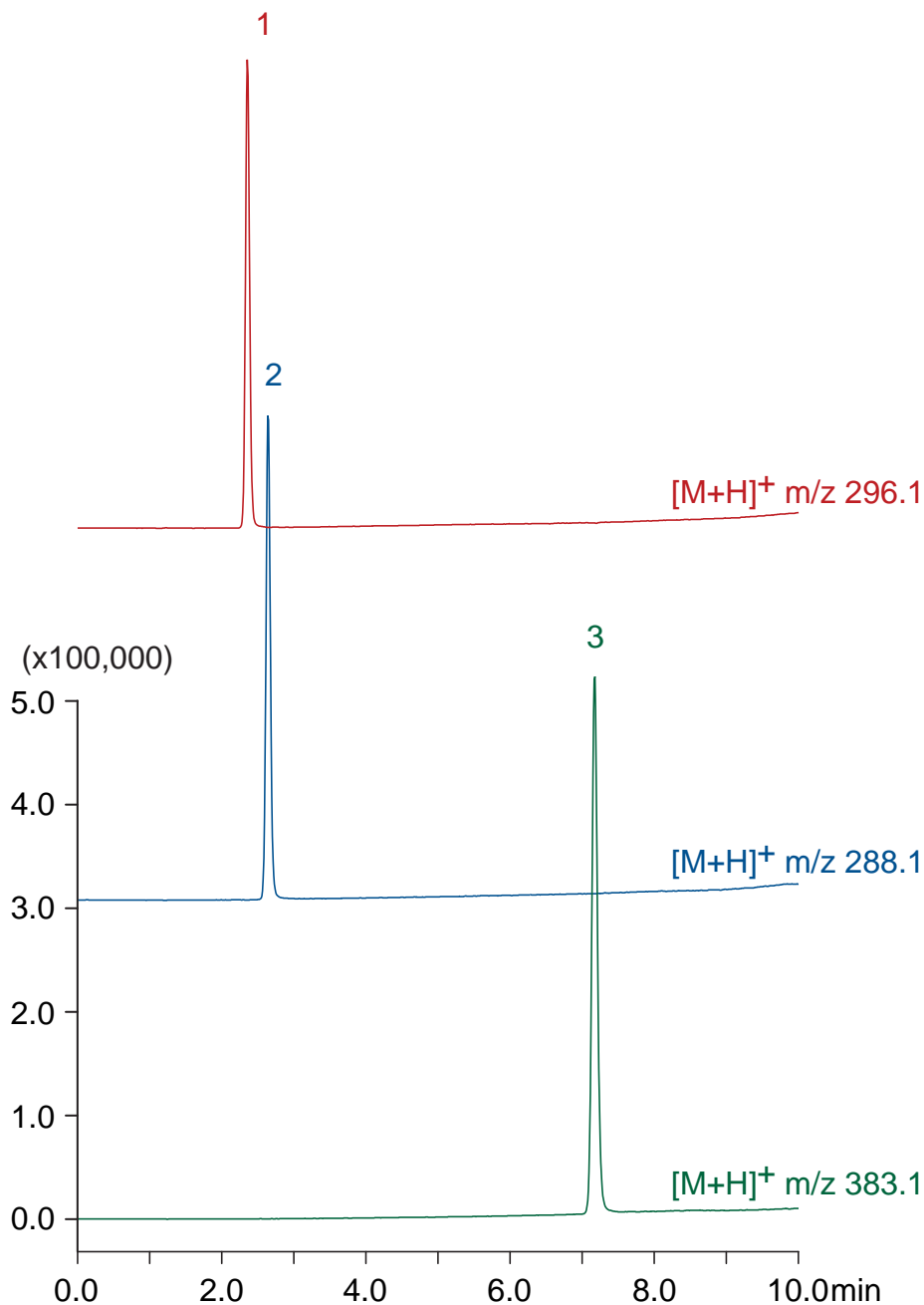
Scherzo SW-C18

100 x 3 mm

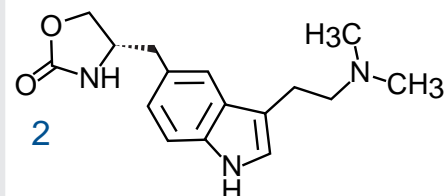
Application

LC-MS: antimigraines (selective serotonin agonists)

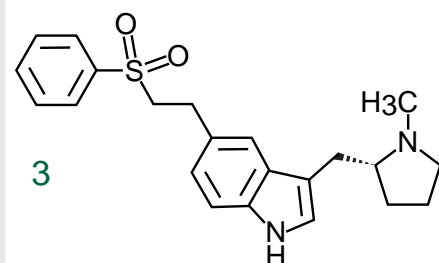
トリプタン系頭痛薬のLC-MS分析



**sumatriptan**



**zolmitriptan**



**eletriptan**

Scherzo SW-C18, 100 x 3 mm

A: methanol / water / formic acid = 20 / 80 / 0.1

B: methanol / 100mM ammonium formate = 60 / 40

30-100 %B (0-8 min), 100 %B (8-10 min)

0.4 mL/min (10 MPa), 37°C, 1 µL (1µg/mL, 0.1% HCOOH)

Single Quad. MS (ESI)