

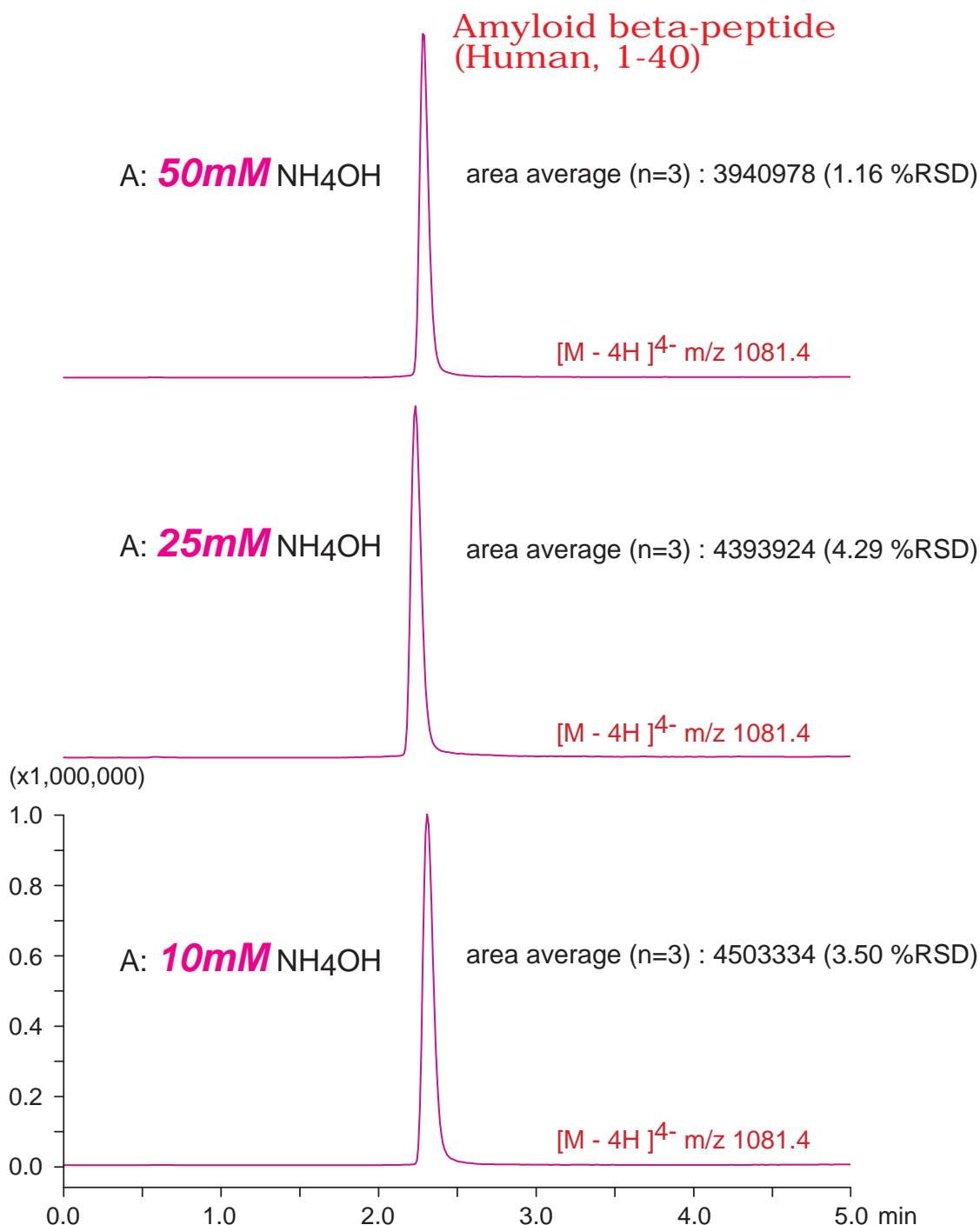
DACAPO DX-C18

50 x 2 mm

Application

LC-MS: Amyloid beta-peptide [Human, 1-40] (alkali conditions)

アミロイド β-ペプチド[Human, 1-40]のLC-MS分析(アルカリ移動相)



DACAPO DX-C18, 50 x 2 mm  
 B: acetonitrile, 0-100 %B (0-5min)  
 0.2 mL/min, 37 °C  
 1 μL (amyloid peptide 10 μg/mL, DMSO), Single Quad. MS (ESI)