

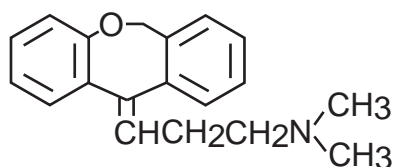
DACAPO DX-C18

50 x 2 mm

Application

LC-MS: Basic compound (mobile phase pH)

塩基性化合物のLC-MS分析 (pHの影響)



doxepine

**A: 25mM NH4OH**

Peak area : 282323

[M + H]<sup>+</sup> m/z 295.2

DACAPO DX-C18, 50 x 2 mm

B: acetonitrile

25-100 %B (0-6min)

0.2 mL/min, 37 °C

4 μL (doxepine 100ng/mL, eluent)

Single Quad. MS (ESI)

**A: 25mM HCOONH4**

Peak area : 450450

[M + H]<sup>+</sup> m/z 295.2

(x 100,000)

**A: 25mM HCOOH**

Peak area : 331465

[M + H]<sup>+</sup> m/z 295.2

0.0 1.0 2.0 3.0 4.0 5.0 6.0 min